

# 28.5 Acre Tract with Interstate Visibility

## 4500 Chambers Road

### Macon, GA 31206



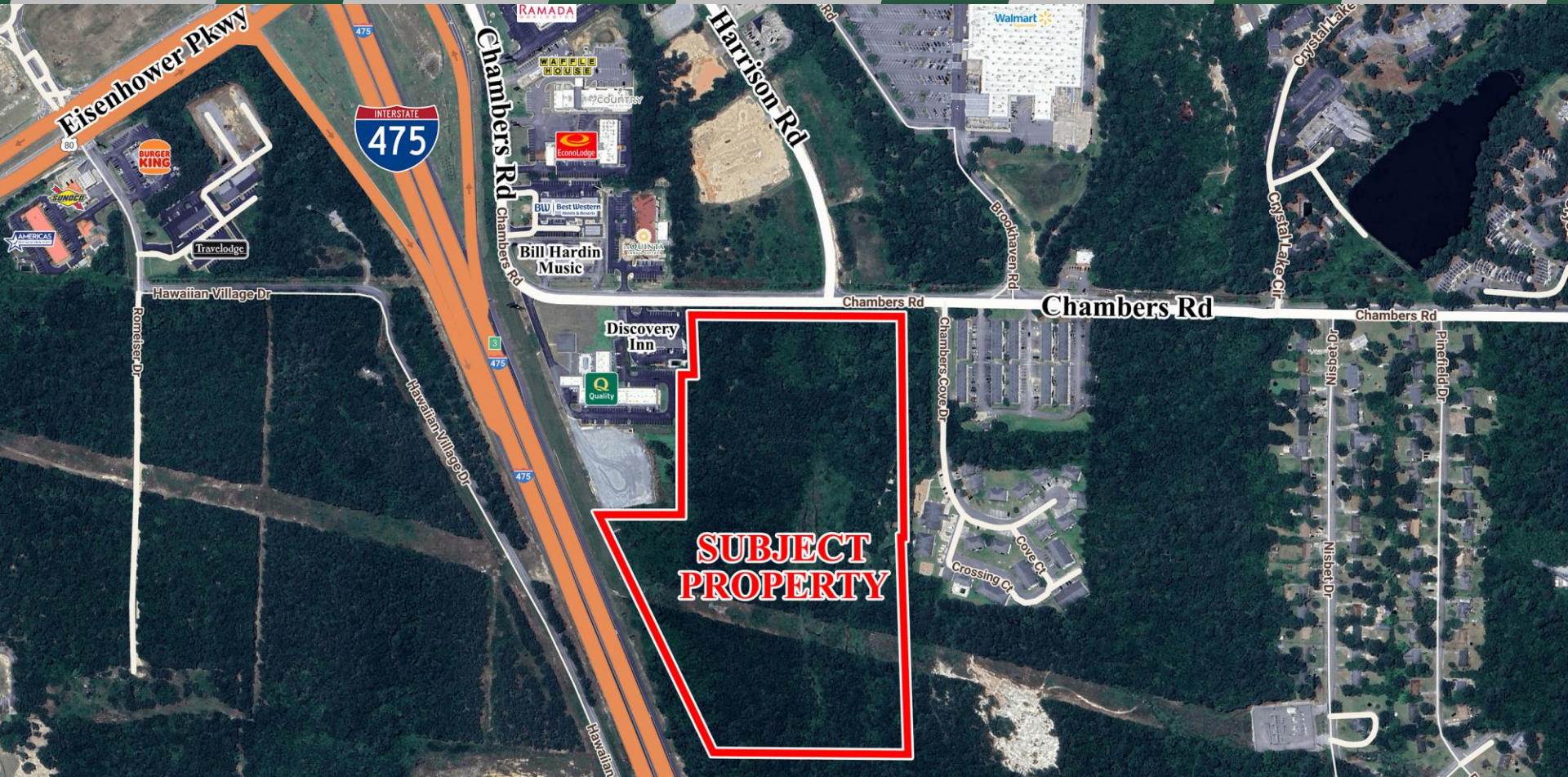
Summary

Area Info

Maps

Macon Info

Agent Info



#### CONTACT

**Jenny Howell, Commercial Sales & Leasing**  
478-746-9421 Office  
786-449-8523 Cell  
[jenny@fickling.com](mailto:jenny@fickling.com)

Licensed in Florida and Georgia  
Also fluent in Spanish and Portuguese



577 Mulberry St, Suite 1100  
Macon, GA 31201  
478.746.9421 Office  
<https://commercial.fickling.com>



28.5 Acre Tract with Interstate Visibility  
4500 Chambers Road  
Macon, GA 31206



Summary	Area Info	Maps	Macon Info	Agent Info
---------	-----------	------	------------	------------

PROPERTY INFORMATION

PROPERTY

**Location:** Chambers Road, with easy access to I-475 (Exit 3) and busy Eisenhower Parkway

**Frontage:** Chambers Road - 725± ft  
I-475 - 920± ft

**Schools:** Veterans Elementary School  
Weaver Middle School  
Westside High School

**Utilities:** Available at or near site

**Taxes:** \$17,859.60 (2024)

**Traffic Count:** Chambers Road – 8,400 VPD  
Eisenhower Parkway – 19,900 VPD  
I-475 – 70,700 VPD

SITE

**Parcel ID:** L091-0094

**County:** Bibb

**Zoning:** [C-4 Highway Commercial District](#)

SALE PRICE:  
\$2,000,000.00

Demographics 2024	3 Miles	5 Miles	10 Miles
Population	29,024	78,519	166,282
Avg HH Income	\$55,076	\$70,324	\$86,659
Median Age	32.8	35.1	37.3

CONTACT

Jenny Howell, Commercial Sales & Leasing


478-746-9421 Office

786-449-8523 Cell

jenny@fickling.com

Licensed in Florida and Georgia

Also fluent in Spanish and Portuguese



577 Mulberry St, Suite 1100  
Macon, GA 31201  
478.746.9421 Office  
<https://commercial.fickling.com>



PROPERTY INFORMATION

DESCRIPTION

28.50 acres of commercially zoned land within a highway commercial district. This site has I-475 visibility, and is a perfect location for retail, recreation, hospitality, multi-family, entertainment, and automobile/boat/truck related businesses, among others. Click [here](#) to access permitted uses and ordinances.

LOCATION HIGHLIGHTS

Easy access to I-475 (Exit 3) and bustling Eisenhower Parkway. A growing area of Macon, this site is located just a short drive from the newly opened 12,000-seat Amphitheater at the Macon Mall, and the world’s largest indoor Pickleball facility, both part of a \$140MM project.

Neighbors in the area include Walmart, Wendy’s, Chick-fil-A, Cook Out, Dollar Tree, Goodwill, Sam’s Club, Middle Georgia State University, Presidential Parkway shopping center, apartment communities, & many other hotels and restaurants.

CONTACT

**Jenny Howell, Commercial Sales & Leasing**  
478-746-9421 Office  
786-449-8523 Cell  
[jenny@fickling.com](mailto:jenny@fickling.com)

Licensed in Florida and Georgia  
Also fluent in Spanish and Portuguese



577 Mulberry St, Suite 1100  
Macon, GA 31201  
478.746.9421 Office  
<https://commercial.fickling.com>



# 28.5 Acre Tract with Interstate Visibility

## 4500 Chambers Road

### Macon, GA 31206



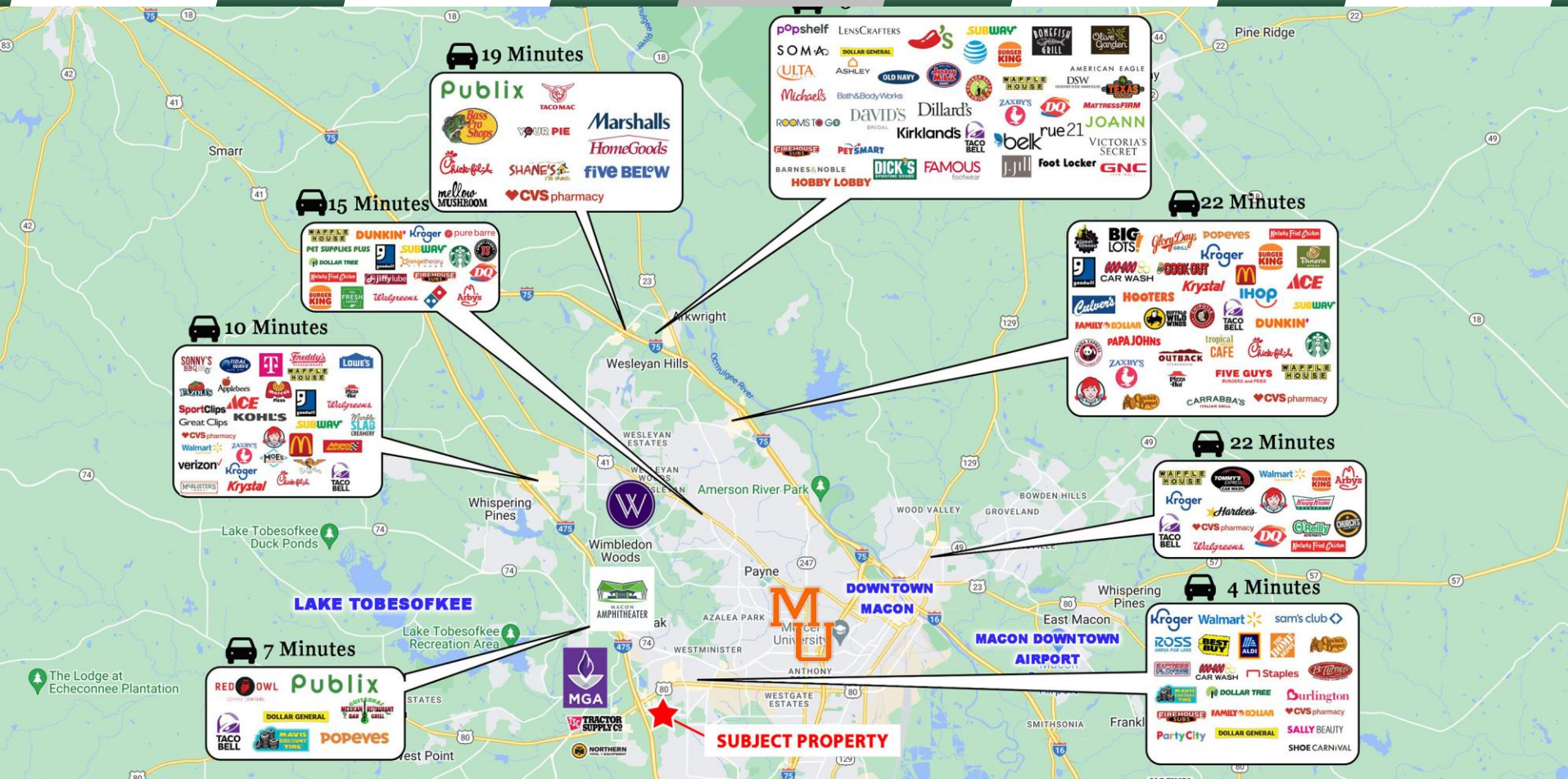
Summary

Area Info

Maps

Macon Info

Agent Info



CONTACT

**Jenny Howell, Commercial Sales & Leasing**  
 478-746-9421 Office  
 786-449-8523 Cell  
[jenny@fickling.com](mailto:jenny@fickling.com)

Licensed in Florida and Georgia  
 Also fluent in Spanish and Portuguese



577 Mulberry St, Suite 1100  
 Macon, GA 31201  
 478.746.9421 Office  
<https://commercial.fickling.com>



# 28.5 Acre Tract with Interstate Visibility

## 4500 Chambers Road

### Macon, GA 31206



Summary

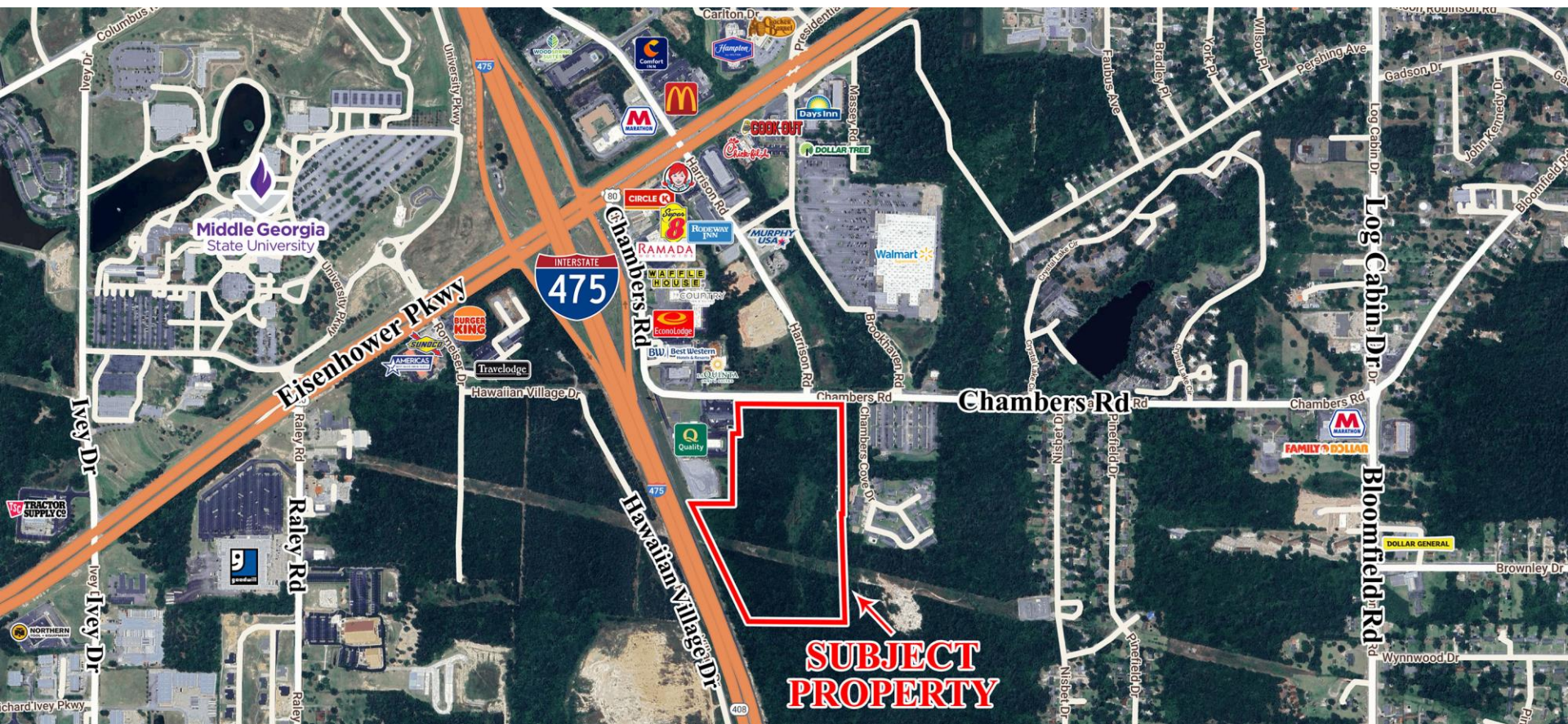
Area Info

Maps

Macon Info

Agent Info

## AERIAL



### CONTACT

**Jenny Howell, Commercial Sales & Leasing**  
478-746-9421 Office  
786-449-8523 Cell  
[jenny@fickling.com](mailto:jenny@fickling.com)

Licensed in Florida and Georgia  
Also fluent in Spanish and Portuguese



577 Mulberry St, Suite 1100  
Macon, GA 31201  
478.746.9421 Office  
<https://commercial.fickling.com>



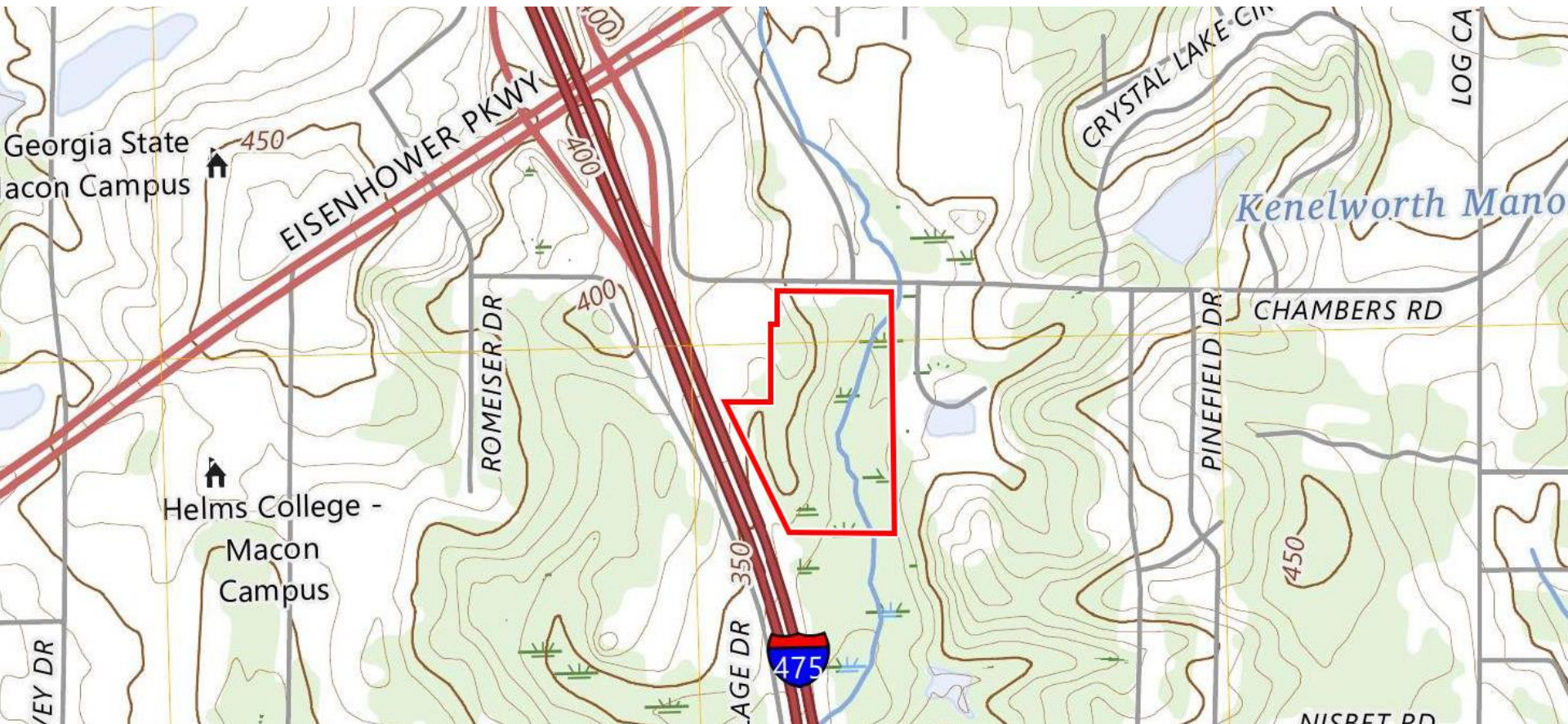
# 28.5 Acre Tract with Interstate Visibility

## 4500 Chambers Road

### Macon, GA 31206

[Summary](#)[Area Info](#)[Maps](#)[Macon Info](#)[Agent Info](#)

## TOPOGRAPHY MAP



### CONTACT

**Jenny Howell, Commercial Sales & Leasing**  
478-746-9421 Office  
786-449-8523 Cell  
[jenny@fickling.com](mailto:jenny@fickling.com)

Licensed in Florida and Georgia  
Also fluent in Spanish and Portuguese



577 Mulberry St, Suite 1100  
Macon, GA 31201  
478.746.9421 Office  
<https://commercial.fickling.com>



# 28.5 Acre Tract with Interstate Visibility

## 4500 Chambers Road

### Macon, GA 31206



Summary

Area Info

Maps

Macon Info

Agent Info

## WATER & SEWER MAP



### CONTACT

**Jenny Howell, Commercial Sales & Leasing**  
478-746-9421 Office  
786-449-8523 Cell  
[jenny@fickling.com](mailto:jenny@fickling.com)

Licensed in Florida and Georgia  
Also fluent in Spanish and Portuguese



577 Mulberry St, Suite 1100  
Macon, GA 31201  
478.746.9421 Office  
<https://commercial.fickling.com>



# 28.5 Acre Tract with Interstate Visibility

## 4500 Chambers Road

### Macon, GA 31206

[Summary](#)[Area Info](#)[Maps](#)[Macon Info](#)[Agent Info](#)

## Macon: A Rapidly Growing Market

Snapshot of some developments on the way:

- Ocmulgee Mounds, poised to become Georgia's first National Park & Preserve, anticipates a surge in visitors from 200,000 to 1.3 million annually, fostering a significant economic boost over \$200MM and the creation of approximately 3,000 jobs.
- The industrial sector has seen a private investment surge of \$2.3 billion since 2017, resulting in over 4 million square feet of new construction, the creation of 3,400 jobs, and the retention of over 1,000 positions.
- The Macon Middle GA Regional Airport is undergoing expansion, featuring a distinctive "guitar-shaped" terminal, set to enhance air travel options and employment opportunities.
- The \$140 million Revitalization of Macon Project, highlighted by the newly inaugurated 12,000-seat Amphitheater, has already drawn crowds with four sold-out concerts since its March 2024 opening.
- Inaugurated on January 1st, 2024, the world's largest indoor Pickle-Ball facility, boasting 32 courts, aims to bolster Sports Tourism and stimulate local commerce. Since it's opening the facility has hosted numerous tournaments with over 2,000 participants from all over the country.



Follow link to the full [Macon presentation!](#)

### CONTACT

**Jenny Howell, Commercial Sales & Leasing**  
478-746-9421 Office  
786-449-8523 Cell  
[jenny@fickling.com](mailto:jenny@fickling.com)

Licensed in Florida and Georgia  
Also fluent in Spanish and Portuguese



577 Mulberry St, Suite 1100  
Macon, GA 31201  
478.746.9421 Office  
<https://commercial.fickling.com>



# 28.5 Acre Tract with Interstate Visibility

## 4500 Chambers Road

### Macon, GA 31206

[Summary](#)[Area Info](#)[Maps](#)[Macon Info](#)[Agent Info](#)

## Macon: A Rapidly Growing Market

Snapshot of some developments on the way:

- Downtown Macon has witnessed a flurry of activity with over \$200 million in new businesses opening in the last 2 years. Additionally, groundbreaking has commenced on projects exceeding \$200 million, introducing residential units, retail spaces, a hotel with a convention center, outdoor event areas, performing arts stages, and parking facilities.
- Collaborative efforts between the Macon-Bibb County Mayor and Tourism Department are underway for the East Bank development, envisioning a mixed-use Coliseum/Arena, Hotel, and Convention Center complex.



Follow link to the full [Macon presentation!](#)

### CONTACT

**Jenny Howell, Commercial Sales & Leasing**  
478-746-9421 Office  
786-449-8523 Cell  
[jenny@fickling.com](mailto:jenny@fickling.com)

Licensed in Florida and Georgia  
Also fluent in Spanish and Portuguese



577 Mulberry St, Suite 1100  
Macon, GA 31201  
478.746.9421 Office  
<https://commercial.fickling.com>



# 28.5 Acre Tract with Interstate Visibility

## 4500 Chambers Road

### Macon, GA 31206

[Summary](#)[Area Info](#)[Maps](#)[Macon Info](#)[Agent Info](#)

## New Developments + Developments On The Way

Links to articles about all the exciting developments in Macon, GA :

- [Travel + Leisure : The 50 Best Places to Travel - Ocmulgee Mounds National Historical Park](#)
- [Middle Georgia Regional Airport - Guitar-Shaped Airport](#)
- [Interactive Gold Driving Range + Pickleball Courts Planned for Downtown Macon Venue](#)
- [\\$130 Million Dollar Project, Expanded Business Improvement District Boost Downtown](#)
- [Opening of Atrium Health Amphitheater- Local Businesses Preparing](#)
- [World's Largest Indoor Pickleball Facility Opens in Macon](#)
- [Bibb Commissioners Approve East Bank Development](#)

Follow link to the full [Macon presentation!](#)



### CONTACT

**Jenny Howell, Commercial Sales & Leasing**  
478-746-9421 Office  
786-449-8523 Cell  
[jenny@fickling.com](mailto:jenny@fickling.com)

Licensed in Florida and Georgia  
Also fluent in Spanish and Portuguese



577 Mulberry St, Suite 1100  
Macon, GA 31201  
478.746.9421 Office  
<https://commercial.fickling.com>



**28.5 Acre Tract with Interstate Visibility**  
**4500 Chambers Road**  
**Macon, GA 31206**



Summary

Area Info

Maps

Macon Info

Agent Info

## HIGHER EDUCATION



**MERCER**  
UNIVERSITY



CENTRAL GEORGIA  
**cgtc**  
TECHNICAL COLLEGE



 **Middle Georgia**  
State University



 *First for Women*  
**WESLEYAN**

### CONTACT

**Jenny Howell, Commercial Sales & Leasing**  
478-746-9421 Office  
786-449-8523 Cell  
jenny@fickling.com

Licensed in Florida and Georgia  
Also fluent in Spanish and Portuguese



577 Mulberry St, Suite 1100  
Macon, GA 31201  
478.746.9421 Office  
<https://commercial.fickling.com>



## AGENT INFORMATION



Fickling & Company, Inc. has been setting the standards for Real Estate Services in southeastern secondary markets since its founding in 1939 as Fickling & Walker, Inc. Fickling & Company, Inc. is a full-service real estate and development firm headquartered in Macon, GA.

Fickling & Company provides professional commercial real estate consulting to both buyers and sellers, commercial property sales, and commercial property leasing and property management - all under one roof. The Company's heritage includes the development of more than one hundred subdivisions and apartment communities in Middle Georgia, as well as, the countless commercial developments throughout the Southeast.

Our licensed Commercial Sales and Leasing Agents are the experts in this industry and combined have over 100 years' experience in the commercial real estate business.

### **Presented by: Jenny Howell**

Licensed in Florida and Georgia

Fluent in English, Spanish & Portuguese

Jenny brings over 20 years of experience in Sales & Marketing Strategy, including 17 years in Luxury Hospitality, where she led a Sales Team in a Resort that generated \$400+ Million Dollar annually.

A skillful negotiator and outstanding customer relations expert, Jenny became a multi-million-dollar producer within a few months of relocating to Georgia from Miami Beach. Her database includes over 2,500+ key business drivers and entrepreneurs from around the world.

Committed to delivering the highest level of expertise, Jenny is currently seeking the CCIM designation. Certified Commercial Investment Members (CCIM's) are the most advanced investment specialists anywhere.

### **CONTACT**

#### **Jenny Howell, Commercial Sales & Leasing**

478-746-9421 Office

786-449-8523 Cell

[jenny@fickling.com](mailto:jenny@fickling.com)

Licensed in Florida and Georgia

Also fluent in Spanish and Portuguese



577 Mulberry St, Suite 1100

Macon, GA 31201

478.746.9421 Office

<https://commercial.fickling.com>