

TRACT NO.	ACRES	STATUS
1	36,120	RESERVED
2	36,120	RESERVED
3	36,120	RESERVED
4	36,120	RESERVED
5	36,120	RESERVED
6	36,120	RESERVED
7	36,120	RESERVED
8	36,120	RESERVED
9	36,120	RESERVED
10	36,120	RESERVED
11	36,120	RESERVED
12	36,120	RESERVED
13	36,120	RESERVED
14	36,120	RESERVED
15	36,120	RESERVED
16	36,120	RESERVED
17	36,120	RESERVED
18	36,120	RESERVED
19	36,120	RESERVED
20	36,120	RESERVED
21	36,120	RESERVED
22	36,120	RESERVED
23	36,120	RESERVED
24	36,120	RESERVED
25	36,120	RESERVED
26	36,120	RESERVED
27	36,120	RESERVED
28	36,120	RESERVED
29	36,120	RESERVED
30	36,120	RESERVED
31	36,120	RESERVED
32	36,120	RESERVED
33	36,120	RESERVED
34	36,120	RESERVED
35	36,120	RESERVED
36	36,120	RESERVED
37	36,120	RESERVED
38	36,120	RESERVED
39	36,120	RESERVED
40	36,120	RESERVED
41	36,120	RESERVED
42	36,120	RESERVED
43	36,120	RESERVED
44	36,120	RESERVED
45	36,120	RESERVED
46	36,120	RESERVED
47	36,120	RESERVED
48	36,120	RESERVED
49	36,120	RESERVED
50	36,120	RESERVED
51	36,120	RESERVED
52	36,120	RESERVED
53	36,120	RESERVED
54	36,120	RESERVED
55	36,120	RESERVED
56	36,120	RESERVED
57	36,120	RESERVED
58	36,120	RESERVED
59	36,120	RESERVED
60	36,120	RESERVED
61	36,120	RESERVED
62	36,120	RESERVED
63	36,120	RESERVED
64	36,120	RESERVED
65	36,120	RESERVED
66	36,120	RESERVED
67	36,120	RESERVED
68	36,120	RESERVED
69	36,120	RESERVED
70	36,120	RESERVED
71	36,120	RESERVED
72	36,120	RESERVED
73	36,120	RESERVED
74	36,120	RESERVED
75	36,120	RESERVED
76	36,120	RESERVED
77	36,120	RESERVED
78	36,120	RESERVED
79	36,120	RESERVED
80	36,120	RESERVED
81	36,120	RESERVED
82	36,120	RESERVED
83	36,120	RESERVED
84	36,120	RESERVED
85	36,120	RESERVED
86	36,120	RESERVED
87	36,120	RESERVED
88	36,120	RESERVED
89	36,120	RESERVED
90	36,120	RESERVED
91	36,120	RESERVED
92	36,120	RESERVED
93	36,120	RESERVED
94	36,120	RESERVED
95	36,120	RESERVED
96	36,120	RESERVED
97	36,120	RESERVED
98	36,120	RESERVED
99	36,120	RESERVED
100	36,120	RESERVED
101	36,120	RESERVED

**LARAMIE RIVER RANCH - PHASE 2
RECORD OF SURVEY NO.**

101 TRACTS OF LAND BEING ALL OF SECTIONS 17 AND 19, AND PORTIONS OF SECTIONS 5, 8, 20, 21, AND 30 TOWNSHIP 22 NORTH, RANGE 78 WEST OF THE SIXTH PRINCIPAL MERIDIAN, AND ALL OF SECTION 33 AND PORTIONS OF SECTIONS 24, 25, AND 28 TOWNSHIP 22 NORTH, RANGE 74 WEST OF THE SIXTH PRINCIPAL MERIDIAN ALBANY COUNTY, WYOMING

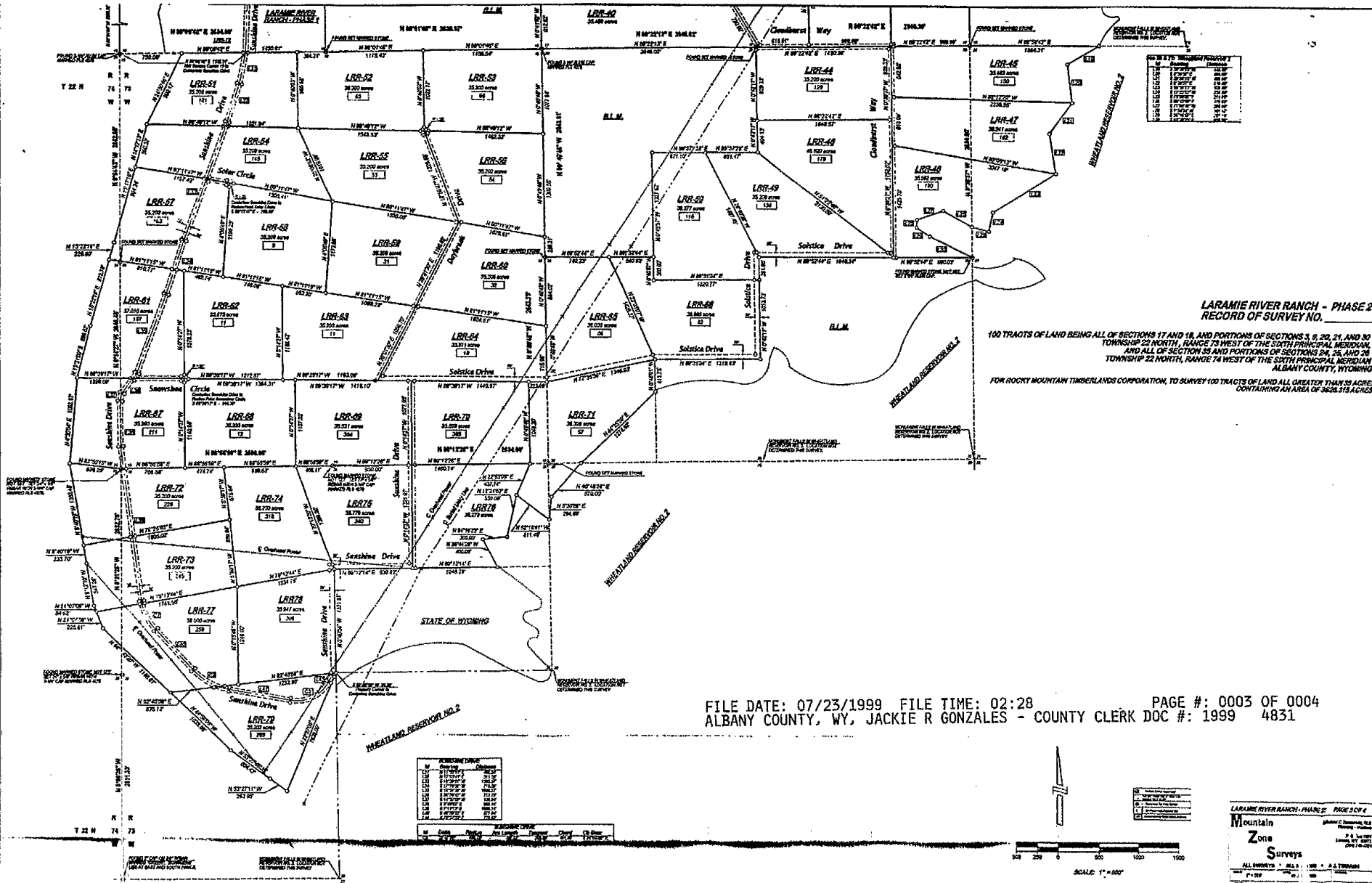
FOR ROCKY MOUNTAIN TIMBERLANDS CORPORATION, TO SURVEY 100 TRACTS OF LAND ALL GREATER THAN 35 ACRES, CONTAINING AN AREA OF 3624.515 ACRES.

FILE DATE: 07/23/1999 FILE TIME: 02:28 PAGE #: 0002 OF 0004
ALBANY COUNTY, WY, JACKIE R GONZALES - COUNTY CLERK DOC #: 1999 4831



1	As Shown
2	As Shown
3	As Shown
4	As Shown
5	As Shown
6	As Shown
7	As Shown
8	As Shown
9	As Shown
10	As Shown
11	As Shown
12	As Shown
13	As Shown
14	As Shown
15	As Shown
16	As Shown
17	As Shown
18	As Shown
19	As Shown
20	As Shown
21	As Shown
22	As Shown
23	As Shown
24	As Shown
25	As Shown
26	As Shown
27	As Shown
28	As Shown
29	As Shown
30	As Shown
31	As Shown
32	As Shown
33	As Shown
34	As Shown
35	As Shown
36	As Shown
37	As Shown
38	As Shown
39	As Shown
40	As Shown
41	As Shown
42	As Shown
43	As Shown
44	As Shown
45	As Shown
46	As Shown
47	As Shown
48	As Shown
49	As Shown
50	As Shown
51	As Shown
52	As Shown
53	As Shown
54	As Shown
55	As Shown
56	As Shown
57	As Shown
58	As Shown
59	As Shown
60	As Shown
61	As Shown
62	As Shown
63	As Shown
64	As Shown
65	As Shown
66	As Shown
67	As Shown
68	As Shown
69	As Shown
70	As Shown
71	As Shown
72	As Shown
73	As Shown
74	As Shown
75	As Shown
76	As Shown
77	As Shown
78	As Shown
79	As Shown
80	As Shown
81	As Shown
82	As Shown
83	As Shown
84	As Shown
85	As Shown
86	As Shown
87	As Shown
88	As Shown
89	As Shown
90	As Shown
91	As Shown
92	As Shown
93	As Shown
94	As Shown
95	As Shown
96	As Shown
97	As Shown
98	As Shown
99	As Shown
100	As Shown
101	As Shown

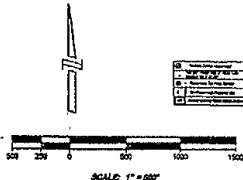
LARAMIE RIVER RANCH - PHASE 2 PAGE 2 OF 4
Mountain
Zone
Surveys



**LARAMIE RIVER RANCH - PHASE 2
RECORD OF SURVEY NO.**

100 TRACTS OF LAND BEING ALL OF SECTIONS 17 AND 18, AND PORTIONS OF SECTIONS 3, 6, 20, 21, AND 30
TOWNSHIP 22 NORTH, RANGE 74 WEST OF THE SIXTH PRINCIPAL MERIDIAN,
AND ALL OF SECTION 35 AND PORTIONS OF SECTIONS 34, 26, AND 28
TOWNSHIP 22 NORTH, RANGE 74 WEST OF THE SIXTH PRINCIPAL MERIDIAN
ALBANY COUNTY, WYOMING
FOR ROCKY MOUNTAIN TIMBERLANDS CORPORATION, TO SURVEY 100 TRACTS OF LAND ALL GREATER THAN 25 ACRES
CONTAINING AN AREA OF 3628.313 ACRES

FILE DATE: 07/23/1999 FILE TIME: 02:28 PAGE #: 0003 OF 0004
ALBANY COUNTY, WY, JACKIE R GONZALES - COUNTY CLERK DOC #: 1999 4831

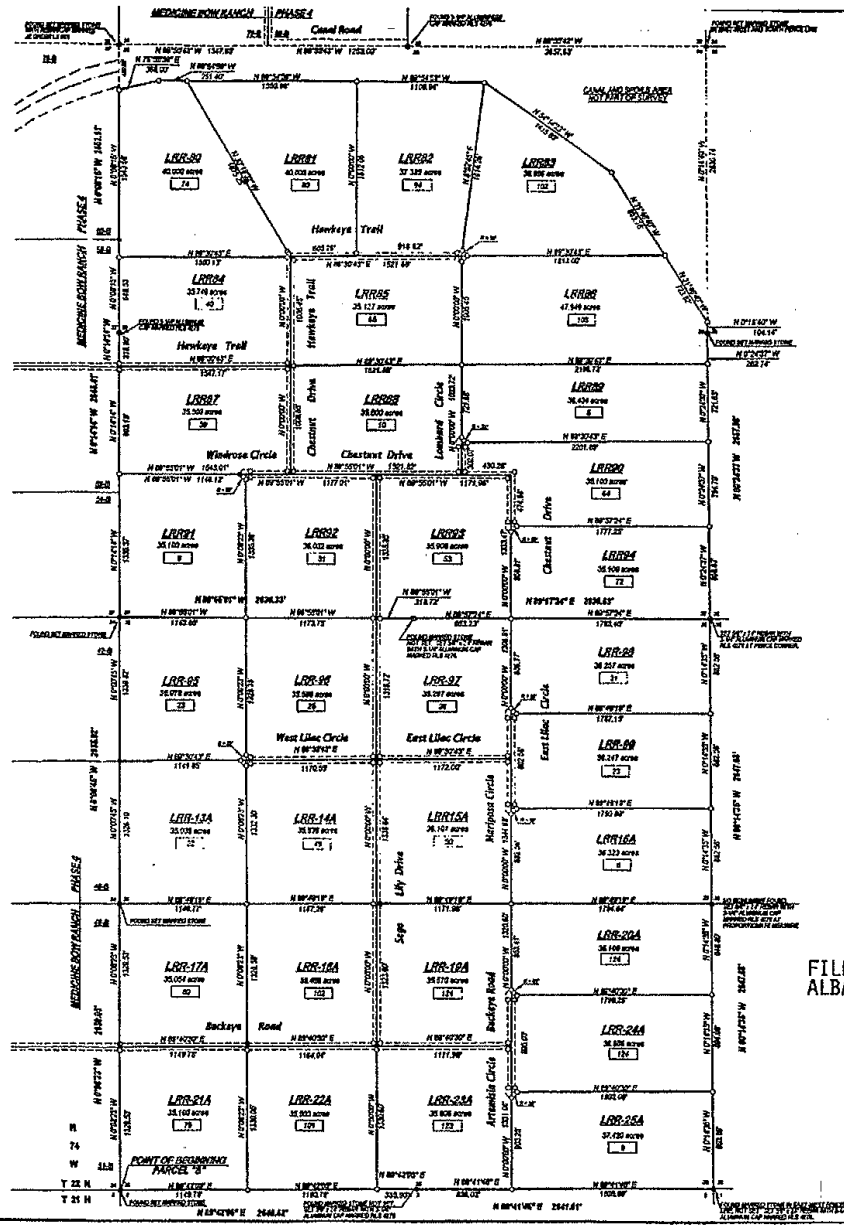


LARAMIE RIVER RANCH - PHASE 2
Mountain
Zone
Surveys
ALL SURVEYS - ALL 100 - ALL THROUGH
P. & S. SURVEYING
LARAMIE, WY 82001

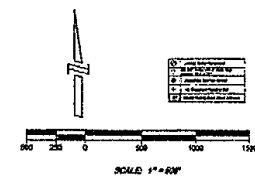
SYMBOLS	
[Symbol]	Boundary
[Symbol]	Survey Line
[Symbol]	Section Line
[Symbol]	Water
[Symbol]	Other

LARAMIE RIVER RANCH - PHASE 2
RECORD OF SURVEY NO.

100 TRACTS OF LAND BEING ALL OF SECTIONS 17 AND 18, AND PORTIONS OF SECTIONS 3, 9, 20, 21, AND 30
 TOWNSHIP 22 NORTH, RANGE 73 WEST OF THE SIXTH PRINCIPAL MERIDIAN,
 AND ALL OF SECTION 35 AND PORTIONS OF SECTIONS 24, 25, AND 28
 TOWNSHIP 22 NORTH, RANGE 74 WEST OF THE SIXTH PRINCIPAL MERIDIAN
 ALBANY COUNTY, WYOMING
 FOR ROCKY MOUNTAIN TIMBERLANDS CORPORATION, TO SURVEY 100 TRACTS OF LAND ALL GREATER THAN 35 ACRES
 CONTAINING AN AREA OF 3628.315 ACRES.



FILE DATE: 07/23/1999 FILE TIME: 02:28 PAGE #: 0004 OF 0004
 ALBANY COUNTY, WY, JACKIE R GONZALES - COUNTY CLERK DOC #: 1999 4831



LARAMIE RIVER RANCH - PHASE 2 PAGE 4 OF 4	
Mountain	Survey
Zone	Surveys
ALL SURVEYS • ALL SEARCH • ALL TOWNSHIP	