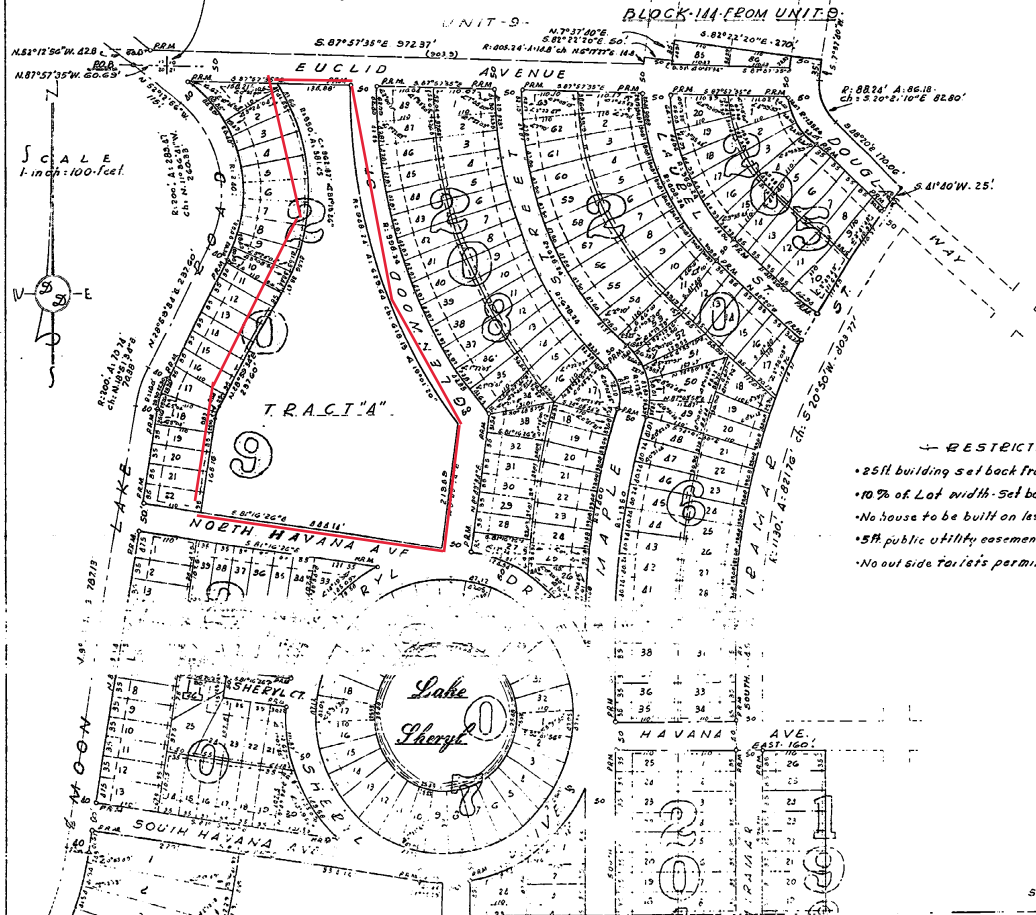


MOON LAKE ESTATES

UNIT TWELVE

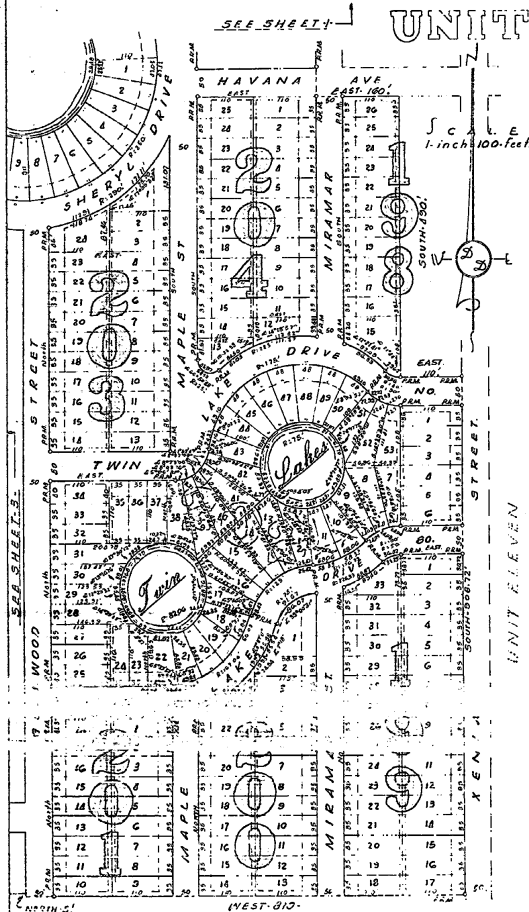
BEING A SUBDIVISION OF A PORTION OF SECTIONS 16-17-20 AND 21 TOWNSHIP 25S, RANGE 17E, PASCO COUNTY, FLORIDA.



- RESTRICTIONS
- 25 ft building set back from front line.
 - 10% of Lot width Set back from side line.
 - No house to be built on less than 2 lots.
 - 5 ft public utility easement at rear of lots.
 - No out side Porch's permitted.

MOON LAKE ESTATES

UNIT TWELVE



AND BEING FURTHER DESCRIBED AS: From the common corner for Sections 16, 17, 20 and 21, Township 25 S., Range 17 E., Pasco County, Florida, run N. 87° 57' 36" W. along the Section line 60.69 ft. for a point of beginning. Run thence N. 52° 19' 55" W. 120.0 ft., thence S. 89° 57' 36" E. 97.31 ft., thence by a curve to the right, Radius 105.24 ft. A: 14.6 ft. ch. N. 6° 17' 22" E. 14.6 ft., thence by the following 3 courses along a south line of Moon Lake Estates, Unit 8, as recorded in plot book 4, page 102, Pasco County Records, run S. 82° 12' 30" E. 50. ft., thence N. 7° 37' 40" E. 35. ft., thence S. 82° 12' 30" E. 270. ft., thence S. 7° 37' 40" W. 35. ft., thence by a curve to the left, Radius 68.24 ft. A: 86.18 ft. ch. S. 70° 21' 10" E. 86.0 ft., thence S. 8° 10' E. 170.00 ft., thence by the following 7 courses along the westerly boundaries of Moon Lake Estates, Unit 11, as recorded in plot book 5, page 144, Pasco County Records, run S. 41° 40' W. 25. ft., thence by a curve to the left, Radius 110.0 ft. A: 82.17 ft. ch. S. 20° 50' W. 80.37 ft., thence South 212.55 ft., thence East 160.0 ft., thence South 400. ft., thence East 100. ft., thence South 508.72 ft., thence West 810. ft., thence North 5. ft., thence West 238.2 ft., thence by a curve to the right, Radius 270. ft. A: 152.51 ft. ch. N. 75° 43' 06" W. 150.45 ft., thence N. 57° 36' 14" W. 100. ft., thence S. 27° 21' 39" W. 160. ft., thence N. 57° 38' 10" W. 542.15 ft., thence by a curve to the left, Radius 1150. ft. A: 182.76 ft. ch. S. 12° 26' 32" W. 262.10 ft., thence N. 64° 21' 54" W. 310. ft., thence by a curve to the right, Radius 1500. ft. A: 633.75 ft. ch. N. 18° 52' 51" E. 693.42 ft., thence N. 32° 12' 35" E. 125.5 ft., thence by a curve to the left, Radius 500. ft. A: 206.58 ft. ch. N. 20° 32' 42" E. 204.81 ft., thence N. 8° 43' 34" E. 767.13 ft., thence by a curve to the right, Radius 200. ft. A: 70.74 ft. ch. N. 18° 57' 34" E. 70.36 ft., thence N. 28° 59' 34" E. 237.60 ft., thence by a curve to the left, Radius 200. ft. A: 288.17 ft. ch. N. 17° 36' 41" W. 240.93 ft., thence N. 52° 12' 36" W. 115. ft. to the point of beginning.

DEDICATION: The undersigned hereby certifies that it is the owner of the above described Tract of Land hereby platted as "MOON LAKE ESTATES - UNIT TWELVE", and that it dedicates to the public all streets and public places shown on this plat of the subdivision of said lands.

MOON LAKE DEVELOPMENT CORPORATION

STATE OF FLORIDA
I hereby certify that on this 5th day of June, A.D. 1952 before me personally appeared DAVID SLOPES and CLARENCE HARRIS, respectively President and ASST. Secretary of MOON LAKE DEVELOPMENT CORPORATION, a corporation under the laws of the State of Florida, to me known to be the persons described in and who executed the foregoing plat, and that they acknowledged to me that they executed the same for the purposes therein expressed and that they affixed thereto the official seal of said corporation, and the said instrument is the act and deed of said corporation, in and to me and my official seal of St. Petersburg, the County of Pinellas, the State of Florida, this day and year aforesaid.



Helen C. Andrews
Notary Public, State of Florida of First

My Comm. Expires, July 19, 1953

SHEET 2 OF 3