

Introductory Page: Tattnall Air Force Space Surveillance Station

Project Number: HP-221019-011

Resource Description:

The Tattnall Space Surveillance Station was constructed in 1987 and owned by the Navy until command was passed to the Air Force in 2004. The Air Force eventually deactivated the Tattnall Space Surveillance Station in 2013. Prior to being deactivated, the facility was a low-altitude receiving station used to track orbital objects.

The facility consists of 101.7 acres in Tattnall County Georgia with seven architecturally nondescript improvements including a central operations building, several support buildings and structures, and twelve antenna arrays.

Each of the 400-foot-long arrays contains 96 dipole elements mounted on a steel framework above a groundscreen. The groundscreen is a 13-foot wide plane of parallel horizontal wires that sits approximately six feet above the ground. The antennas have a steel framework set in concrete footings. A small shed at the center of each array, called a preamp house, contains electrical and mechanical equipment related to the operation of the antenna.

The operations building is rectangular in plan with shed additions on the west and north facades. Construction consists of a concrete slab-on-grade foundation and concrete masonry unit (CMU) load-bearing walls. The shallow-pitched shed roof is supported by steel trusses and is covered with built-up roofing. The building has five exterior entrances: a pair of flush metal doors with vision panels on the east facade; two single flush metal doors on the east facade; and two single flush metal doors on the west facade. Windows are fixed aluminum sash with double-pane glazing. The CMU walls are painted on the exterior and interior. Interior finishes for this building include vinyl composition tile and polished concrete flooring, exposed concrete block walls with drywall partitions, and suspended acoustical tile ceiling. Interior spaces of this building include an operations room, offices, and supply rooms. A screen room, which contains electrical equipment, is enclosed with metal walls.

The maintenance shop is northeast of the operations building. The one-story, utilitarian building is rectangular in plan and has a vehicle shelter addition on its south facade. It has a concrete slab-on-grade foundation and metal frame wall construction. The shallow-pitched shed roof is covered with ribbed steel panels, as are the walls.

The flammable/hazardous material storage building is south of the operations building. The one-story building is rectangular in plan and has a concrete slab-on-grade foundation. Walls are of metal-frame construction with box-ribbed metal siding. The shed roof is covered with metal roofing.

The field station's water pumping and storage facility is situated to the west of the operations building, the facility consists of a steel tank flanked by pumphouses. The one-story pumphouses rest on concrete slab-on-grade foundations and have wood-frame walls covered with vinyl siding over plywood sheathing. Both buildings have shed roofs covered with composition roofing.

The only other extant resource is a 30-foot-tall metal flagpole, which is southeast of the operations building.

Improvement Name	Date
Operations Building	1987
Antenna Array 1-12	1987
Preamplifier House 1-12	1987
Flagpole, Sign	1987
Maintenance Shop	1987
Hazardous/Flammable Materials Storage	1987
Water Treatment Facility	1987

The Tattall Space Surveillance Station field station was deemed eligible for the National Register of Historic Places (June 19, 2001) and falls under both Criterion A in the area of military and Criteria Consideration G for its exceptional significance associated with the Cold War. The Tattall Space Surveillance Station, originally affiliated with U.S. Naval Space Command, was part of an integrated radar satellite detection/tracking system that the Department of the Navy constructed soon after the Soviet Union launched the first Sputnik satellite on October 4th, 1957. Besides representing the beginning of the Space Race, Sputnik I sparked an enormous effort by the U.S. to make progress in the missile and space technology fields. Once the first few stations became fully operational in 1958, the satellite tracking system fulfilled its primary mission. Subsequent technological advances further enhanced the network's capabilities and hence its contributions to the Cold War. Improvements such as the installation of more powerful computers and antennas enabled Naval Space Command personnel to observe and monitor the progress of the largely secret Soviet space program.

The Tattall field station was constructed in 1987 to replace the Fort Stewart station, the first receiving field station in the system, after Naval Space Command relocated due to conflict stemming from the Army and ordnance training at Fort Stewart. Like the original Fort Stewart field station, Tattall's antenna arrays tracked space objects in low-altitude orbits. Although the

original antennas on the property were dismantled and replaced with more powerful units, the arrays nonetheless represent the most important component of this and the other receiving field stations. The Air Force placed the Tattnall Space Surveillance Station in cold storage in April 2013 along with the Silver Lake Station.

Geographic Location

Property Name: Tattnall Air Force Space Surveillance Station

Location: Glennville vicinity,
Tattnall County, Georgia
Easting: 412573.80, Northing: 3545653.61, Zone: 17S

Mailing Address: At one time, this property had an address of 591 Naval Base Rd.
Glennville, GA 30427-0188; however, that address is not recognized in any GIS system.

USGS Quad Name: Dean's Crossing, GA, 7.5-minute quadrangle

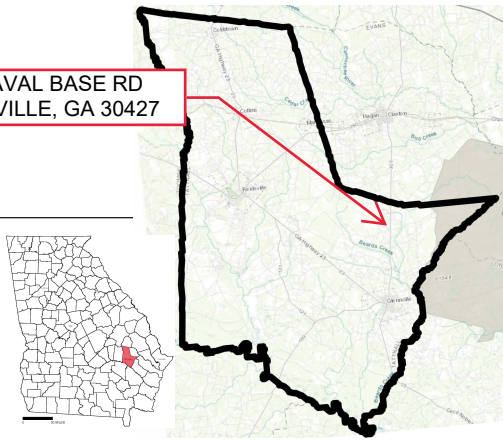
General Location Information:

The Tattnall Naval Space Surveillance Field Station sits on a 101.72-acre site approximately 60 miles west of Savannah, in Tattnall County, Georgia. The rural site is level and is covered with short grass. Woods and uncultivated land border the site on the north and south, to the east are cultivated fields, and to the west is a pine plantation. A graded dirt driveway leads west from Tattnall County Road 425 to the field station's operations building. The complex consists of a central operations building, several support buildings and structures, and twelve antenna arrays.

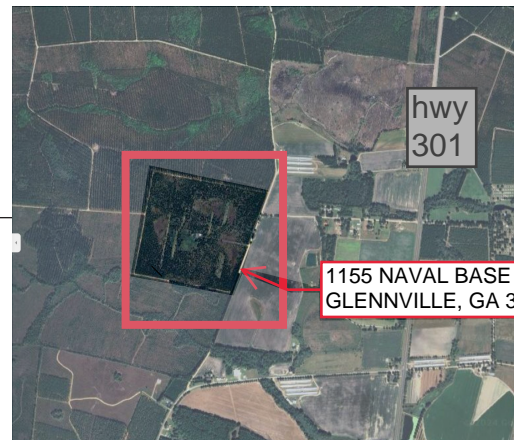
Reference List:

- Air Force Space Command Public Affairs. (2013, August 13). *Air Force Space Command to discontinue space surveillance system*. U.S. Air Force. <https://www.af.mil/News/Article-Display/Article/466832/air-force-space-command-to-discontinue-space-surveillance-system/>
- McCall, R.E. (2013, April 18). Tattnall Space Surveillance Station shut down due to sequestration. *The Tattnall Journal*.
https://web.archive.org/web/20140718204848/http://tattnalljournal.com/archives/041813_20pgs.pdf
- Moore, D.J., Eisenhour, T.P., Mitchell, R.E., Gotcher, L.A., Ross, J.R., Kibler, K.W., & Fields, R.C. (2002, April). *Historic Resources Survey and Assessment of Nine Naval Space Surveillance Field Stations*. (Contract No. N62467-98-D-0994 Delivery Order 006). U.S. Department of the Navy. Southern Division, Naval Facilities Engineering Command.
- National Park Service. *How to Apply the National Register Criteria for Evaluation*. U.S. Department of the Interior. https://www.nps.gov/subjects/nationalregister/upload/NRB-15_web508.pdf

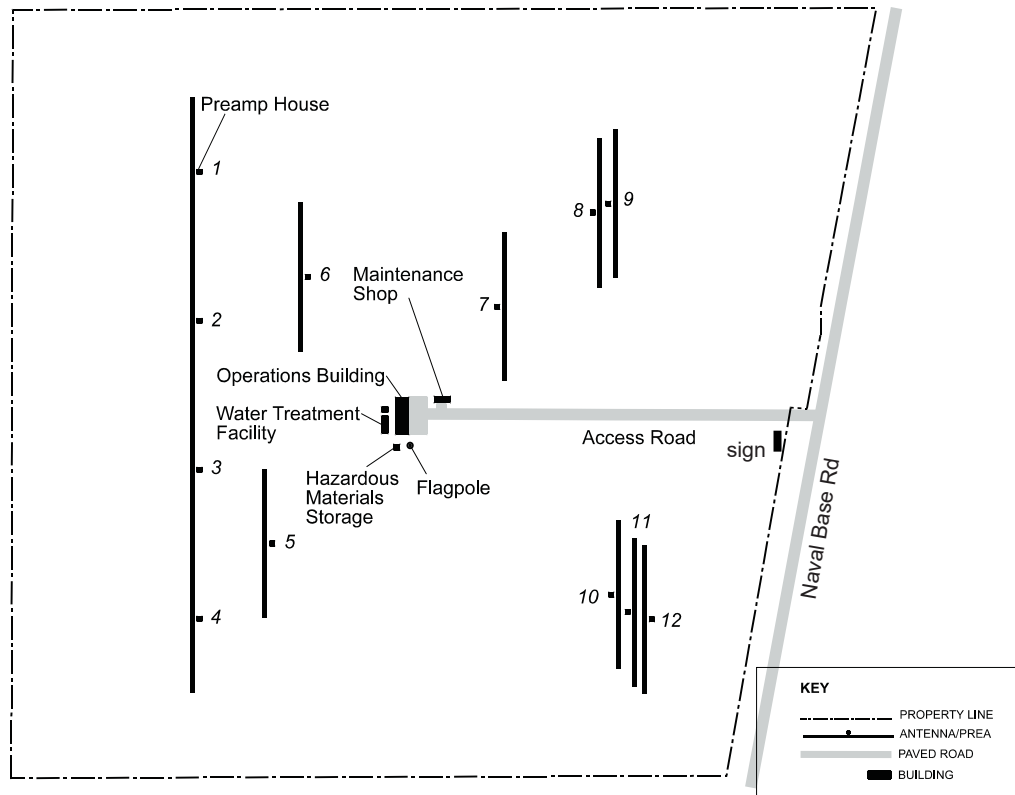
1155 NAVAL BASE RD
GLENNVILLE, GA 30427



LOCATION MAP Tattnall Co. GA



AREA MAP - Glennville Ga



SITE PLAN - TATTNALL FIELD STATION

0 200 400 FT.

Tattnall Space Command Surveillance
Field Station

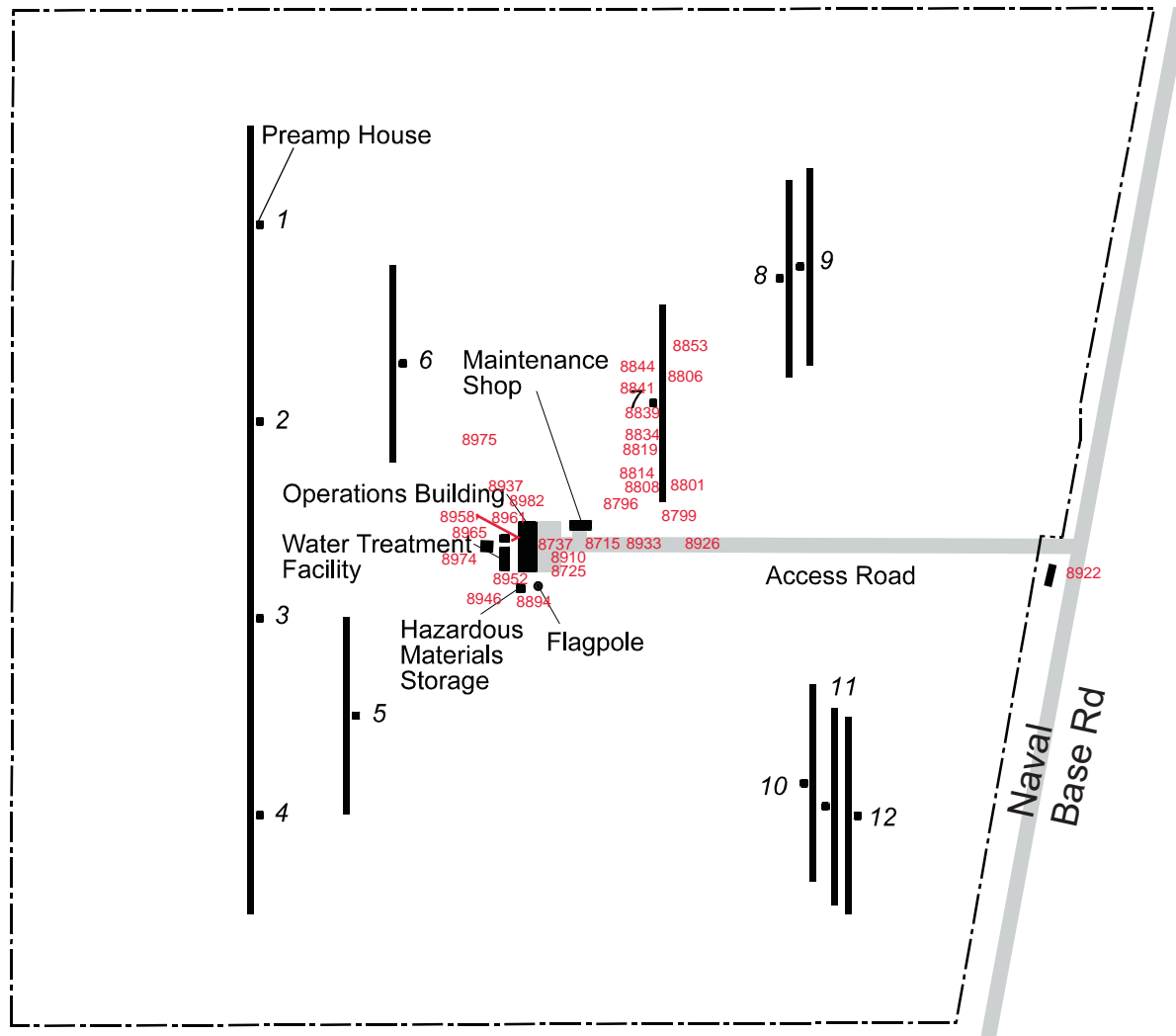


Tattnall Field Station Site Plan. Georgia Historic Preservation Division SHPO Permanent Archival Record (PAR) GSA 2023

KEY

- PROPERTY LINE
- ANTENNA/PREAMP HOUSE
- ▬ PAVED ROAD
- BUILDING

Tattnall Station Naval Space Command Surveillance Field Station



0 200 400 FT.



Tattnall Space Command Surveillance Field Station

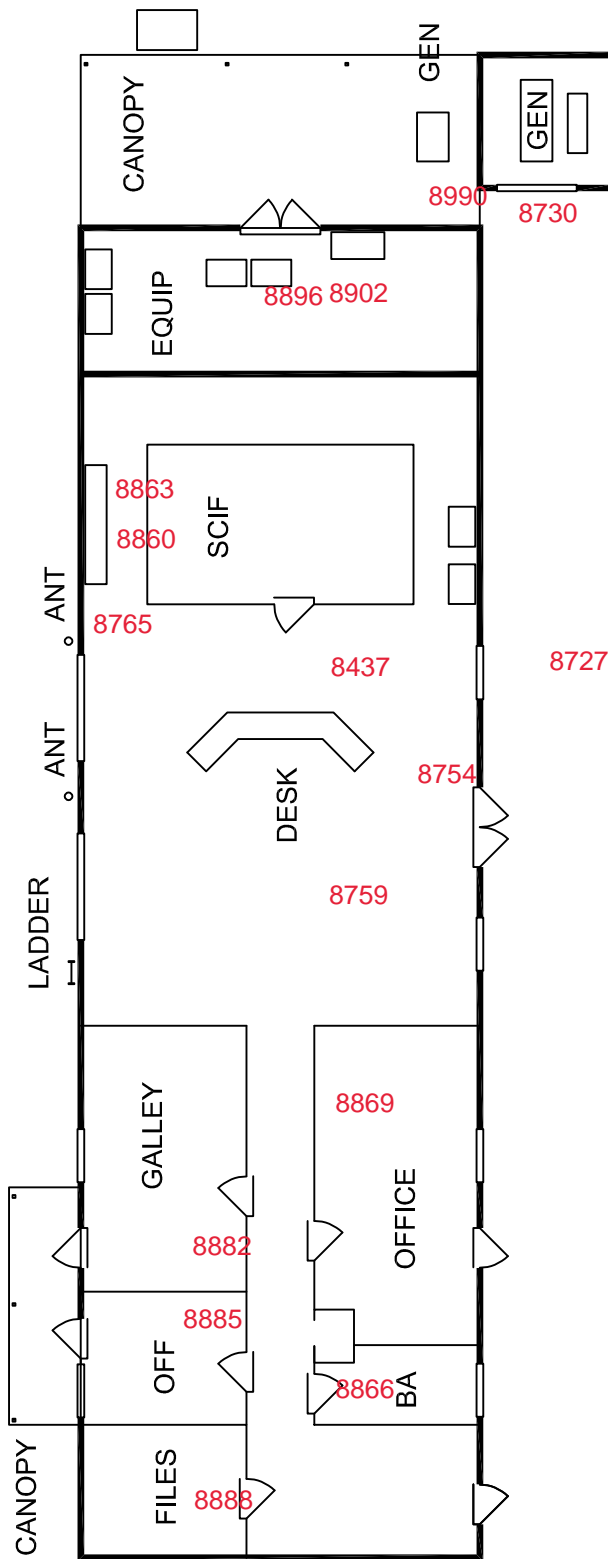




Tattnall Space Command Surveillance Field Station



WELL



FLAG

PARKING LOT



Tattnall Station Naval Space Command Surveillance Field Station				
Naval Base Rd	Glennville, GA 30427	Tattnall County		
Photographer	Sam Harris		Equipment: Nikon D3	19mm PC-E f/4E ED
Photo Date	April 6, 2023			
Location of images	GA SHPO			
PHOTO LOG				
Photograph Number	Description			
TAT_8715	Operations Building East Facade: Facing West			
TAT_8725	Operations Building East Facade: Facing West			
TAT_8727	Operations Building Emergency Generator Building South Facade: Facing North			
TAT_9730	Operations Building Emergency Generator Building Generator Interior Detail: Facing North			
TAT_8737	Operations Building East Facade: Facing Southwest			
TAT_8754	Operations Building Interior - Squad Room Showing SCIF: Facing Northwest			
TAT_8759	Operations Building Interior - Squad Room Showing SCIF: Facing North			
TAT_8765	Operations Building Interior - Squad Room Antenna Array Entrance Equipment: Facing North			
TAT_8796	Antenna Array 7 Structure and Antenna Construction Detail : Facing North			
TAT_8799	Antenna Array 7 South Terminus: Facing North			
TAT_8801	Antenna Array 7 Structure and Antenna Construction Detail : Facing North			
TAT_8806	Antenna Array 7 Structure and Antenna Construction Detail : Facing South			
TAT_8808	Antenna Array 7 Structure and Antenna Construction Detail : Facing North			
TAT_8814	Antenna Array 7 Structure and Antenna Construction Detail : Facing North			
TAT_8819	Antenna Array 7 Structure and Antenna Construction Detail : Facing South			
TAT_8834	Antenna Array 7 Preamp House and Antenna Construction Detail : Facing North			
TAT_8839	Antenna Array 7 Preamp House and Antenna Construction Detail : Facing North			
TAT_8841	Antenna Array 7 Preamp House and Antenna Construction Detail : Facing South			
TAT_8844	Antenna Array 7 Preamp House and Antenna Construction Detail : Facing South			
TAT_8853	Antenna Array 7 Structure and Antenna Construction Detail : Facing North			
TAT_8860	Operations Building Interior - Squad Room Antenna Array Entrance Equipment: Facing West			
TAT_8863	Operations Building Interior - Squad Room Antenna Array Entrance Equipment: Facing West			
TAT_8866	Operations Building Interior - Toilet Room : Facing East			
TAT_8869	Operations Building Interior - Galley: Facing West			

TAT_8877	Operations Building Interior - Galley: Facing South
TAT_8882	Operations Building Interior - Office: Facing West
TAT_8885	Operations Building Interior - Office: Facing West
TAT_8888	Operations Building Interior - Storage: Facing West
TAT_8894	Operation Building South Facade & Hazardous Materials Storage East Facade : Facing North
TAT_8896	Facility Electrical Center Operations Building North: Facing East
TAT_8902	Facility Electrical Center Operations Building North: Facing North
TAT_8910	Operations Building East Facade and Operations Building South Facade: Facing North
TAT_8918	Manintenance Shop Interior: Facing West
TAT_8922	Facility Entrance and Sign: Facing West
TAT_8926	Facility Access Road: Facing West
TAT_8933	Antenna Array 7 South Terminus: Facing North
TAT_8937	Operations Building-West Facade: Facing South
TAT_8946	Operations Building-West Facade: Facing Northeast
TAT_8952	Operations Building-West Facade: Facing North
TAT_8958	Water Treatment Facility: Facing West
TAT_8961	Water Treatment Facility: Facing South
TAT_8965	Spare Material Building: Facing South
TAT_8970	Water Treatment Facility: Facing East
TAT_8974	Water Treatment Facility: Facing South
TAT_8975	Water Treatment Facility: Facing South
TAT_8982	Emergency Generator shed Operations Building - North Facade: Facing South
TAT_8990	Emergency Generator shed Operations Building - North Facade: Facing West



TAT_8737



TAT_8730



TAT_8727



TAT_8725



TAT_8715



TAT_8801



TAT_8799



TAT_8796



TAT_8765



TAT_8759



TAT_8754



TAT_8839



TAT_8834



TAT_8819



TAT_8814



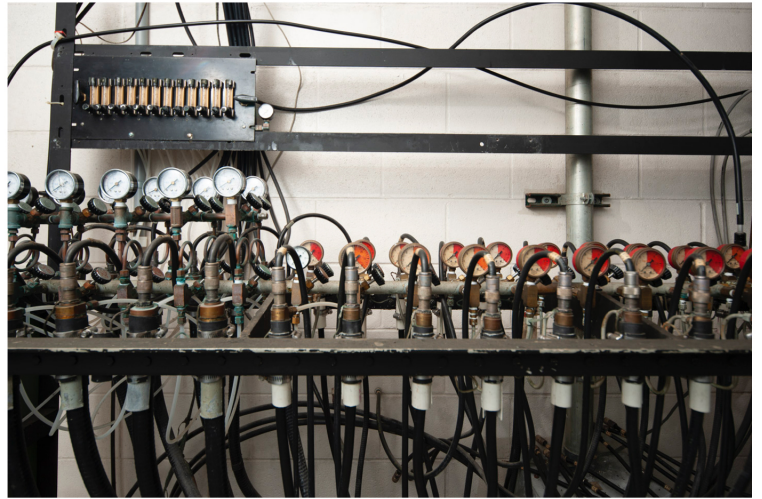
TAT_8808



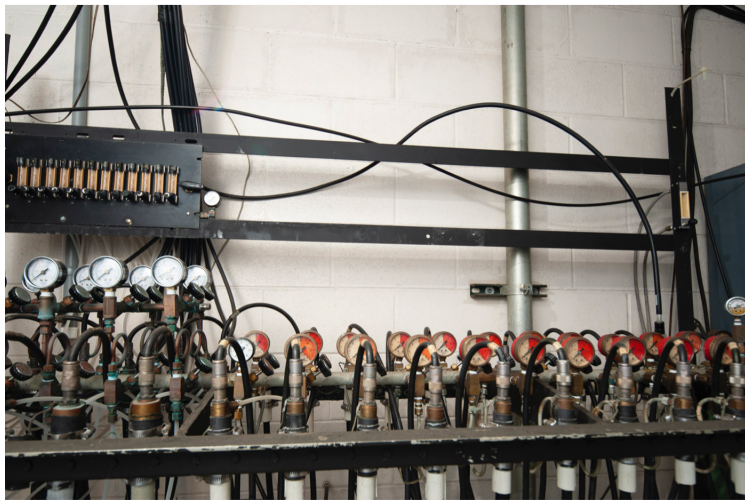
TAT_8806



TAT_8866



TAT_8863



TAT_8860



TAT_8853



TAT_8844



TAT_8841



TAT_8894



TAT_8888



TAT_8885



TAT_8882



TAT_8877



TAT_8869



TAT_8926



TAT_8922



TAT_8918



TAT_8910



TAT_8902



TAT_8896



TAT_8961



TAT_8958



TAT_8952



TAT_8946



TAT_8937



TAT_8933



TAT_8990



TAT_8982



TAT_8975



TAT_8974



TAT_8970



TAT_8965