

FOR SALE

CALEXICO
PORT OF ENTRY

CALEXICO
PORT OF ENTRY

UNITED STATES / MEXICO INTERNATIONAL BORDER

UNITED STATES / MEXICO INTERNATIONAL BORDER

PAN AMERICAN STREET

PAN AMERICAN STREET

3.2 ACRES AVAILABLE

PAN AMERICAN INDUSTRIAL LOT

PAN AMERICAN ST. CALEXICO, CA 92231

PAN AMERICAN INDUSTRIAL LOT

Pan American St. Calexico, CA 92231



VIDEO LINK:
CLICK BUTTON TO VIEW
AERIAL

PROPERTY HIGHLIGHTS



ZONING:

Industrial, part of Gateway of the Americans Specific Plan



ADJACENT:

To Calexico East Port of Entry



HIGHWAY ACCESS:

Minutes to HWY 7 & 98 connecting to Interstate 8



ASKING PRICE:

Contact Broker

PROPERTY FEATURES

Total Size Area: 3.2 Acres

Entitlements: One Legal Lot

Condition: Improved Lot

Utilities: All utilities believed to be at the site

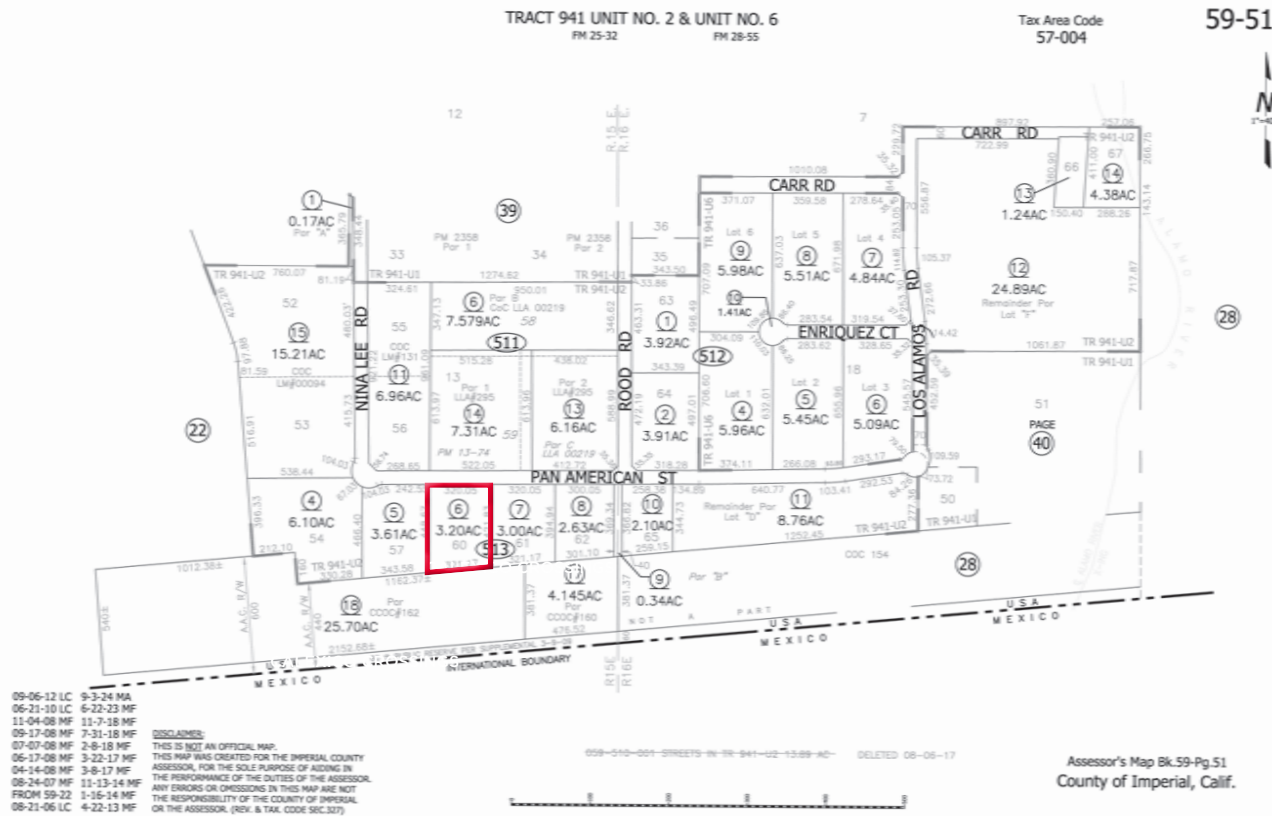
Permitted Use: Truck/trailer parking, warehouse distribution, manufacturing

Off-Site Improvements: Road improvements in place



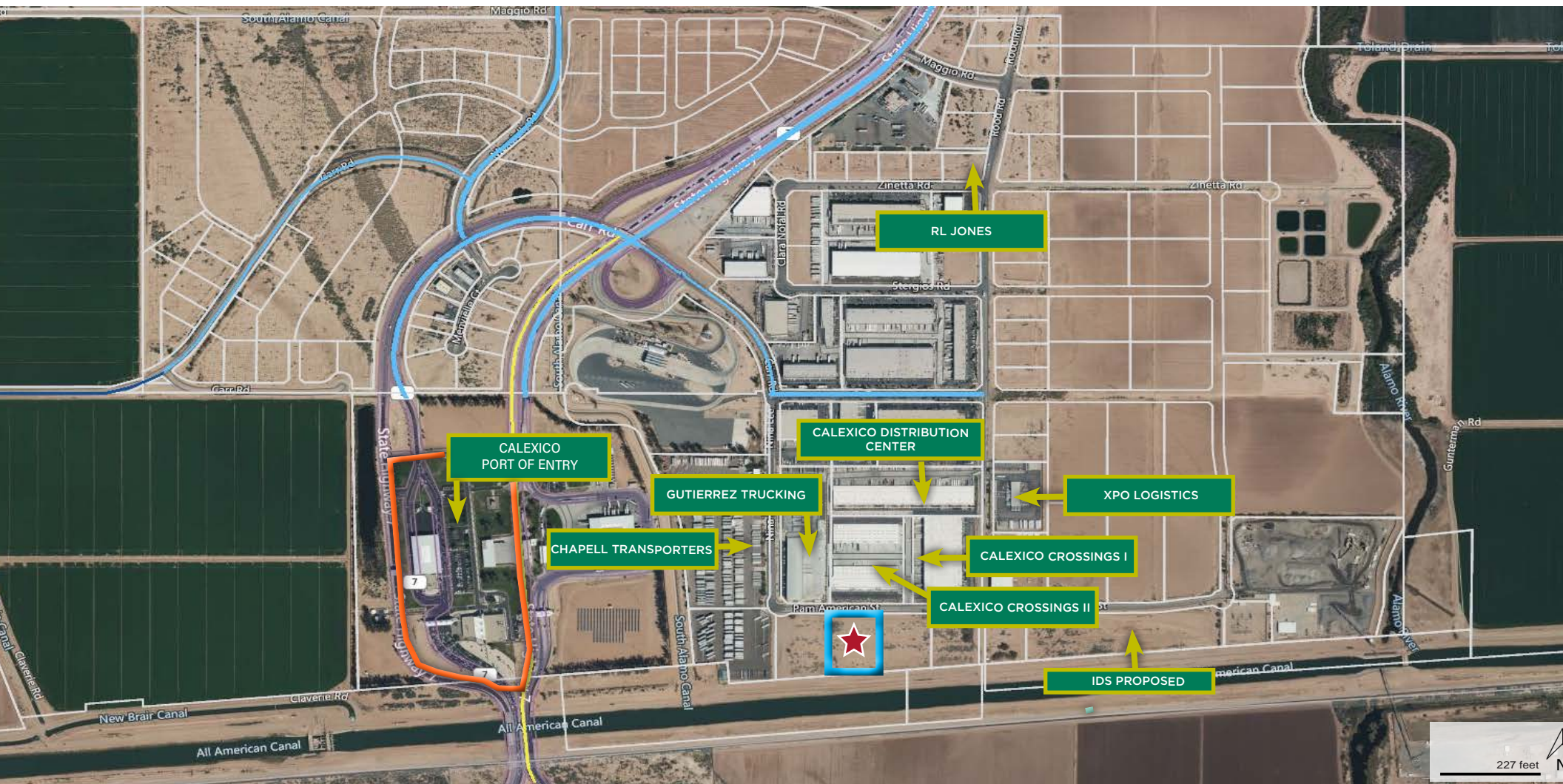
PAN AMERICAN INDUSTRIAL LOT

Pan American St. Calexico, CA 92231



PAN AMERICAN INDUSTRIAL LOT

Pan American St. Calexico, CA 92231



PAN AMERICAN INDUSTRIAL LOT

Pan American St. Calexico, CA 92231

AMENITIES MAP

CALEXICO
PORT OF ENTRY

Chapell Transporters

Gutierrez Trucking LLC

Bimbo Bakeries
J Global Logistics
American Soccer
Company

Reynolds
Logistics Inc

UPS Supply
Chain Solutions

Imperial Truck Parts

Triumph Group, Inc

Tbinxpress

Transportes Binacionales

Delta
International

Casas
International
Brokerage

Baja
Freight

Jack In
The Box

Speedway

Gulfstream

Tarah

Azteca Milling L.P.

Britton &
Company

Federal Motor
Carrier Safety

TT
Electronics

Expresso Forwarding Inc

Hisco Calexico

Calexico
Warehouse Inc

XPO Logistics

JE Exports

JD Group
Teleplan Logistics



PAN AMERICAN INDUSTRIAL LOT

Pan American St. Calexico, CA 92231



VIDEO LINK:
CLICK BUTTON TO VIEW
AERIAL

CALEXICO
PORT OF ENTRY

AERIAL
MAP

PAN AMERICAN STREET





FOR MORE INFORMATION, CONTACT:

Regan Tully
Managing Director
CA License #00712457
Direct: (619) 661-0656
Mobile: (619) 520-2424
regan.tully@cushwake.com

Morrow Botros
Associate Broker
CA License #02196220
Direct: 619.614.1383
Mobile: 760.208.8679
morrow.botros@cushwake.com



**CUSHMAN &
WAKEFIELD**

Address
8780 Sherwood Terrace
San Diego, CA 92154 | USA
cushmanwakefield.com

©2024 Cushman & Wakefield. All rights reserved. The information contained in this communication is strictly confidential. This information has been obtained from sources believed to be reliable but has not been verified. NO WARRANTY OR REPRESENTATION, EXPRESS OR IMPLIED, IS MADE AS TO THE CONDITION OF THE PROPERTY (OR PROPERTIES) REFERENCED HEREIN OR AS TO THE ACCURACY OR COMPLETENESS OF THE INFORMATION CONTAINED HEREIN, AND SAME IS SUBMITTED SUBJECT TO ERRORS, OMISSIONS, CHANGE OF PRICE, RENTAL OR OTHER CONDITIONS, WITHDRAWAL WITHOUT NOTICE, AND TO ANY SPECIAL LISTING CONDITIONS IMPOSED BY THE PROPERTY OWNER(S). ANY PROJECTIONS, OPINIONS OR ESTIMATES ARE SUBJECT TO UNCERTAINTY AND DO NOT SIGNIFY CURRENT OR FUTURE PROPERTY PERFORMANCE.