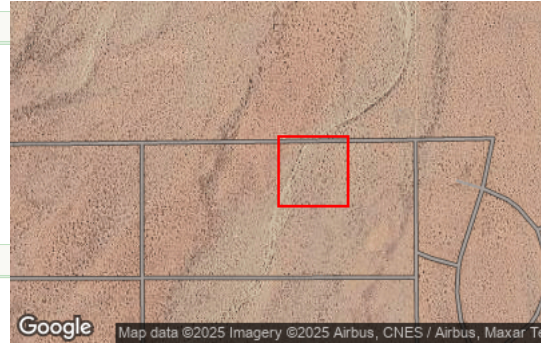


Property Address:

### General Information

Parcel # (APN): **351-112-03-00-4** [Open Map](#)  
 Owner: [See Full Detail](#)  
 Mailing Address: **9 E BROADWAY 4 NEW YORK NY 10038-1072**  
 Legal Description: **S 22 T 32 R 39 \*NW1/4 OF NE1/4 OF NE1/4 SR**  
 Use Type: **VACANT**  
 Tax Rate Area: **011-001**



### Assessment

Total Value:	<b>\$2,228</b>	Year Assd:	<b>2024</b>
Land:	<b>\$2,228</b>	Zoning:	<a href="#">See Full Detail</a>
Structures:		Use Code:	<a href="#">See Full Detail</a>
Other:		Census Tract:	
% Improved:	<a href="#">See Full Detail</a>	Price/SqFt:	
Exempt Amt:			
HO Exempt:	<b>N</b>		

**Full Detail \$14.95** [Add to Cart](#)

**PLEASE NOTE:** If a field is empty on this page, there is available, and the field will also be empty on the Full C property report.

### Sale History

	Sale 1	Sale 2	Sale 3	Transfer
Document Date:	<b>06/18/2018</b>	<a href="#">See Full Detail</a>		<a href="#">See Full Detail</a>
Document Number:	<b>218075703</b>	<a href="#">See Full Detail</a>		<a href="#">See Full Detail</a>
Document Type:	<a href="#">See Full Detail</a>	<a href="#">See Full Detail</a>		
Transfer Amount:	<b>\$2,000</b>	<a href="#">See Full Detail</a>		
Seller (Grantor):	<a href="#">See Full Detail</a>			

### Property Characteristics

Bedrooms:	Fireplace:	Units:
Baths (Full):	A/C:	Stories:
Baths (Half):	Heating:	Quality:
Total Rooms:	Pool:	Building Class:
Bldg/Liv Area:	Park Type:	Condition:
Lot Acres:	Spaces:	Site Influence:
Lot SqFt:	Garage SqFt:	Timber Preserve:
Year Built:		Ag Preserve:
Effective Year:		

\*\*The information provided here is deemed reliable, but is not guaranteed.

**[Additional reports on this prop](#)**