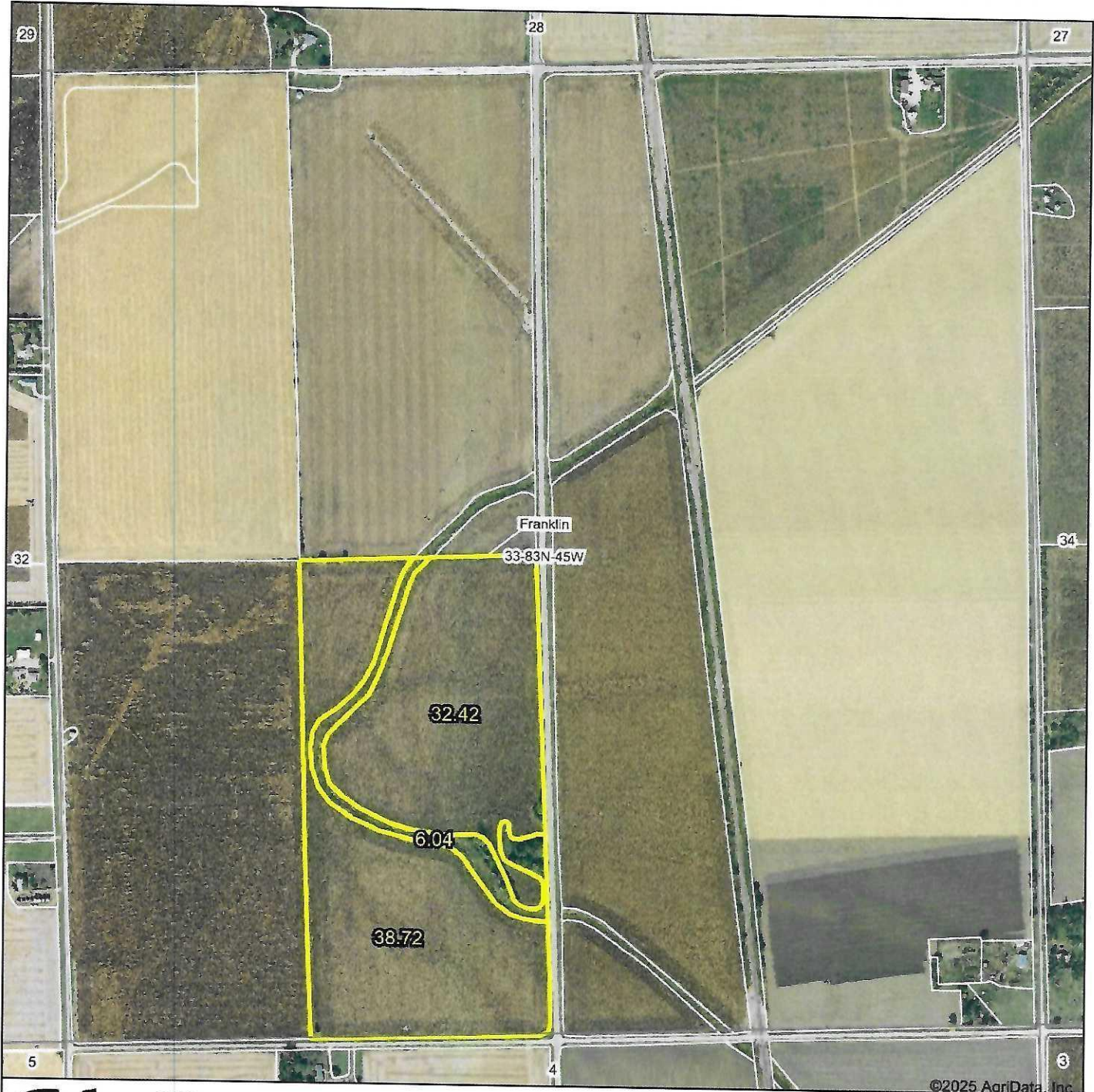


Aerial Map



McCall

AUCTIONS &
REAL ESTATE

Maps Provided By:



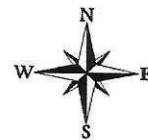
© AgriData, Inc. 2023

www.AgriDataInc.com

Boundary Center: 41° 57' 15.53, -96° 5' 29.12

33-83N-45W
Monona County
Iowa

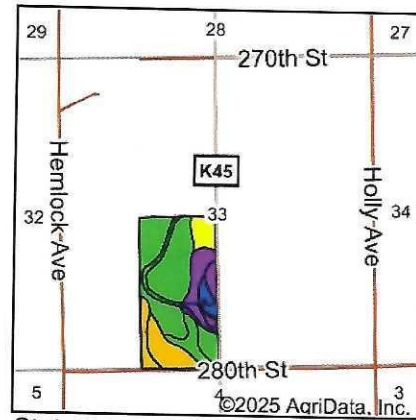
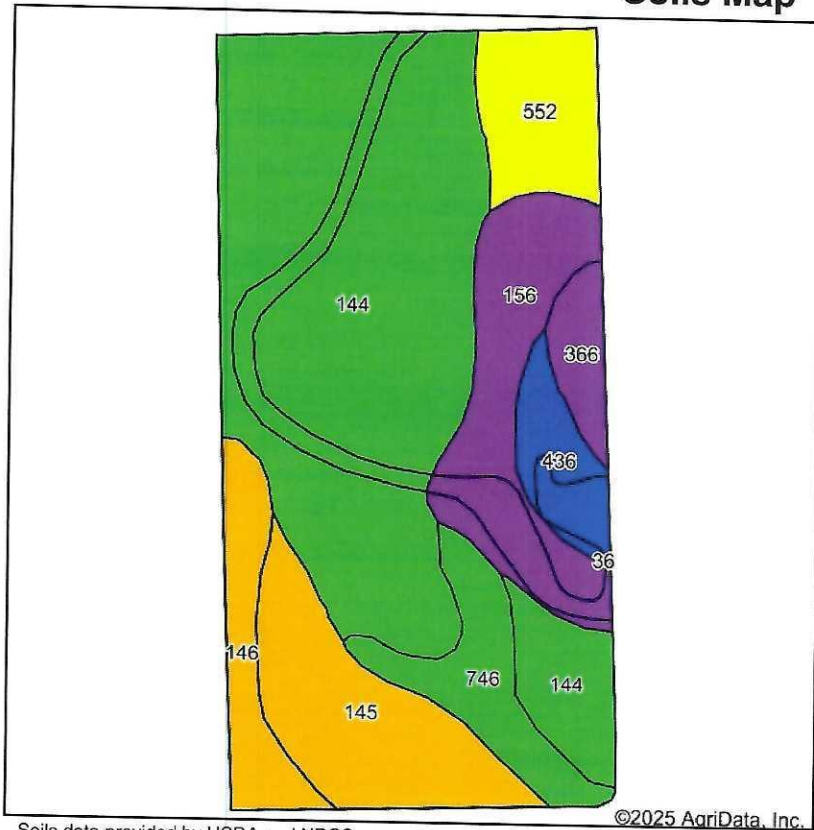
0ft 831ft 1662ft



8/29/2025

Field borders provided by Farm Service Agency as of 5/21/2008.

Soils Map



State: **Iowa**
 County: **Monona**
 Location: **33-83N-45W**
 Township: **Franklin**
 Acres: **77.18**
 Date: **8/29/2025**

McCall

AUCTIONS &
REAL ESTATE

Maps Provided By:

surety
CUSTOMIZED ONLINE MAPPING

© AgriData, Inc. 2023

www.AgridataInc.com



Soils data provided by USDA and NRCS.

©2025 AgriData, Inc.

Area Symbol: IA133, Soil Area Version: 36

Code	Soil Description	Acres	Percent of field	CSR2 Legend	Non-Irr Class *c	Irr Class *c	*i Corn Bu	*i Soybeans Bu	CSR2**	*n NCCPI Corn	*n NCCPI Soybeans
144	Blake silty clay loam, 0 to 2 percent slopes, rarely flooded	38.87	50.4%		I	I	230.4	66.8	98	68	87
156	Albaton silty clay, 0 to 2 percent slopes, rarely flooded	9.35	12.1%		IIIw		185.6	53.8	58	36	49
145	Onawa silt loam, 0 to 2 percent slopes, rarely flooded	9.07	11.8%		IIw		201.6	58.5	78	52	67
746	Lassing silty clay, 0 to 2 percent slopes, rarely flooded	5.32	6.9%		I	I	208.0	60.3	98	57	63
552	Owego silty clay, 0 to 2 percent slopes, rarely flooded	5.05	6.5%		IIIw	IIIw	185.6	53.8	66	41	51
146	Onawa silty clay, 0 to 2 percent slopes, rarely flooded	4.20	5.4%		IIw	IIw	201.6	58.5	79	48	60
436	Lakeport silty clay loam, 0 to 2 percent slopes, rarely flooded	3.15	4.1%		I		214.4	62.2	88	67	70
366	Luton silty clay loam, 0 to 1 percent slopes, rarely flooded	2.17	2.8%		IIIw		185.6	53.8	58	47	58
Weighted Average					1.60	*-	213.6	61.9	86.1	*n 58	*n 73.1

**IA has updated the CSR values for each county to CSR2.

*i Yield data provided by the ISPAID Database version 8.1.1 developed by IA State University.

*n: The aggregation method is "Weighted Average using all components"

*c: Using Capabilities Class Dominant Condition Aggregation Method

*- Irr Class weighted average cannot be calculated on the current soils data due to missing data.

Soils data provided by USDA and NRCS.