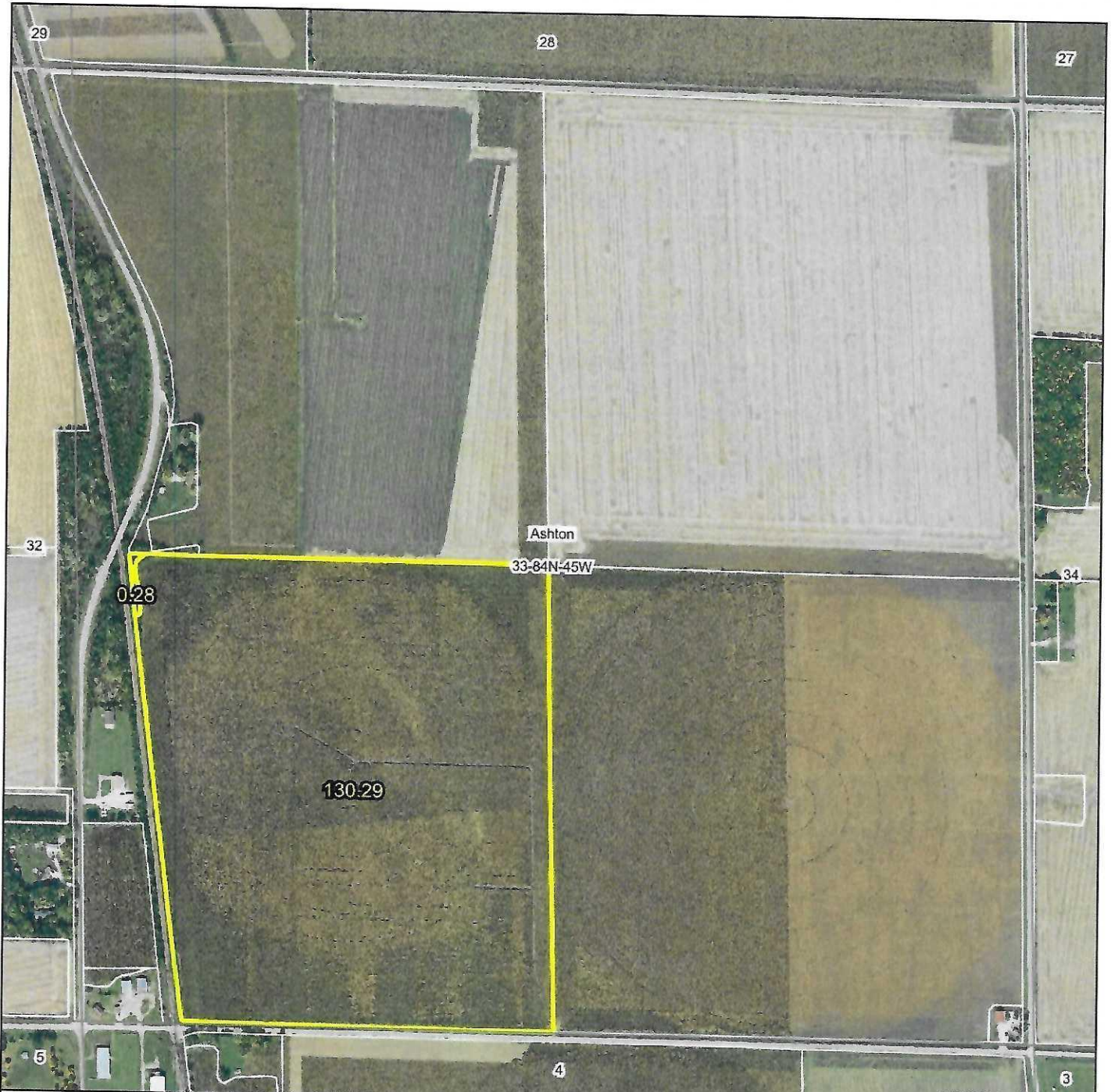


Aerial Map



©2025 AgriData, Inc.

McCall

AUCTIONS &
REAL ESTATE

Maps Provided By:

 **surety**
CUSTOMIZED ONLINE MAPPING

© AgriData, Inc. 2023

www.AgriDataInc.com

Boundary Center: 42° 2' 34.58, -96° 5' 32.06

33-84N-45W
Monona County
Iowa

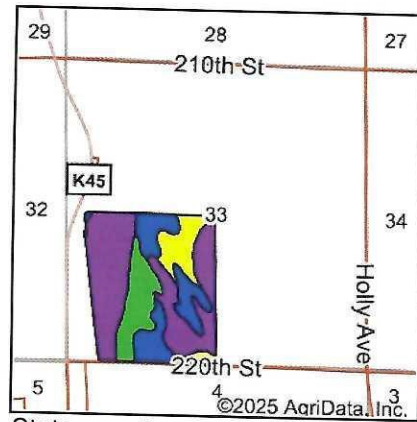
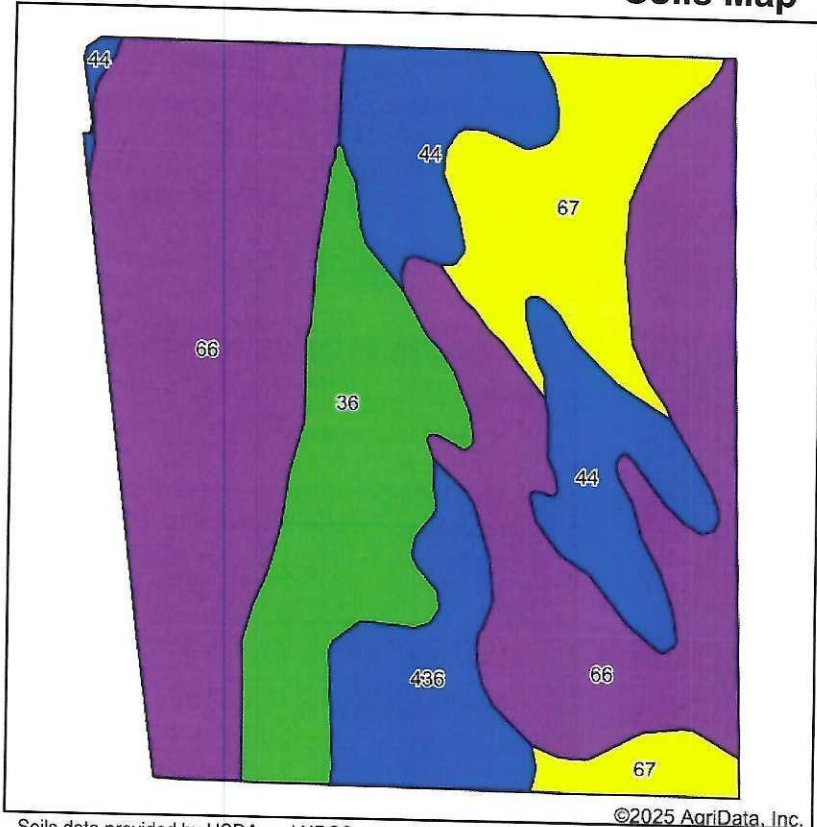
0ft 864ft 1728ft



8/25/2025

Field borders provided by Farm Service Agency as of 5/21/2008.

Soils Map



State: **Iowa**
 County: **Monona**
 Location: **33-84N-45W**
 Township: **Ashton**
 Acres: **130.29**
 Date: **8/25/2025**

McCall

AUCTIONS &
REAL ESTATE

Maps Provided By:



surety
CUSTOMIZED ONLINE MAPPING

© AgriData, Inc. 2023

www.AgridataInc.com



Soils data provided by USDA and NRCS.

©2025 AgriData, Inc.

Area Symbol: IA133, Soil Area Version: 36

Code	Soil Description	Acres	Percent of field	CSR2 Legend	Non-Irr Class *c	Irr Class *c	*i Corn Bu	*i Soybeans Bu	CSR2**	*n NCCPI Corn	*n NCCPI Soybeans
66	Luton silty clay, 0 to 2 percent slopes, rarely flooded	65.88	50.6%		Illw		177.6	51.5	57	41	50
36	Salix silty clay loam, 0 to 2 percent slopes, rarely flooded	19.55	15.0%		I	I	233.6	67.7	100	79	93
44	Blencoe silt clay, 0 to 2 percent slopes, rarely flooded	17.76	13.6%		Ilw		214.4	62.2	87	59	57
67	Woodbury silty clay, 0 to 2 percent slopes, rarely flooded	16.84	12.9%		Illw		184.0	53.4	70	50	53
436	Lakeport silty clay loam, 0 to 2 percent slopes, rarely flooded	10.26	7.9%		I		214.4	62.2	88	67	70
Weighted Average					2.41	*-	194.7	56.5	71.7	*n 52.4	*n 59.4

**IA has updated the CSR values for each county to CSR2.

*i Yield data provided by the ISPAID Database version 8.1.1 developed by IA State University.

*n: The aggregation method is "Weighted Average using all components"

*c: Using Capabilities Class Dominant Condition Aggregation Method

*- Irr Class weighted average cannot be calculated on the current soils data due to missing data.

Soils data provided by USDA and NRCS.