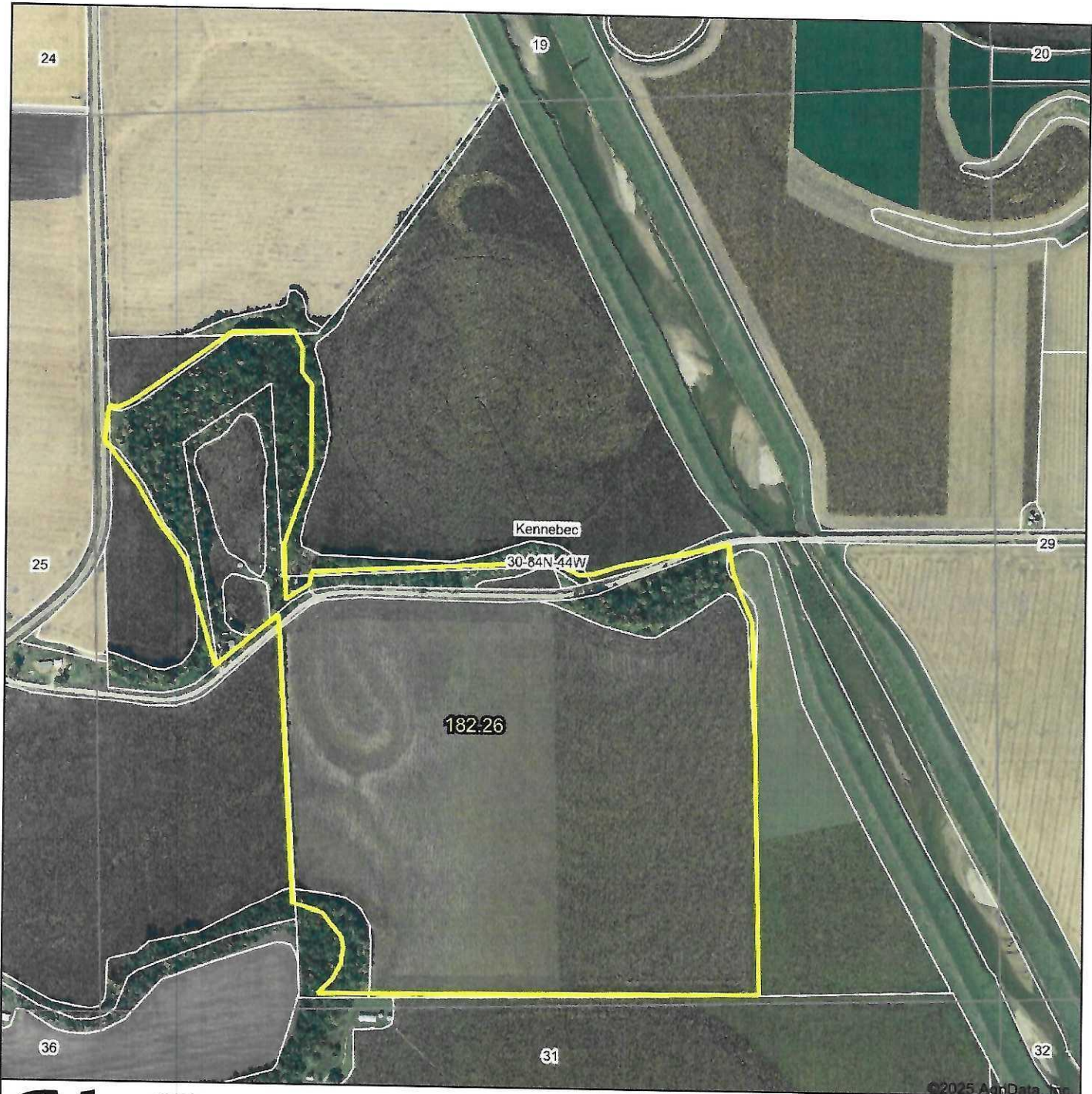


Aerial Map



**McCall**  
AUCTIONS &  
REAL ESTATE

Maps Provided By:

 **surety**  
CUSTOMIZED ONLINE MAPPING

© AgriData, Inc. 2023

www.AgriDataInc.com

Boundary Center: 42° 3' 23.85, -96° 0' 49.54

**30-84N-44W**  
**Monona County**  
**Iowa**

0ft 887ft 1774ft

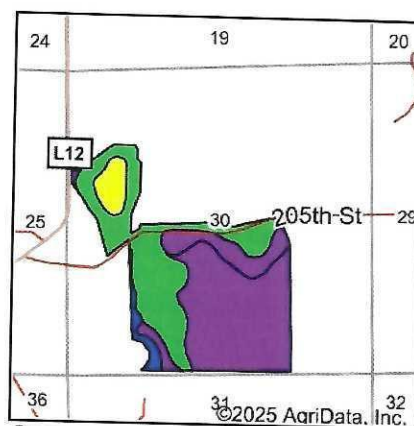
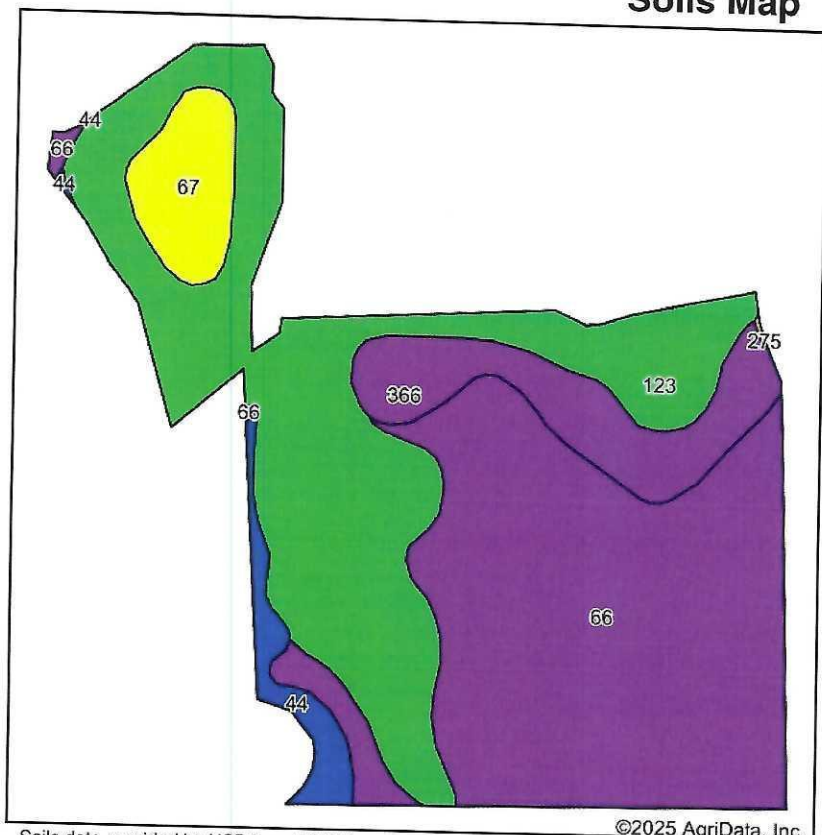


9/12/2025

Field borders provided by Farm Service Agency as of 5/21/2008.



# Soils Map



State: **Iowa**  
 County: **Monona**  
 Location: **30-84N-44W**  
 Township: **Kennebec**  
 Acres: **182.26**  
 Date: **9/12/2025**

**McCall**  
 AUCTIONS &  
 REAL ESTATE

Maps Provided By:

**surety**  
 CUSTOMIZED ONLINE MAPPING  
 © AgriData, Inc. 2023 www.AgriDataInc.com



Soils data provided by USDA and NRCS.

©2025 AgriData, Inc.

Area Symbol: IA133, Soil Area Version: 36

Code	Soil Description	Acres	Percent of field	CSR2 Legend	Non-Irr Class *c	Irr Class *c	*i Corn Bu	*i Soybeans Bu	CSR2**	*n NCCPI Corn	*n NCCPI Soybeans
66	Luton silty clay, 0 to 2 percent slopes, rarely flooded	80.80	44.4%		IIIw		177.6	51.5	57	41	50
123	Grantcenter silty clay loam, 0 to 2 percent slopes, rarely flooded	69.09	37.9%		I		220.8	64.0	100	89	88
366	Luton silty clay loam, 0 to 1 percent slopes, rarely flooded	17.40	9.5%		IIIw		185.6	53.8	58	47	58
67	Woodbury silty clay, 0 to 2 percent slopes, rarely flooded	9.39	5.2%		IIIw		184.0	53.4	70	50	53
44	Blencoe silt clay, 0 to 2 percent slopes, rarely flooded	5.51	3.0%		IIw		214.4	62.2	87	59	57
275	Moville silt loam, 0 to 2 percent slopes, rarely flooded	0.07	0.0%		IIw	IIw	80.0	23.2	75	63	67
<b>Weighted Average</b>					<b>2.21</b>	<b>*-</b>	<b>196.1</b>	<b>56.9</b>	<b>75</b>	<b>*n 60.8</b>	<b>*n 65.5</b>

\*\*IA has updated the CSR values for each county to CSR2.

\*i Yield data provided by the ISPAID Database version 8.1.1 developed by IA State University.

\*n: The aggregation method is "Weighted Average using all components"

\*c: Using Capabilities Class Dominant Condition Aggregation Method

\*- Irr Class weighted average cannot be calculated on the current soils data due to missing data.

Soils data provided by USDA and NRCS.