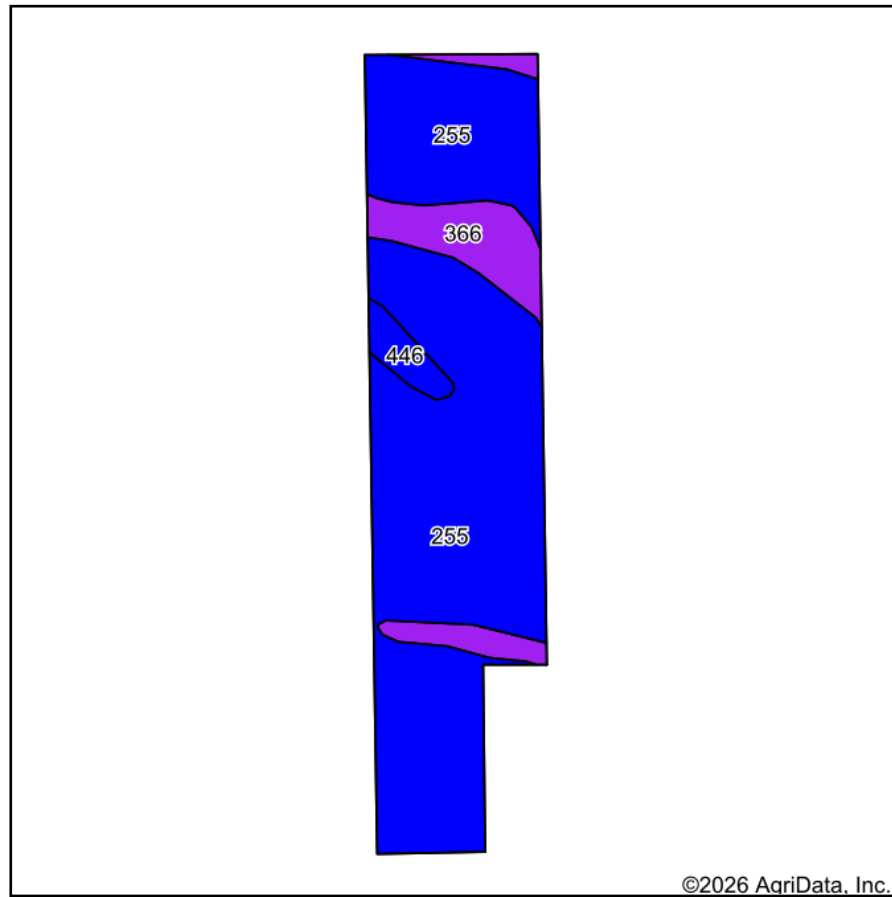
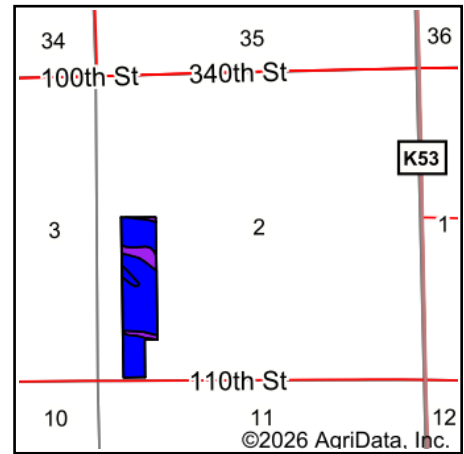


Soils Map



Soils data provided by USDA and NRCS.



State: **Iowa**
 County: **Monona**
 Location: **2-85N-46W**
 Township: **West Fork**
 Acres: **31**
 Date: **1/26/2026**

McCall
 AUCTIONS &
 REAL ESTATE

Maps Provided By:

surety
 CUSTOMIZED ONLINE MAPPING
 © AgriData, Inc. 2025 www.AgriDataInc.com



Area Symbol: IA133, Soil Area Version: 37

Code	Soil Description	Acres	Percent of field	CSR2 Legend	Non-Irr Class *c	*j Corn Bu	*i Soybeans Bu	CSR2**	*n NCCPI Corn	*n NCCPI Soybeans
255	Cooper silty clay loam, 0 to 2 percent slopes, rarely flooded	26.05	84.0%		IIw	80.0	23.2	85	60	60
366	Luton silty clay loam, 0 to 1 percent slopes, rarely flooded	4.02	13.0%		IIIw	185.6	53.8	58	47	58
446	Burcham silt loam, 0 to 2 percent slopes, rarely flooded	0.93	3.0%		I	217.6	63.1	90	61	65
Weighted Average					2.10	97.8	28.4	81.6	*n 58.3	*n 59.9

**IA has updated the CSR values for each county to CSR2.

*i Yield data provided by the ISPAID Database version 8.1.1 developed by IA State University.

*n: The aggregation method is "Weighted Average using all components"

*c: Using Capabilities Class Dominant Condition Aggregation Method

Soils data provided by USDA and NRCS.