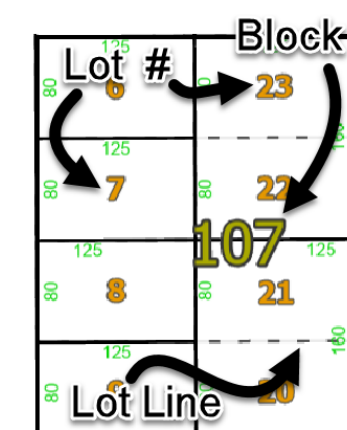


PREPARED FOR
Michelle Franklin, CFA
 SAINT LUCIE COUNTY PROPERTY APPRAISER



Municipality
City Of Fort Pierce

Subdivision
Port Saint Lucie Section 27 PB 14-5

County Boundary
Saint Lucie County

Condo
Prima Vista Commons



ASSESSMENT MAP

THIS MAP HAS BEEN PREPARED FOR THE SAINT LUCIE COUNTY PROPERTY APPRAISER'S PURPOSES ONLY AND DOES NOT NECESSARILY REFLECT AN ACTUAL SURVEY. THE SAINT LUCIE COUNTY PROPERTY APPRAISER DOES NOT ASSUME RESPONSIBILITY FOR ERRORS OR OMISSIONS CONTAINED HEREON.

SECTION: **23**

TOWNSHIP: **34**

RANGE: **40**

SHEET NUMBER
14/23N