

RECORD OF SURVEY
 A PORTION OF THE SW 1/4 OF THE NE 1/4 & A PORTION OF THE SE 1/4 OF THE NW 1/4 OF SECTION 30,
 TOWNSHIP 20 NORTH, RANGE 16 EAST, W.M.,
 KITTITAS COUNTY, WASHINGTON

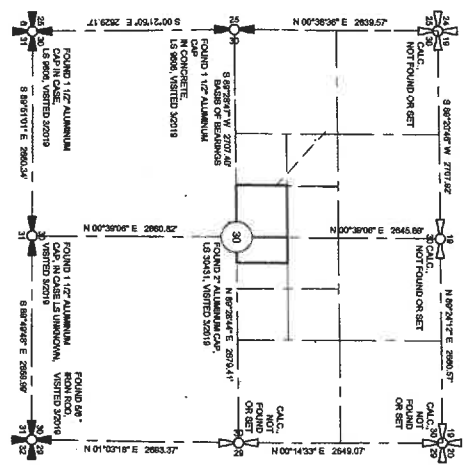
NOTES

- THE PURPOSE OF THIS SURVEY IS TO IDENTIFY AND MARK THE EXTERIOR BOUNDARY LINES OF KITTITAS COUNTY PARCELS, NUMBERS 70204 AND 8000.
- THIS SURVEY WAS PERFORMED USING A TRIMBLE R8 GNSS AND A TRIMBLE S7 3" TOTAL STATION WITH ACCURACY THAT MEETS OR EXCEEDS IACS 300-00-000.
- THIS SURVEY WAS PERFORMED WITHOUT THE SUBMITTAL OF A CONSENT TITLE REPORT THEREFORE, IT DOES NOT PURPORT TO SHOW ALL ENCUMBRANCES OR RESTRICTIONS OF RECORD OR OTHERWISE.
- FOR ADDITIONAL SURVEY AND REFERENCE INFORMATION, SEE THE FOLLOWING:
 - BOOK 22 OF SURVEYS, PAGES 6-10, 47N, 377E
 - BOOK 22 OF SURVEYS, PAGES 60-61, 47N, 377E
 - BOOK 11 OF SURVEYS, PAGES 50-51, 47N, 377E
 - BOOK 11 OF SURVEYS, PAGES 52-53, 47N, 377E
 - BOOK 11 OF SURVEYS, PAGES 54-55, 47N, 377E
 - BOOK 11 OF SURVEYS, PAGES 56-57, 47N, 377E
 - BOOK 11 OF SURVEYS, PAGES 58-59, 47N, 377E
 - BOOK 11 OF SURVEYS, PAGES 60-61, 47N, 377E
 - BOOK 22 OF SURVEYS, PAGES 11, 47N, 384E
 - BOOK 22 OF SURVEYS, PAGES 12, 47N, 384E
 - BOOK 22 OF SURVEYS, PAGES 13, 47N, 384E
 - BOOK 22 OF SURVEYS, PAGES 14, 47N, 384E
 - BOOK 22 OF SURVEYS, PAGES 15, 47N, 384E
 - BOOK 22 OF SURVEYS, PAGES 16, 47N, 384E
 - BOOK 22 OF SURVEYS, PAGES 17, 47N, 384E
 - BOOK 22 OF SURVEYS, PAGES 18, 47N, 384E
 - BOOK 22 OF SURVEYS, PAGES 19, 47N, 384E
 - BOOK 22 OF SURVEYS, PAGES 20, 47N, 384E
 - BOOK 22 OF SURVEYS, PAGES 21, 47N, 384E
 - BOOK 22 OF SURVEYS, PAGES 22, 47N, 384E
 - BOOK 22 OF SURVEYS, PAGES 23, 47N, 384E
 - BOOK 22 OF SURVEYS, PAGES 24, 47N, 384E
 - BOOK 22 OF SURVEYS, PAGES 25, 47N, 384E
 - BOOK 22 OF SURVEYS, PAGES 26, 47N, 384E
 - BOOK 22 OF SURVEYS, PAGES 27, 47N, 384E
 - BOOK 22 OF SURVEYS, PAGES 28, 47N, 384E
 - BOOK 22 OF SURVEYS, PAGES 29, 47N, 384E
 - BOOK 22 OF SURVEYS, PAGES 30, 47N, 384E
 - BOOK 22 OF SURVEYS, PAGES 31, 47N, 384E
 - BOOK 22 OF SURVEYS, PAGES 32, 47N, 384E
 - BOOK 22 OF SURVEYS, PAGES 33, 47N, 384E
 - BOOK 22 OF SURVEYS, PAGES 34, 47N, 384E
 - BOOK 22 OF SURVEYS, PAGES 35, 47N, 384E
 - BOOK 22 OF SURVEYS, PAGES 36, 47N, 384E
 - BOOK 22 OF SURVEYS, PAGES 37, 47N, 384E
 - BOOK 22 OF SURVEYS, PAGES 38, 47N, 384E
 - BOOK 22 OF SURVEYS, PAGES 39, 47N, 384E
 - BOOK 22 OF SURVEYS, PAGES 40, 47N, 384E
 - BOOK 22 OF SURVEYS, PAGES 41, 47N, 384E
 - BOOK 22 OF SURVEYS, PAGES 42, 47N, 384E
 - BOOK 22 OF SURVEYS, PAGES 43, 47N, 384E
 - BOOK 22 OF SURVEYS, PAGES 44, 47N, 384E
 - BOOK 22 OF SURVEYS, PAGES 45, 47N, 384E
 - BOOK 22 OF SURVEYS, PAGES 46, 47N, 384E
 - BOOK 22 OF SURVEYS, PAGES 47, 47N, 384E
 - BOOK 22 OF SURVEYS, PAGES 48, 47N, 384E
 - BOOK 22 OF SURVEYS, PAGES 49, 47N, 384E
 - BOOK 22 OF SURVEYS, PAGES 50, 47N, 384E
 - BOOK 22 OF SURVEYS, PAGES 51, 47N, 384E
 - BOOK 22 OF SURVEYS, PAGES 52, 47N, 384E
 - BOOK 22 OF SURVEYS, PAGES 53, 47N, 384E
 - BOOK 22 OF SURVEYS, PAGES 54, 47N, 384E
 - BOOK 22 OF SURVEYS, PAGES 55, 47N, 384E
 - BOOK 22 OF SURVEYS, PAGES 56, 47N, 384E
 - BOOK 22 OF SURVEYS, PAGES 57, 47N, 384E
 - BOOK 22 OF SURVEYS, PAGES 58, 47N, 384E
 - BOOK 22 OF SURVEYS, PAGES 59, 47N, 384E
 - BOOK 22 OF SURVEYS, PAGES 60, 47N, 384E
- BEARINGS SHOWN HEREON ARE ON THE WASHINGTON COORDINATE SYSTEM (NAD 83) (SPROCKSTON, SOUTH ZONE), DERIVED FROM THE MONUMENT STATION THE FOLLOWING STATION:

STATION DESIGNATION	LATITUDE	LONGITUDE
RD#1	N 47° 02' 16.48"	W 129° 47' 27.0681"
- ALL DISTANCES SHOWN HEREON ARE GROUND SCALE BASED ON A COMBINED SCALE FACTOR (CSF) OF 0.9999994, MULTIPLY CSF BY GROUND DISTANCE TO OBTAIN TRUE DISTANCE.
- ENCUMBRANCE "C", "N", AND "S", AS ILLUSTRATED ON SHEET 1, ARE TO BE ESTABLISHED BY SEPARATE INSTRUMENTS.

LEGAL DESCRIPTION:

KITTITAS COUNTY PARCEL NO. 20726
 CONTAINS THE NORTHWEST QUARTER OF SECTION 30,
 THE SOUTH HALF OF THE EAST HALF OF THE SOUTHWEST QUARTER OF THE NORTHWEST QUARTER OF SECTION 30, TOWNSHIP 20 NORTH, RANGE 16 EAST,
 W.M., IN THE COUNTY OF KITTITAS, STATE OF WASHINGTON.
 KITTITAS COUNTY PARCEL NO. 46933
 CONTAINS THE SOUTHWEST QUARTER OF SECTION 30,
 THE WEST HALF OF THE SOUTHWEST QUARTER OF THE SOUTHWEST QUARTER OF THE NORTHWEST QUARTER IN SECTION 30, TOWNSHIP 20 NORTH, RANGE
 16 EAST, W.M., IN THE COUNTY OF KITTITAS, STATE OF WASHINGTON.



LEGEND

- SECTION CORNER, AS NOTED
- CALCULATED SECTION CORNER
- QUARTER CORNER, AS NOTED
- CALCULATED QUARTER CORNER
- CENTER OF SECTION, AS NOTED



AUDITOR'S CERTIFICATE 2019 05 23 2000 8
 FILED FOR RECORD THIS 23rd DAY OF MAY 2019 AT 11:24 A.M.
 IN BOOK 42 OF SURVEYS AT PAGE 57 AT THE REQUEST OF
 DUSTIN L. PREECE
 SURVEYOR'S NAME
 JEROLD K. FETZT
 Deputy County Auditor

Encompass
 ENGINEERING & SURVEYING
 Western Washington Division
 165 NE Harbor Street, Suite 201 • Issaquah, WA 98027 • Phone: (425) 392-0250 • Fax: (425) 391-3055
 Eastern Washington Division
 407 Sandstone Blvd. • Oak Bluff, WA 98922 • Phone: (509) 674-7433 • Fax: (509) 674-7419

BOUNDARY SURVEY		JOB NO.	
DOWN BY	DATE	D.L.P.	19017
D.L.P./G.W.	05/2019	SCALE	SHEET
CHNG BY	AS NOTED	2	OF 2

A PORTION OF THE NE 1/4 & A PORTION OF THE SE 1/4 OF THE NW 1/4 OF SECTION 30,
 TOWNSHIP 20 NORTH, RANGE 16 EAST, W.M.
 WASHINGTON