

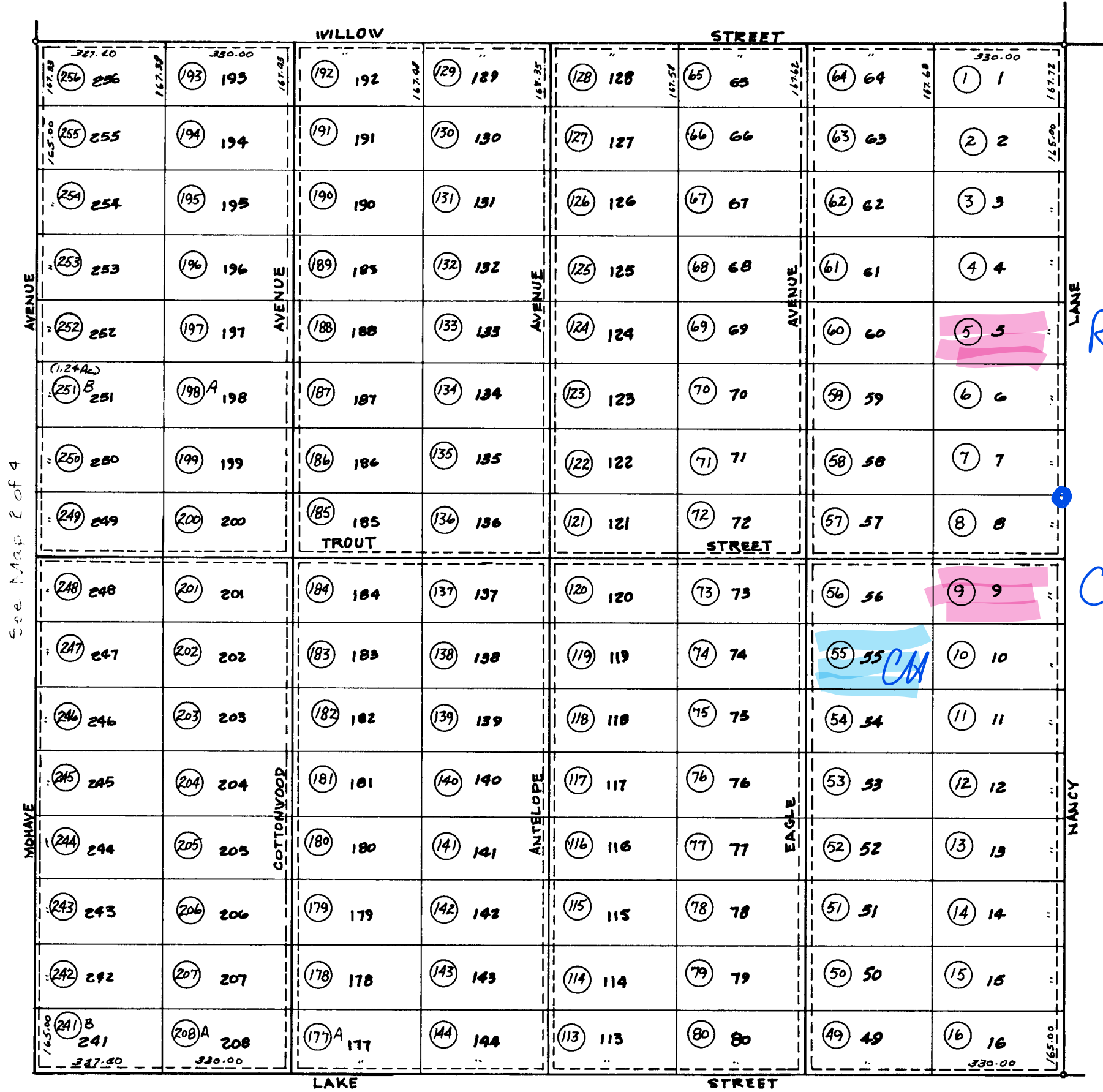
TOWNSHIP 29N RANGE 16W
SECTION 29NE

BOOK 318

LAKE MEAD CITY
UNIT 29-29-16

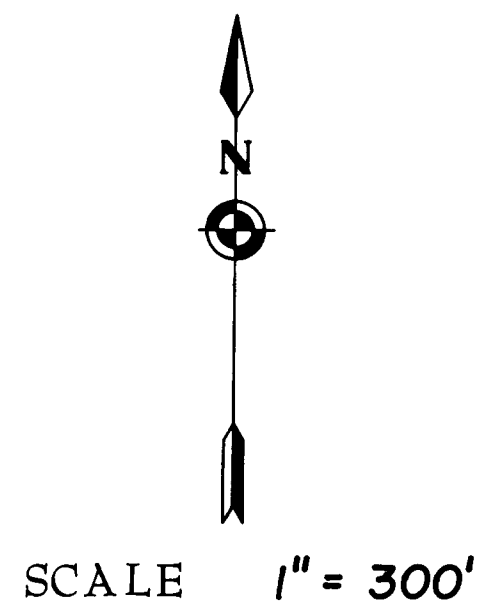
MAP 09

1 of 4
CODE 0400



Ricky Massey

Charles Black



29N - 16W - 29NE
Nov. 26, 2002

MOHAVE COUNTY ASSESSOR