

TOWNSHIP 26N.  
SECTION 15 SW

RANGE 18W.

LAKE MOHAVE RANCHOS

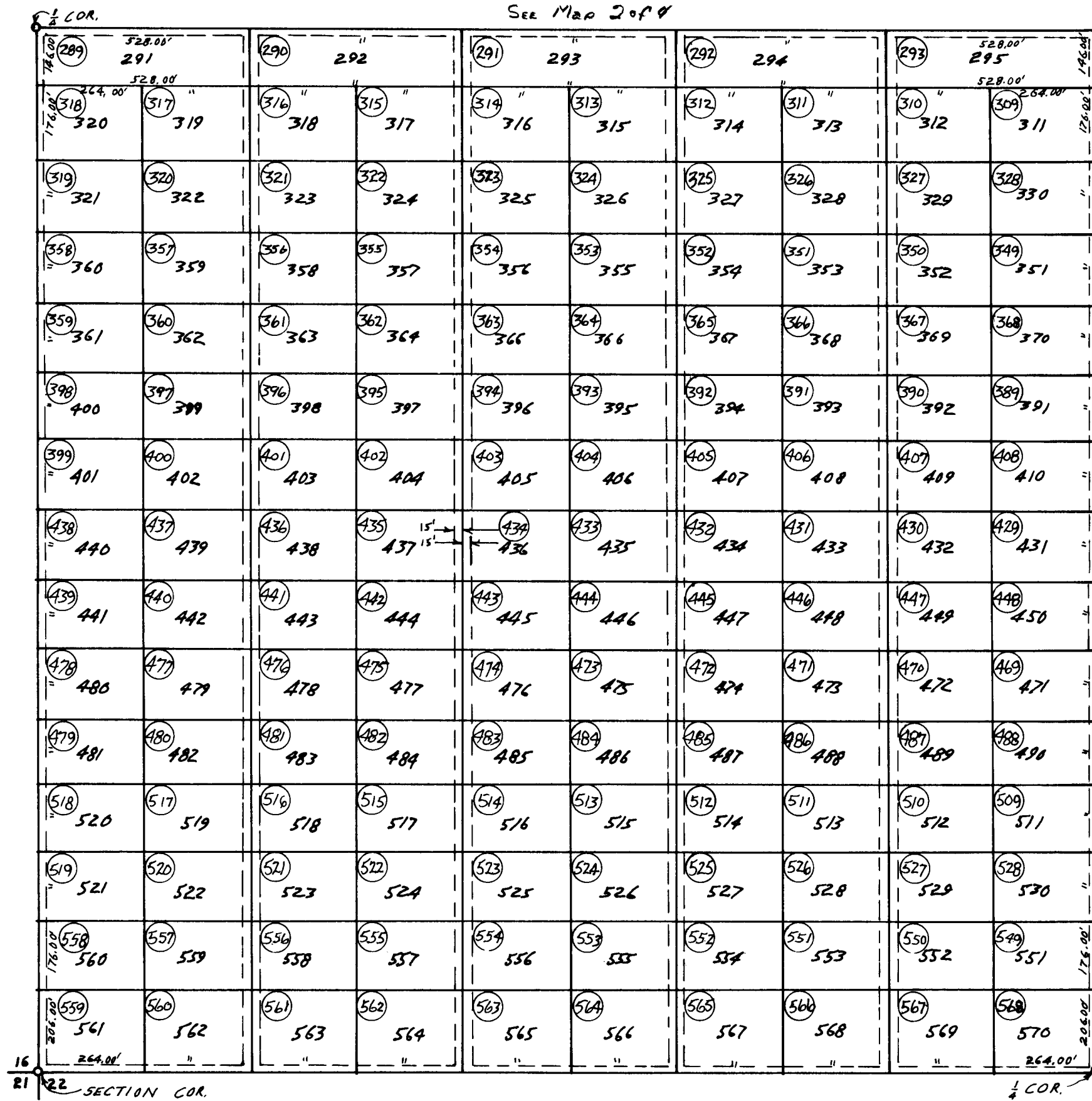
BOOK 328

UNIT II  
AMENDED

MAP 02

3 of 4

CODE 1110



SCALE  
1" = 300'

26N.- 18W.- 15 SW  
SEPT. 30, 1980

MOHAVE COUNTY ASSESSOR