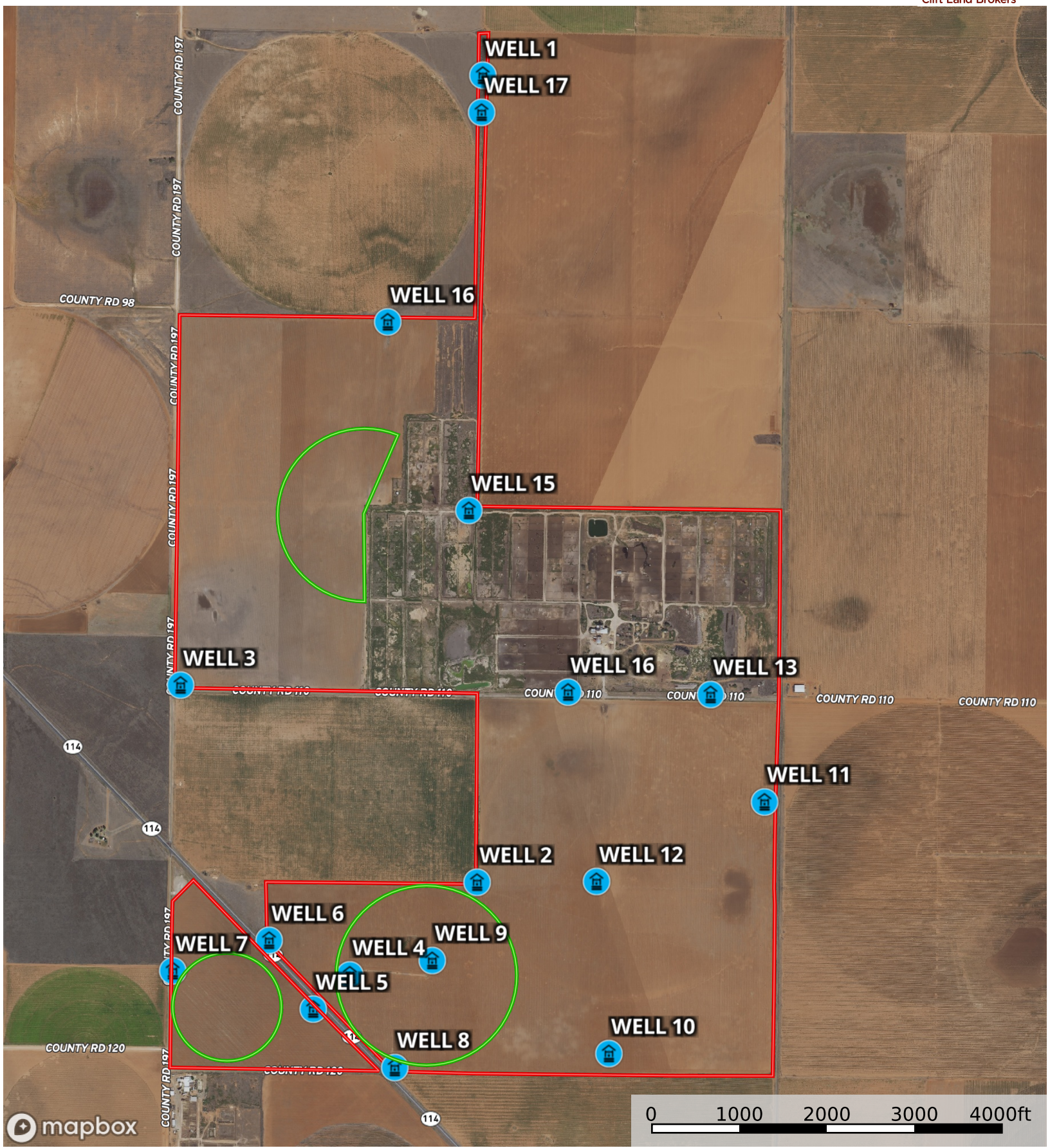





















 Horse Stall	 Loadout	 Hospital Barn	 Barn	 Main House	 Water Storage Tank	 Mill	 Scales	 Office	 Boundary	 Pivot	 Pivot 1
---	---	---	--	--	--	--	--	--	--	---	---





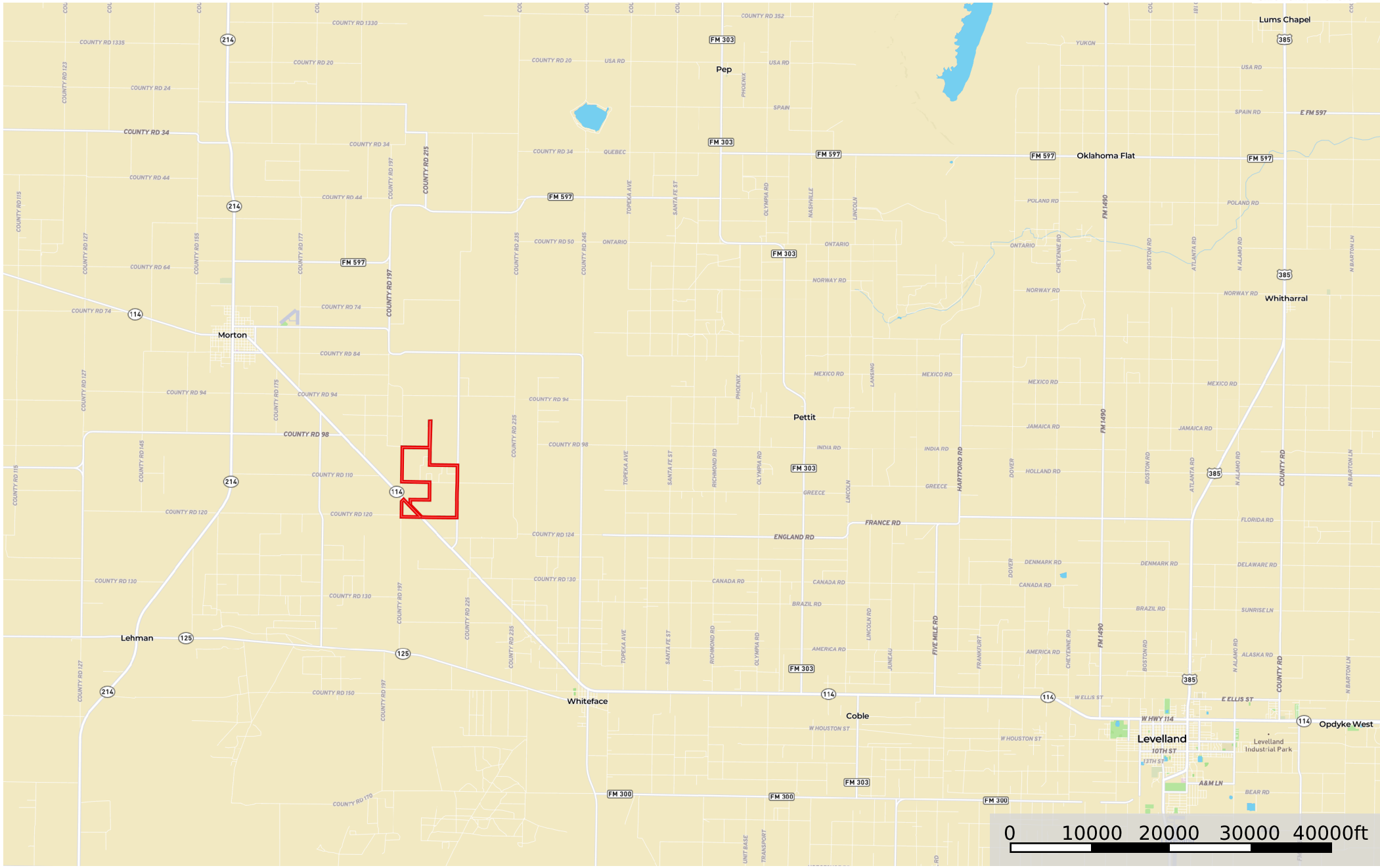
mapbox

0 1000 2000 3000 4000ft

-  Well 8
-  Well 16
-  Well 1
-  Well 17
-  Well 13
-  Well 15
-  Well 3
-  Well 12
-  Well 11
-  Well 2
-  Well 10
-  Well 9
-  Well 4
-  Well 6
-  Well 5
-  Well 7
-  Boundary
-  Pivot
-  Pivot 1

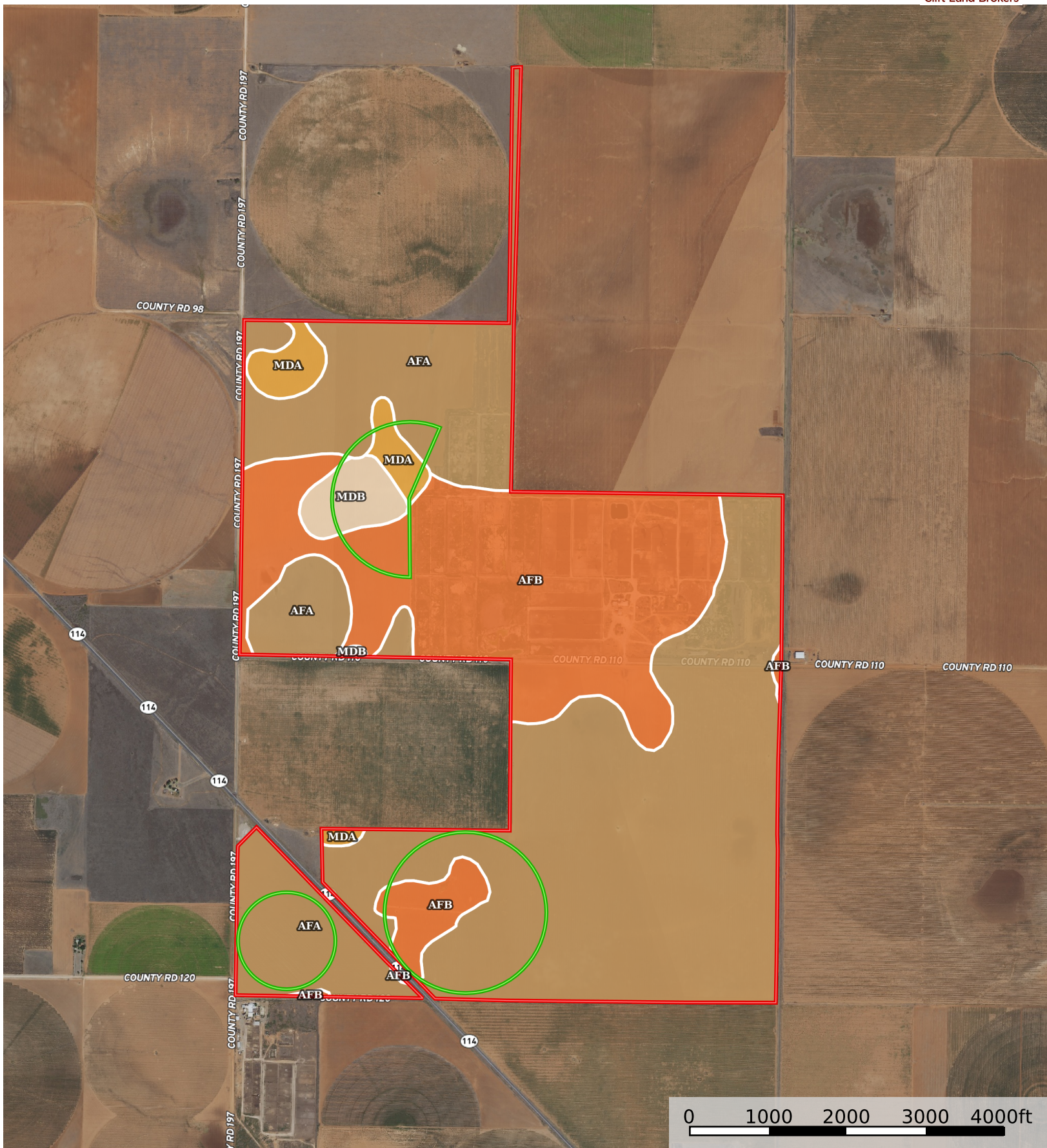


# Cochran County - Heinrich Jordan Land and Livestock, Cochran County, Texas, 1045 AC +/-



 Boundary





 Boundary  Pivot  Pivot 1



|  All Polygons 1016.31 ac

SOIL CODE	SOIL DESCRIPTION	ACRES	%	CPI	NCCPI	CAP
AfA	Amarillo fine sandy loam, 0 to 1 percent slopes	653.8 6	64.34	0	46	3e
AfB	Amarillo fine sandy loam, 1 to 3 percent slopes	310.9 2	30.59	0	46	3e
MdA	Midessa fine sandy loam, 0 to 1 percent slopes	28.35	2.79	0	40	3e
MdB	Midessa fine sandy loam, 1 to 3 percent slopes	23.18	2.28	0	40	3e
TOTALS		1016. 31(*)	100%	-	45.7	3.0

(\*) Total acres may differ in the second decimal compared to the sum of each acreage soil. This is due to a round error because we only show the acres of each soil with two decimal.

|  Boundary 952.35 ac

SOIL CODE	SOIL DESCRIPTION	ACRES	%	CPI	NCCPI	CAP
AfA	Amarillo fine sandy loam, 0 to 1 percent slopes	590.8 4	62.04	0	46	3e
AfB	Amarillo fine sandy loam, 1 to 3 percent slopes	309.9 8	32.55	0	46	3e
MdA	Midessa fine sandy loam, 0 to 1 percent slopes	28.35	2.98	0	40	3e
MdB	Midessa fine sandy loam, 1 to 3 percent slopes	23.18	2.43	0	40	3e
TOTALS		952.3 5(*)	100%	-	45.68	3.0

(\*) Total acres may differ in the second decimal compared to the sum of each acreage soil. This is due to a round error because we only show the acres of each soil with two decimal.

|  Boundary 63.96 ac

SOIL CODE	SOIL DESCRIPTION	ACRES	%	CPI	NCCPI	CAP
AfA	Amarillo fine sandy loam, 0 to 1 percent slopes	63.02	98.53	0	46	3e
AfB	Amarillo fine sandy loam, 1 to 3 percent slopes	0.94	1.47	0	46	3e
TOTALS		63.96( *)	100%	-	46.0	3.0

(\*) Total acres may differ in the second decimal compared to the sum of each acreage soil. This is due to a round error because we only show the acres of each soil with two decimal.











## Capability Legend

Increased Limitations and Hazards

Decreased Adaptability and Freedom of Choice Users

Land, Capability

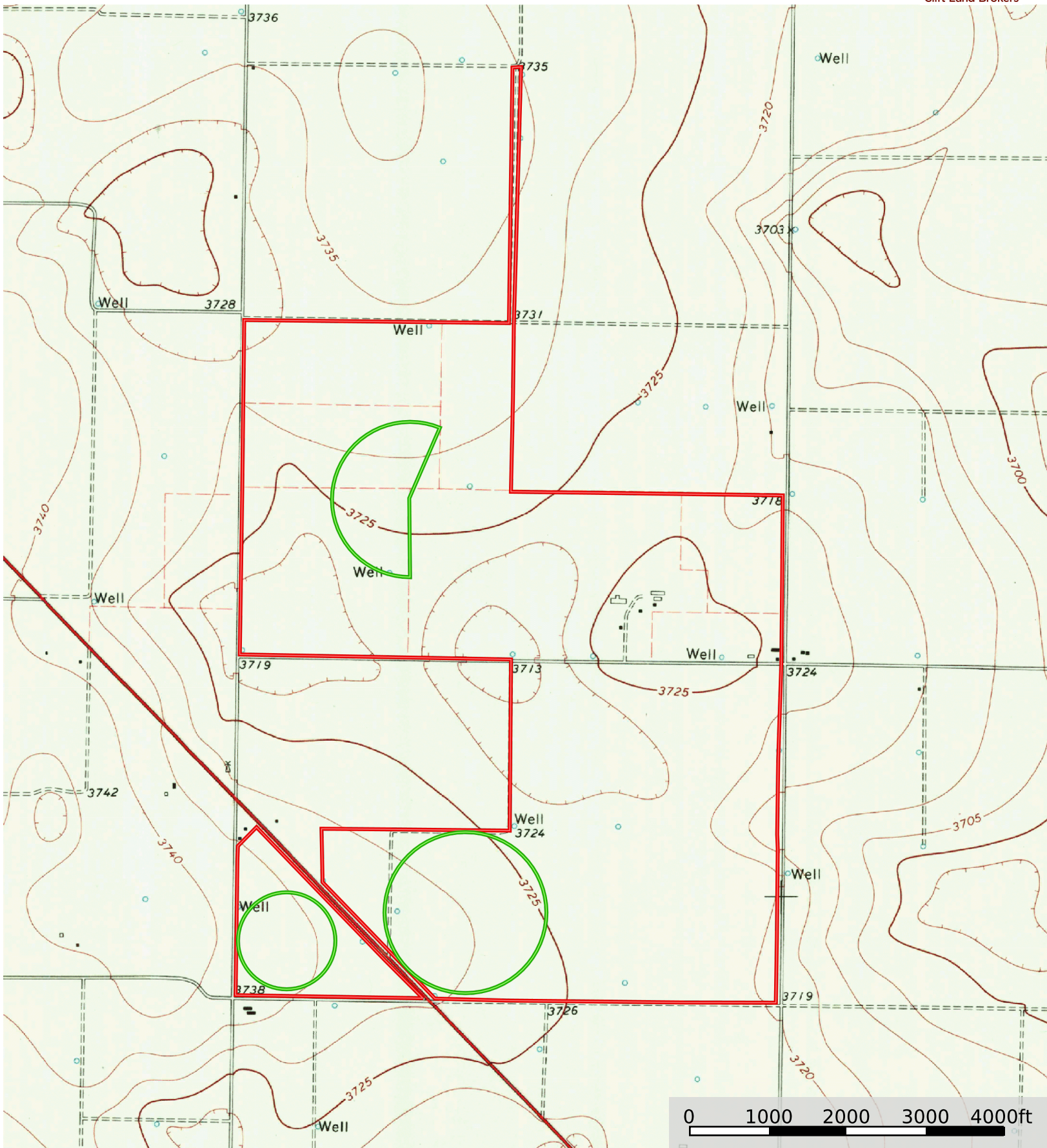
								
	1	2	3	4	5	6	7	8
'Wild Life'	•	•	•	•	•	•	•	•
Forestry	•	•	•	•	•	•	•	
Limited	•	•	•	•	•	•	•	
Moderate	•	•	•	•	•	•		
Intense	•	•	•	•	•			
Limited	•	•	•	•				
Moderate	•	•	•					
Intense	•	•						
Very Intense	•							

### Grazing Cultivation

(c) climatic limitations (e) susceptibility to erosion

(s) soil limitations within the rooting zone (w) excess of water





 Boundary  Pivot  Pivot 1