



Clift Land Brokers



**CELEBRITY FEEDERS
3,490 ± ACRES
CIMARRON COUNTY, OK**

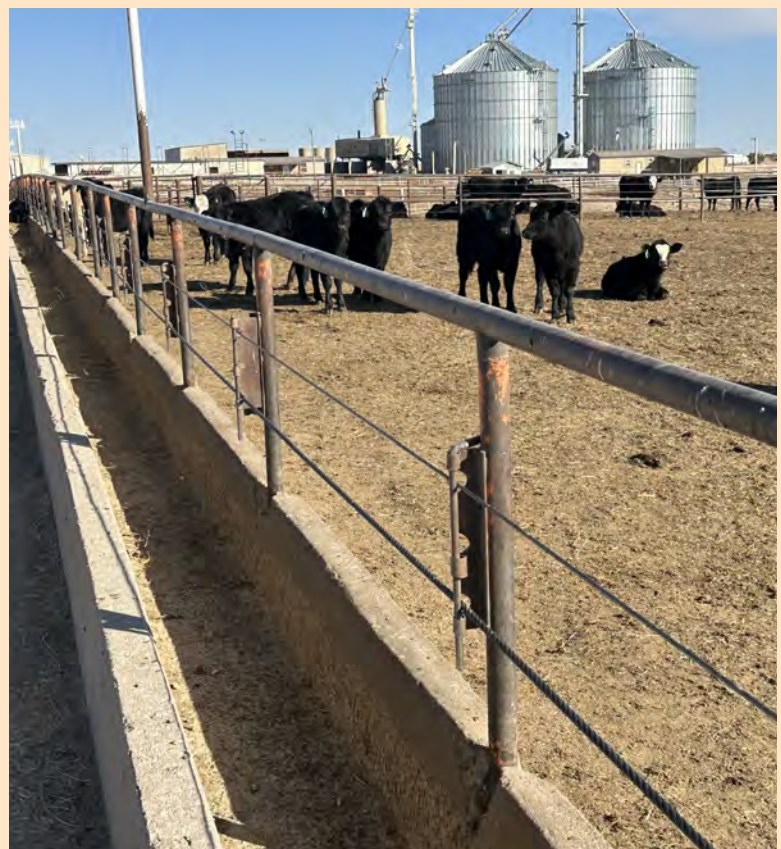
Bryan Clift | 806.679.9421 | bryan@cliftlandbrokers.com
401 S. Poplar St. Stratford, TX 79084

MAIN YARD

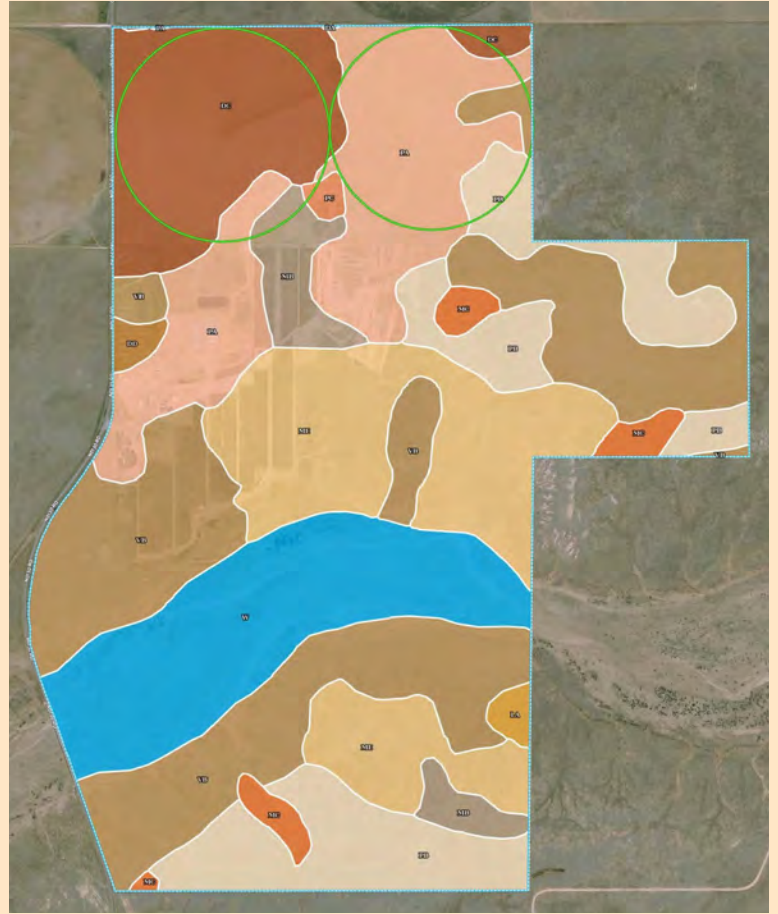
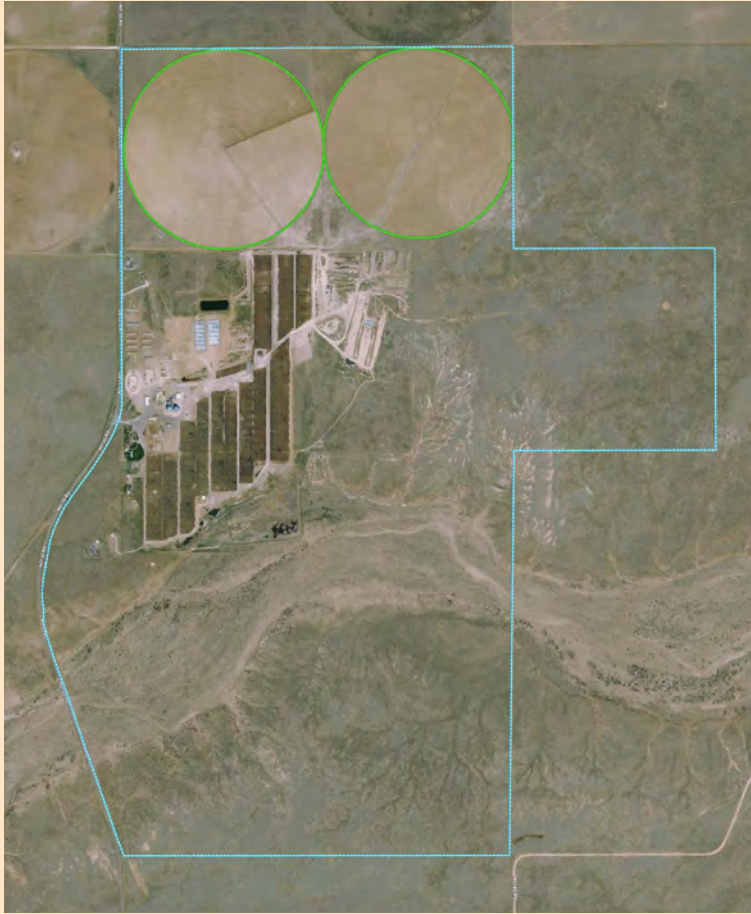


Located just two miles north of Felt, OK in Cimarron County. This property is 1,480 ± acres which includes 800 ± acres of native grass and 240 ± acres of irrigated farmland. There are 10,000' of fence line concrete bunks and 1,200' of dairy heifer lockups with 600 lockups. Two hospital/processing barns, an office, and eight employee houses. There are grain bins with a 580,000 bushels capacity.

The feed center consists of a steam flaker, a micro-ingredient machine, two stationary feed mixers, and concrete commodity bunkers. There is a 70' truck/cattle scale at the office and a 50'x100' mechanics shop. There are two 2007 Valley sprinklers nozzled at 400 gpm with the water provided by three irrigation wells producing 800 gpm in total.



PROPERTY MAPS



SOUTH YARD



This property is on the eastern edge of Felt, OK with pavement on two sides, and is 200 ± acres which includes 60 ± acres of irrigated farmland. There are 8,400' of fence line concrete bunks. There is a hospital/processing barn that is connected to the main yard's medicine software. A set of 70' truck/cattle scales and a concrete commodity bunker barn. One employee trailer house sits on this property. The irrigated farm consists of a 2010 Zimmatic sprinkler with one 500 gpm turbine well.



PROPERTY MAPS



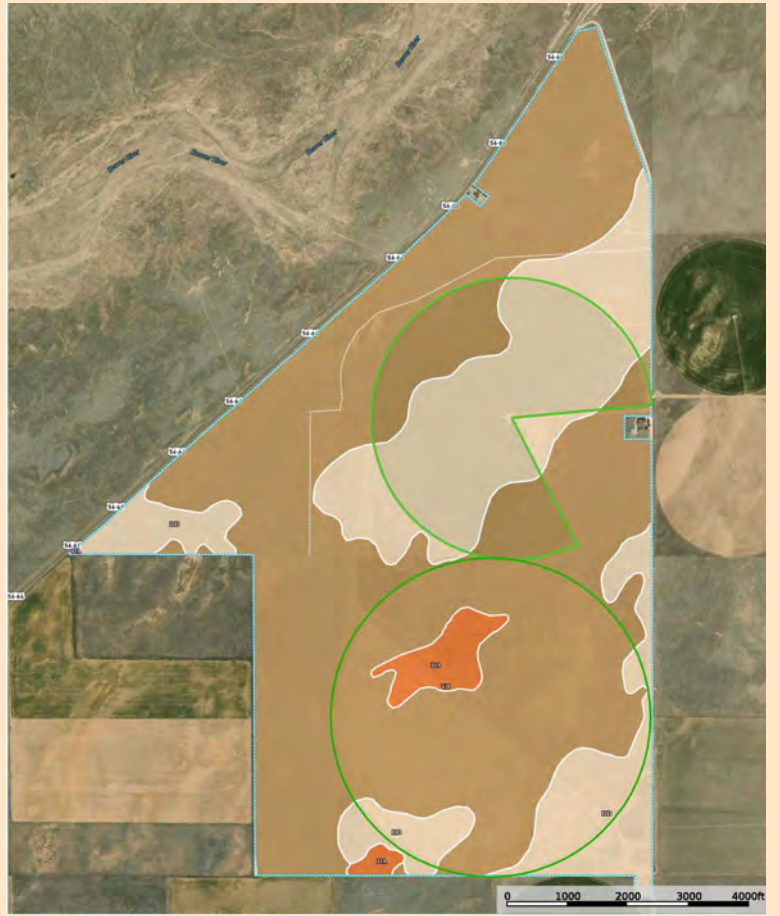
STAFFORD FARM

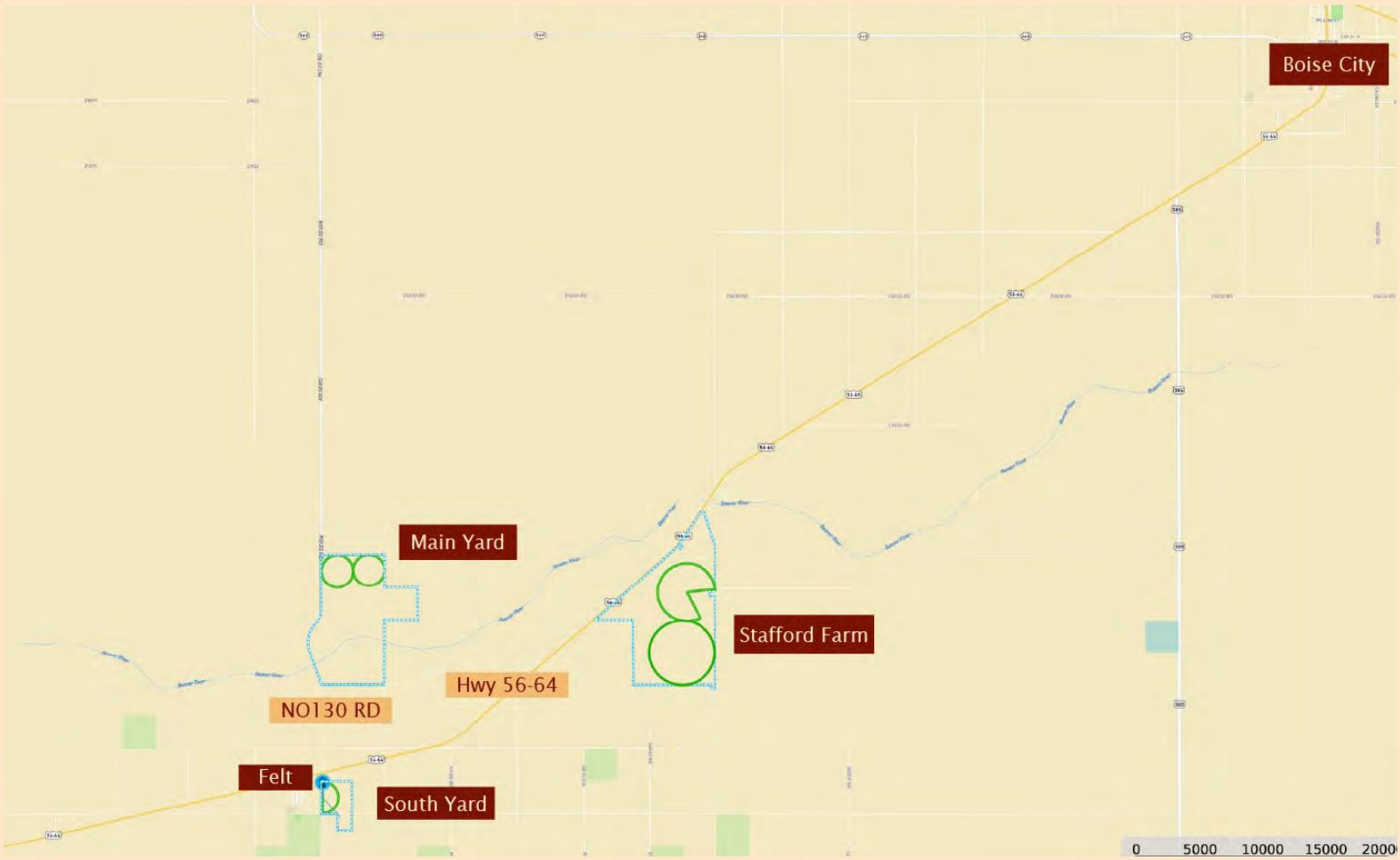


Stafford Farm is 1,790 ± acres total with frontage on Hwy 56/64 and is 790 ± acres of irrigation and 1,000 ± acres of grass. The irrigation consists of two 2007 Reinke half-mile sprinklers with water provided by five irrigation wells supplying 2,200 gpm total. There is a nice framed house and one trailer house on the southeast corner of this property.



PROPERTY MAPS





All properties are located east of Felt, OK off of Hwy 56-64.



Main Yard



South Yard



Stafford Farm

905 S Fillmore St. Ste. 102
Amarillo, TX 79101
806.355.9856
cliftlandbrokers.com