


1,800.4 ft 1,987.8 ft



Contour Interval (feet):

10

Range

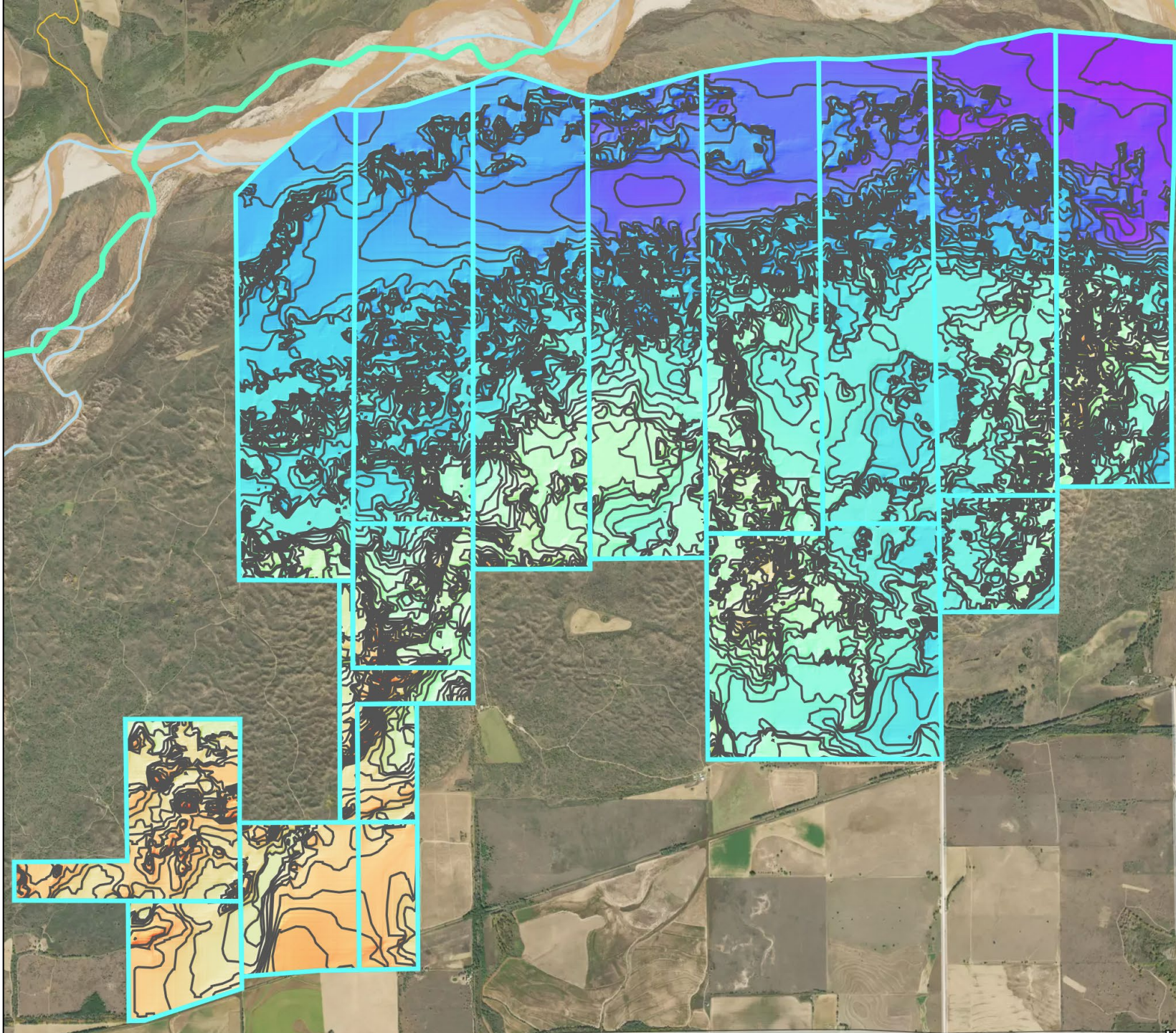
187.3 ft

Min 1,800.4 ft
Max 1,987.8 ft

Slope

4.0 %

Min 0.0 %
Max 52.3 %



1,800.4 ft

1,987.8 ft



Contour Interval (feet):

Range

187.3 ft

Min 1,800.4 ft

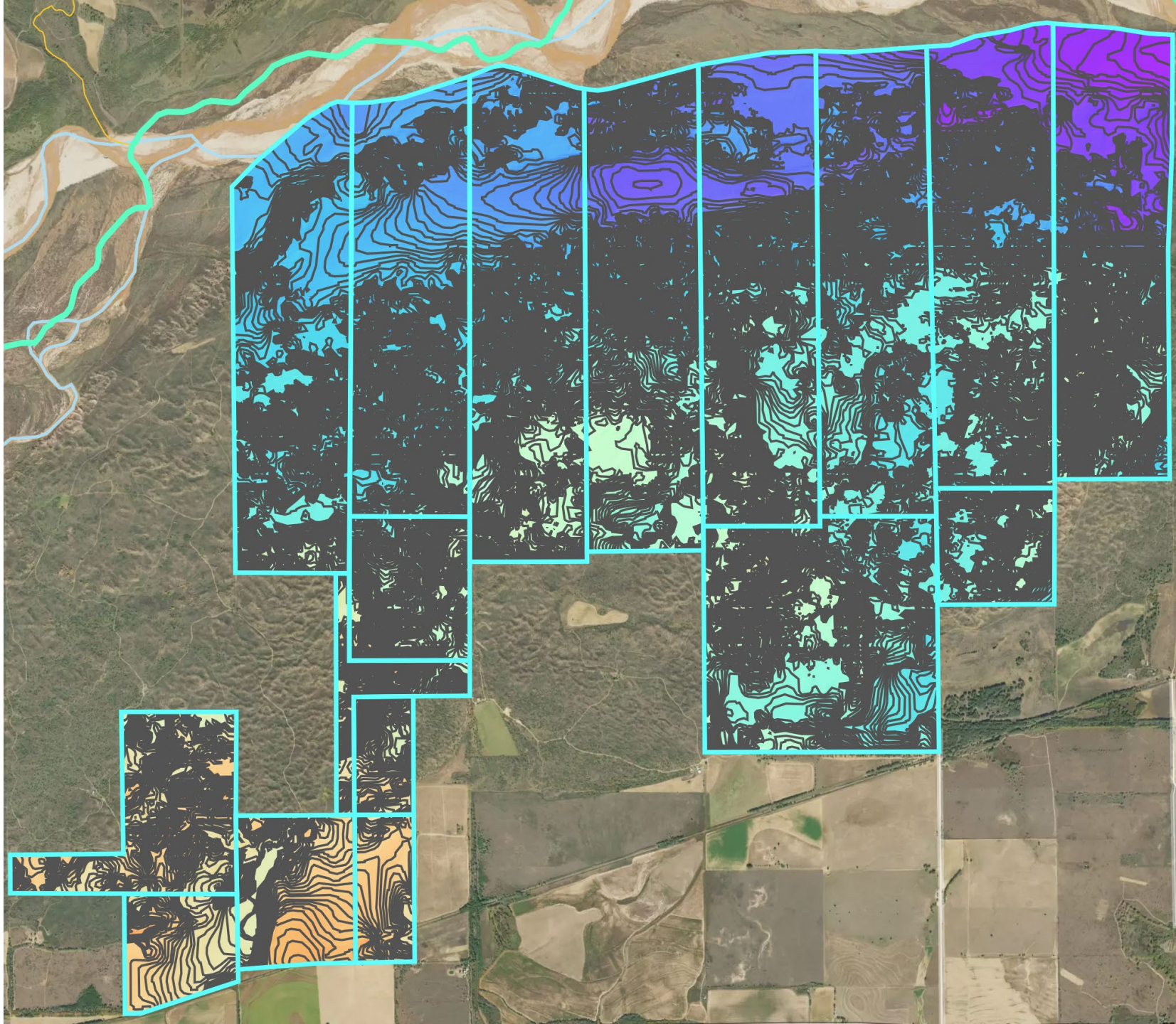
Max 1,987.8 ft

Slope

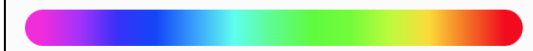
4.0 %

Min 0.0 %

Max 52.3 %



1,800.4 ft 1,987.8 ft



Contour Interval (feet):

Range

187.3 ft

Min 1,800.4 ft

Max 1,987.8 ft

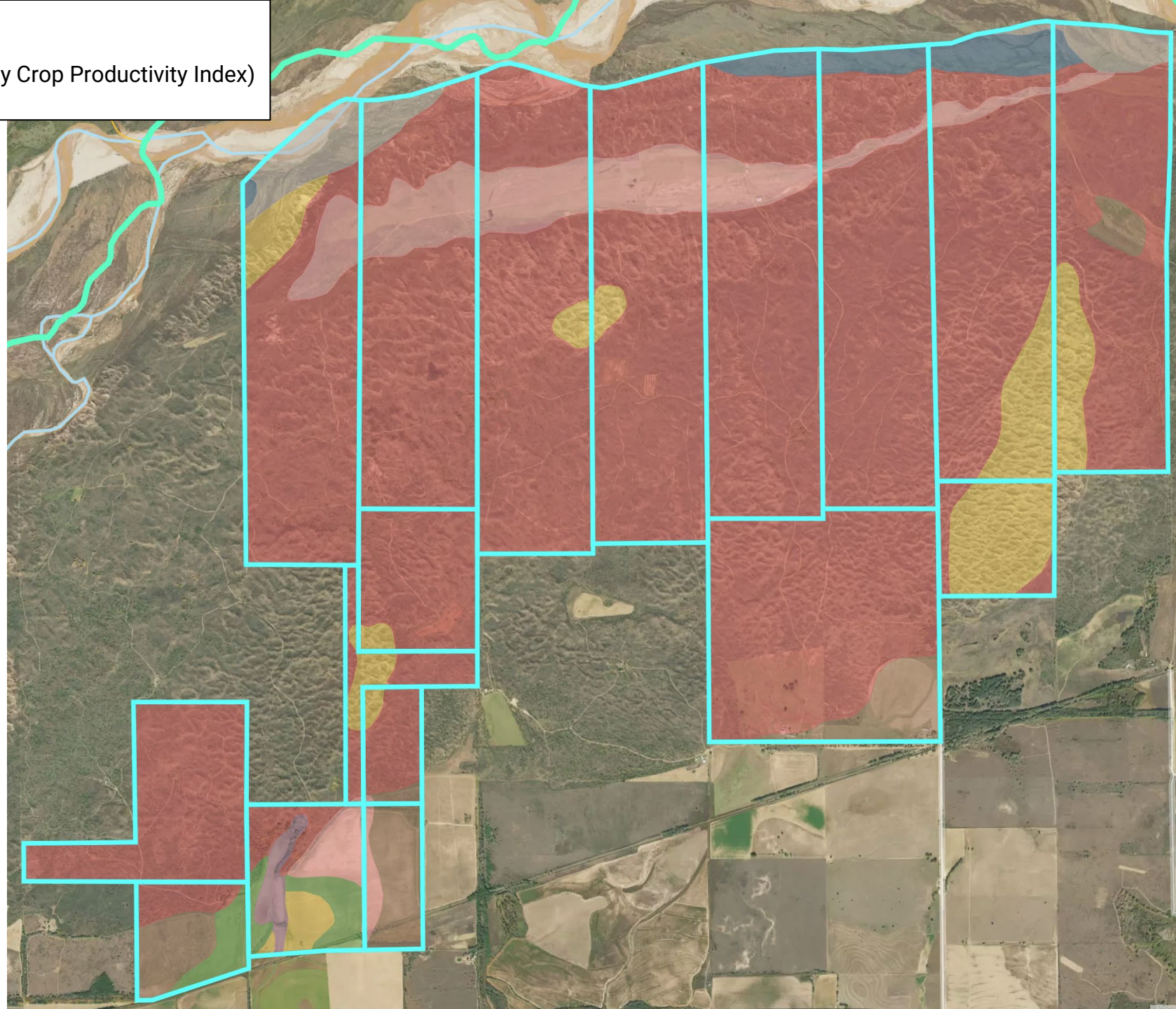
Slope

4.0 %

Min 0.0 %

Max 52.3 %

Soils
NCCPI
 (National Commodity Crop Productivity Index)
 Source: USDA



Soil Code	Soil Description	% of Field	Non-IRR Class	NCCPI Score
● Tv	Tivoli fine sand, 5 to 30 percent...	76.4	7e	20.9
● Ad	Active dunes	6.3	-	0
● Ly	Lincoln and Yahola soils	5.9	5w	33.9
● EfB	Hardeman fine sandy loam, dry, 1...	3.9	3e	41.4
● RW	Riverwash	2.4	-	0
● Sa	Lincoln loamy fine sand, dry, 0...	1.8	5w	15.9
● EmA	Enterprise very fine sandy loam,...	1.4	2e	41.2
● EfA	Hardeman fine sandy loam, dry, 0...	0.9	2e	41.7
● EmB	Enterprise very fine sandy loam,...	0.4	2e	40.8
● Ld	Spur loam, 0 to 1 percent slopes,...	0.3	5w	52.2
● EmC	Enterprise very fine sandy loam,...	0.2	3e	40.6