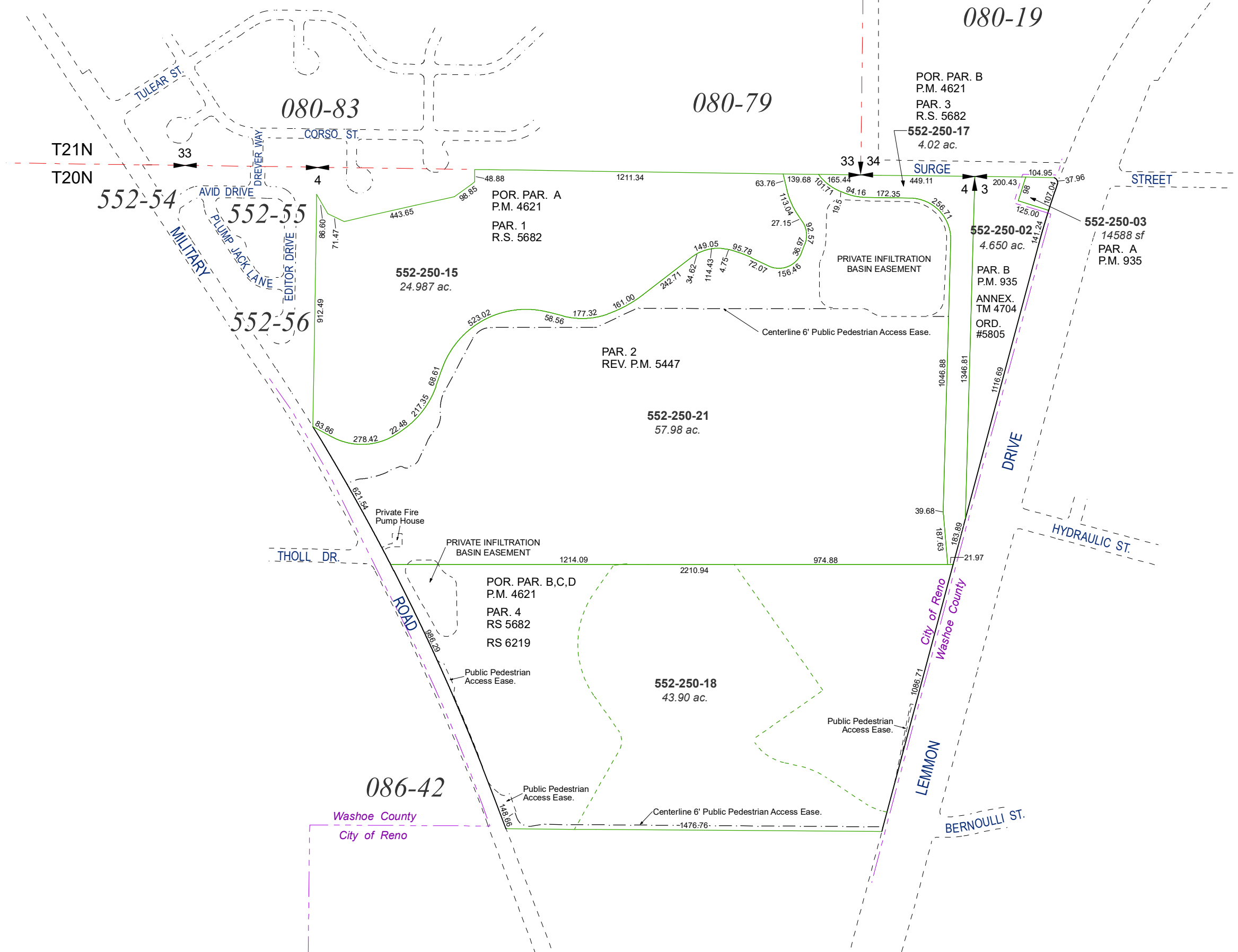
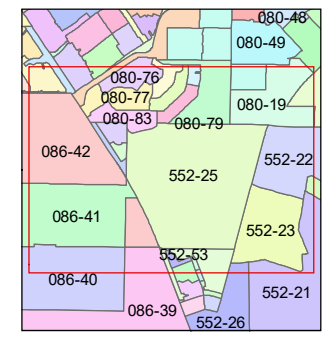
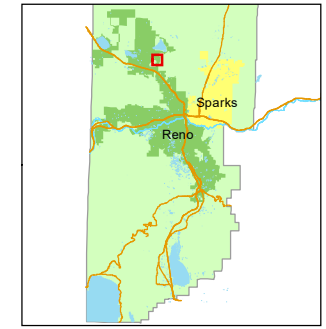
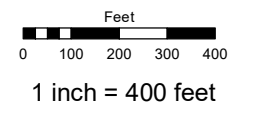


PORTION OF THE N 1/2 OF SECTIONS 3 & 4  
T20N - R19E



Assessor's Map Number  
**552-25**

STATE OF NEVADA  
**WASHOE COUNTY**  
ASSESSOR'S OFFICE  
1001 East Ninth Street, Building D  
Reno, Nevada 89512  
(775) 328-2231



created by: KSB 01/24/2011  
updated: JRA 10/21/22

area previously shown on map(s):  
080-79, 086-42, 552-26

NOTE: This map was prepared for the use of the Washoe County Assessor for assessment and illustrative purposes only. It does not represent a survey of the premises. No liability is assumed as to the sufficiency or accuracy of the data delineated hereon.