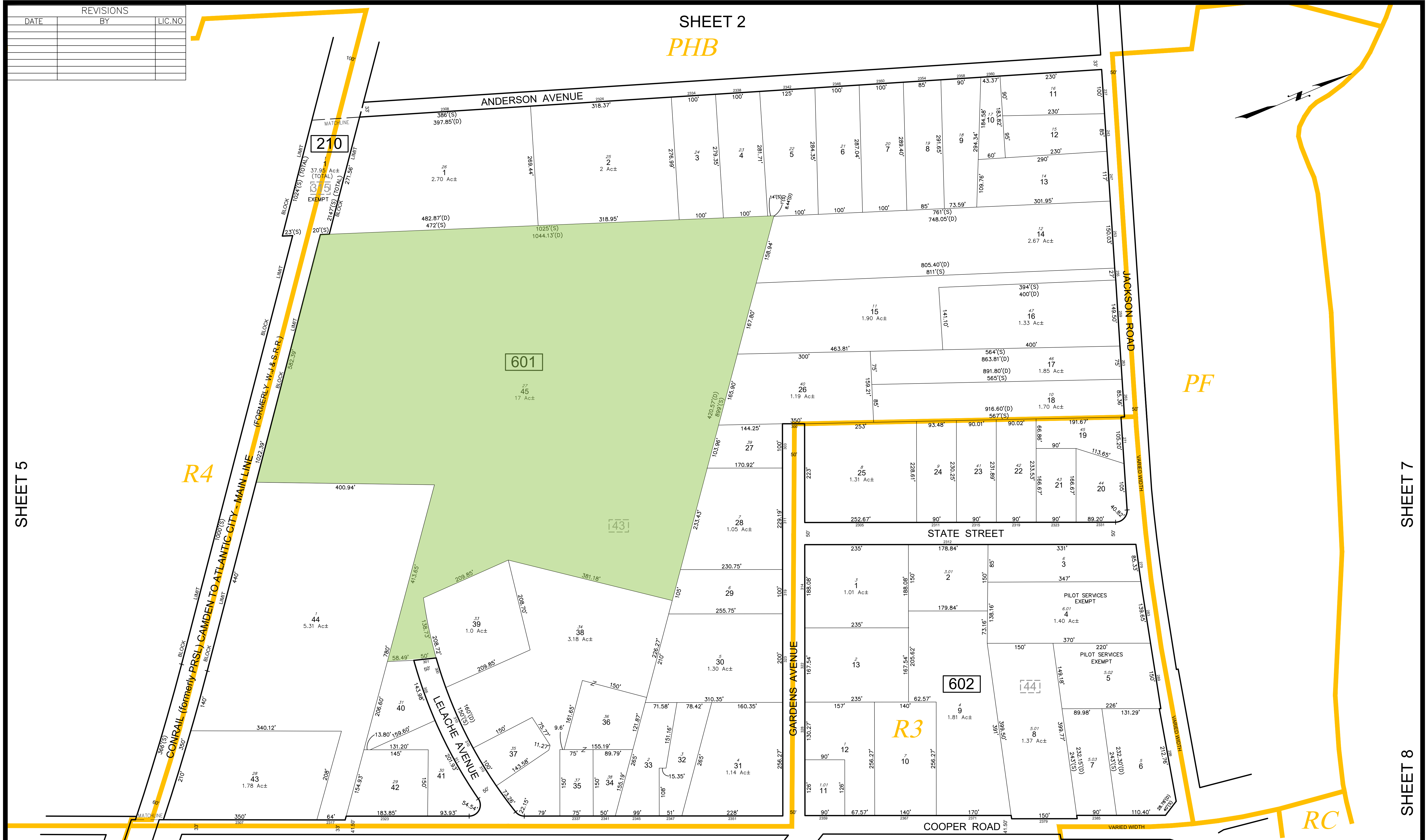


REVISIONS		
DATE	BY	LIC. NO.

SHEET 2  
PHB



SHEET 5

SHEET 10

SHEET 7

SHEET 8

SHEET 9

GARDENS AVENUE

THIS MAP WAS FORMALLY  
CERTIFIED BY THE  
DIVISION OF TAXATION ON  
SEPTEMBER 9, 2013, SIGNED  
BY SUE DAVISON, CTA AND  
ASSIGNED SERIAL NUMBER 1023

TAX MAP  
TOWNSHIP OF WATERFORD  
CAMDEN COUNTY NEW JERSEY  
SCALE: 1" = 100' DATE: DECEMBER 2012  
**CHARLES A. ATKINSON**  
LICENSED LAND SURVEYOR  
NEW JERSEY LICENSE NO. 33994  
850 SO. WHITE HORSE PIKE  
HAMMONTON, NEW JERSEY 08037  
COAF 24GA27973300  
TO SHOW CONDITIONS AS OF DECEMBER 2012

\* THIS SHEET HAS BEEN DRAWN USING COMPUTER AIDED DRAFTING/  
DESIGN (CAD/D) AND COORDINATE GEOMETRY (COCO).