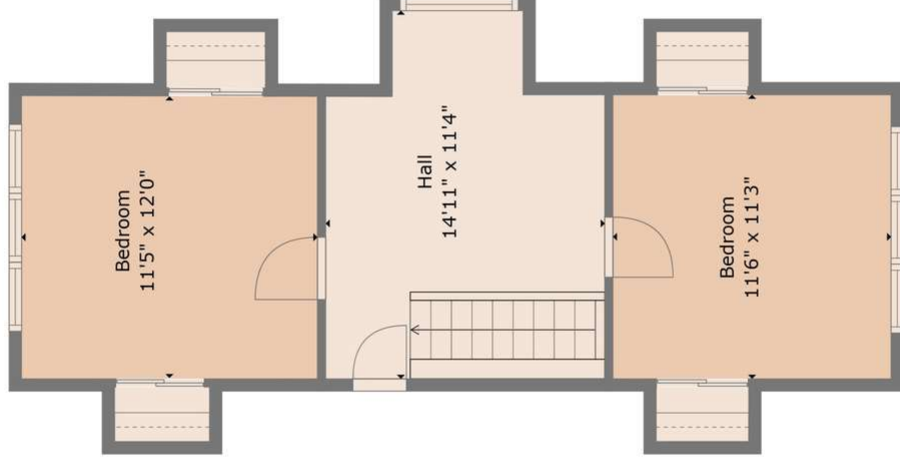




Floor 1



Floor 2

1730 Fontana Rd

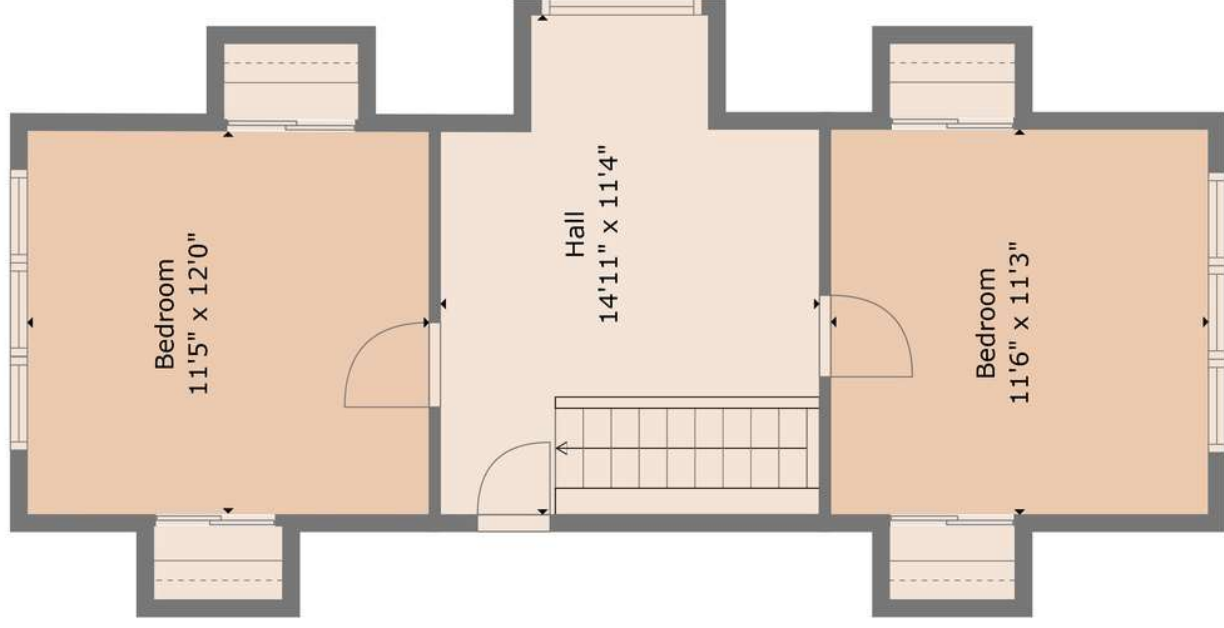
Bryson City, NC 28713

**TOTAL: 1467 sq. ft**

FLOOR 1: 1022 sq. ft, FLOOR 2: 445 sq. ft

EXCLUDED AREAS: COVERED DECK: 493 sq. ft, LOW CEILING: 18 sq. ft

FLOOR PLAN SIZES AND DIMENSIONS ARE APPROXIMATE. ACTUAL MAY VARY. INFORMATION DEEMED RELIABLE BUT NOT GUARANTEED. ALL NC BROKERS ARE ENCOURAGED (BY NCREC GUIDELINES) TO CONFIRM ALL MEASUREMENTS.



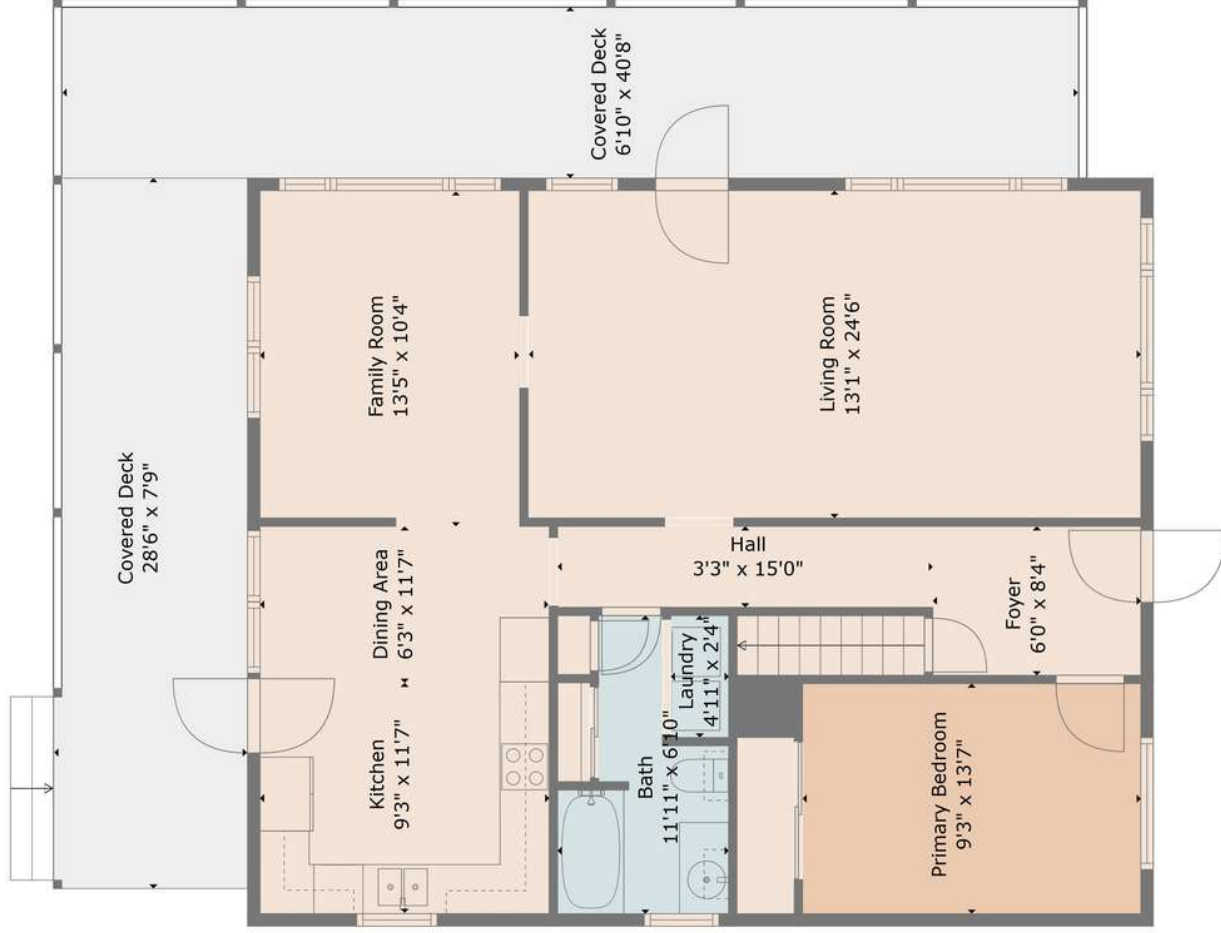
1730 Fontana Rd  
Bryson City, NC 28713

**TOTAL: 1467 sq. ft**

FLOOR 1: 1022 sq. ft, FLOOR 2: 445 sq. ft

EXCLUDED AREAS: COVERED DECK: 493 sq. ft, LOW CEILING: 18 sq. ft

FLOOR PLAN SIZES AND DIMENSIONS ARE APPROXIMATE. ACTUAL MAY VARY. INFORMATION DEEMED RELIABLE BUT NOT GUARANTEED. ALL NC BROKERS ARE ENCOURAGED (BY NCREC GUIDELINES) TO CONFIRM ALL MEASUREMENTS.



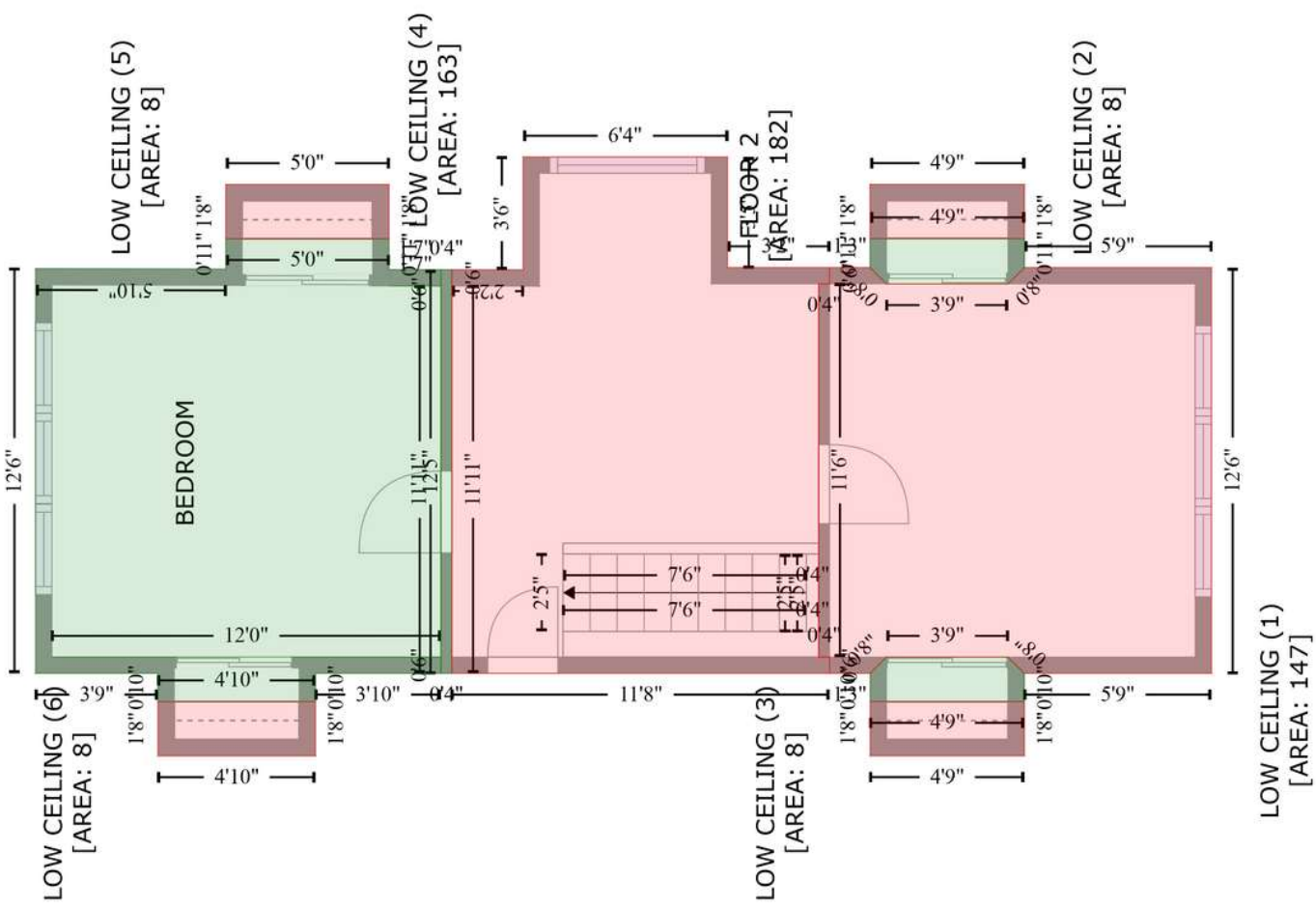
1730 Fontana Rd  
 Bryson City, NC 28713

**TOTAL: 1467 sq. ft**  
 FLOOR 1: 1022 sq. ft, FLOOR 2: 445 sq. ft  
 EXCLUDED AREAS: COVERED DECK: 493 sq. ft, LOW CEILING: 18 sq. ft

FLOOR PLAN SIZES AND DIMENSIONS ARE APPROXIMATE. ACTUAL MAY VARY. INFORMATION DEEMED RELIABLE BUT NOT GUARANTEED. ALL NC BROKERS ARE ENCOURAGED (BY NCREC GUIDELINES) TO CONFIRM ALL MEASUREMENTS.



1730 Fontana Rd  
Bryson City, NC 28713



1730 Fontana Rd  
 Bryson City, NC 28713