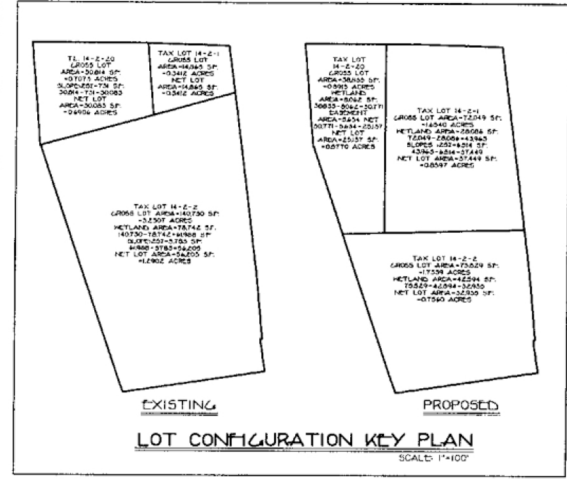


REFERENCE:

1. LISTED PLANS & LOTS MUST BE FILED IN THE ORANGE COUNTY CLERK'S OFFICE ON 1-15-03 AS MAP # 1-13-03.

SUBDIVISION OF LANDS BY SURVEYOR & ENGINEER MUST BE FILED IN THE ORANGE COUNTY CLERK'S OFFICE ON 1-15-03 AS MAP # 1-13-03.



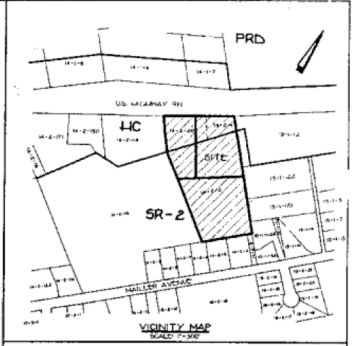
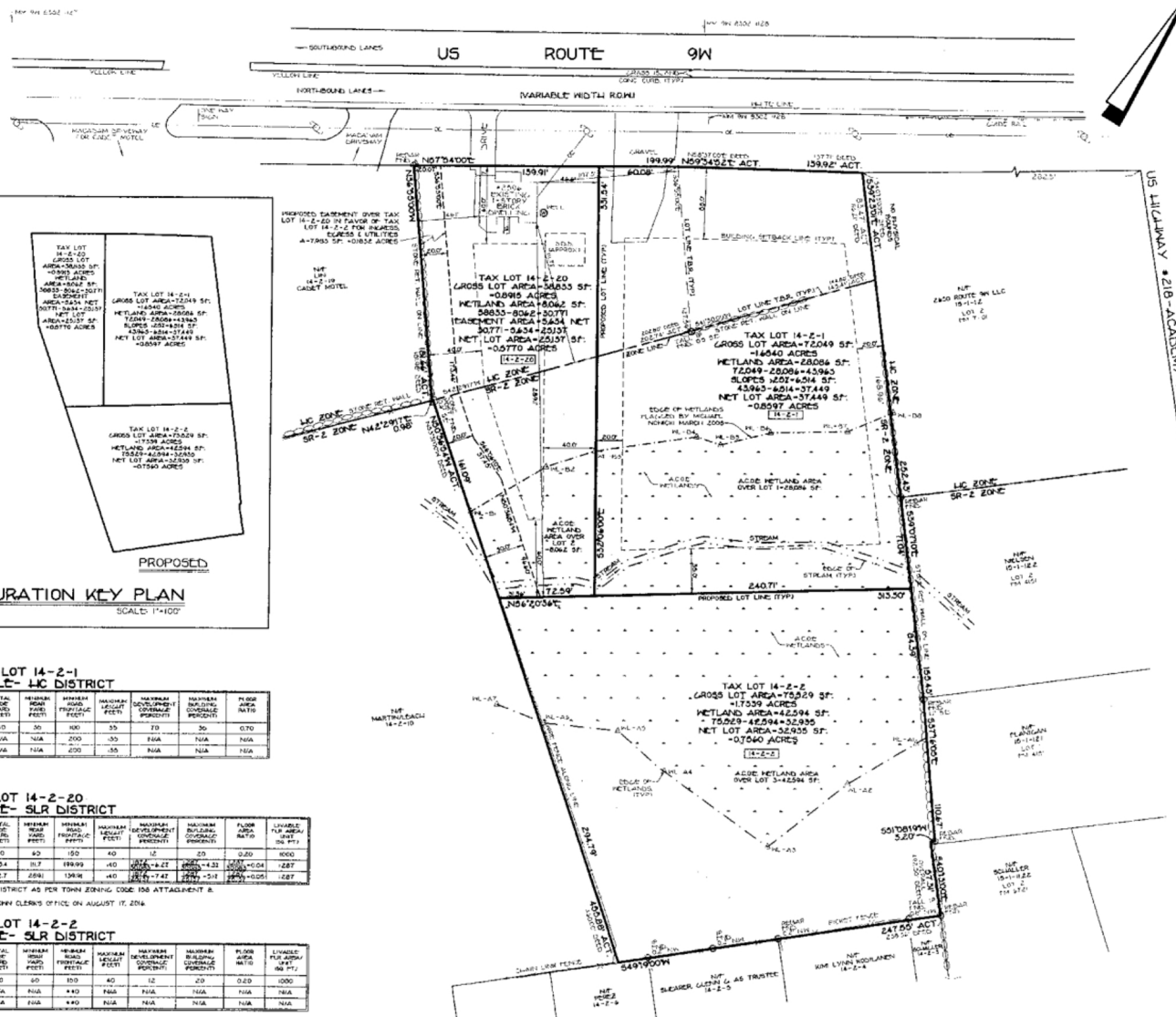
TAX LOT 14-2-1 BULK TABLE - LIC DISTRICT. Table with columns for ZONE, USE GROUP, REQUIRED, EXISTING, and PROPOSED. Includes a note: NOTE: VACANT LOT, NOT APPLICABLE (N/A).

TAX LOT 14-2-20 BULK TABLE - SLR DISTRICT. Table with columns for ZONE, SLR, USE GROUP, REQUIRED, EXISTING, and PROPOSED. Includes a note: NOTE: LOT 2 IS IN THE LIC DISTRICT USING BULK FOR SLR DISTRICT AS PER TOWN ZONING CODE 106 ATTACHMENT & DISTRICTING MAP CONFORMING CONDITION.

TAX LOT 14-2-2 BULK TABLE - SLR DISTRICT. Table with columns for ZONE, USE GROUP, REQUIRED, EXISTING, and PROPOSED. Includes a note: NOTE: VACANT LOT, NOT APPLICABLE (N/A).

ALL UTILITIES ARE SHOWN BY AN APPROXIMATE. THE CONTRACTOR SHALL CALL THE LOCAL UNDERGROUND UTILITIES COMPANY TO LOCATE ALL UTILITIES IN ANY CONSTRUCTION. CONTRACTORS SHALL ALSO VERIFY THE LOCATION, SIZE AND DEPTH OF ALL UTILITIES BEFORE ANY CONSTRUCTION. ANY SURFACE OF THE LANDS MAY NOT BE SHOWN ON THIS DRAWING.

IF THE SUBJECT PARCEL IS LOCATED IN A FLOOD HAZARD ZONE TO PER FEMA FLOOD INSURANCE RATE MAP TOWN OF CORNELL NUMBER 30488, PANEL 333 OF 400 MAP SHEET TO MAP NUMBER 30488-333-0000, PLEASE CONTACT THE DATE OF AUGUST 3, 2009.



- NOTES:
1. THIS IS A LOT LINE CHANGE MAP OF LOTS 1, 2 & 20 BLOCK 2 SECTION 14 AS SHOWN ON THE TOWN OF CORNELL TAX MAP.
2. TOTAL AREA OF TRACT 18441 SF = 4.2794 ACRES
3. ZONES: SR-2, LIC
4. NUMBER OF LOTS: 3
5. RECORD OWNER/APPLICANT: ANTHONY SMITH 2586 ROUTE 9W CORNELL, NEW YORK
6. FIRE DISTRICT: CANTERBURY FIRE DISTRICT
7. SCHOOL DISTRICT: CORNELL CENTRAL SCHOOL DISTRICT
8. WATER DISTRICT: CORNELL-ON-LEWISON WATER DEPT.
9. SEWER DISTRICT: CORNELL SEWER DEPARTMENT
10. DATUM: U.S.G.S.
11. ALL PROPERTY CORNERS SHALL BE MARKED WITH 3/4 INCH PIPE.
12. THE INDIVIDUAL LOTS ARE TO BE DESIGNATED WITH THE TAX LOT NUMBER SHOWN TABLES.

Map # 58-17 Sheet 1 of 1
Filed On 2/27/2017
ORANGE COUNTY CLERK'S OFFICE

REVISIONS
REV. 12-15-10 COMMENTS
REV. 11-14-08 COMMENTS
REV. 9-2-10 BULK NOTES
PLANNING BOARD
TOWN OF CORNELL
Preliminary & Final Approval
FEB 27 2017
Chris N. Egan

LOT LINE CHANGE MAP FOR SMITH LOCATED IN TOWN OF CORNELL, ORANGE COUNTY, NEW YORK

SPARACO & YOUNGBLOOD PLLC
CIVIL ENGINEERS & LAND SURVEYORS
SITE PLANNING
18 NORTH MAIN STREET
LEWISBURG, NY 13359
TEL: 518-834-7404
FAX: 518-834-7405
WWW.SPARACO.COM

28-17

28-17